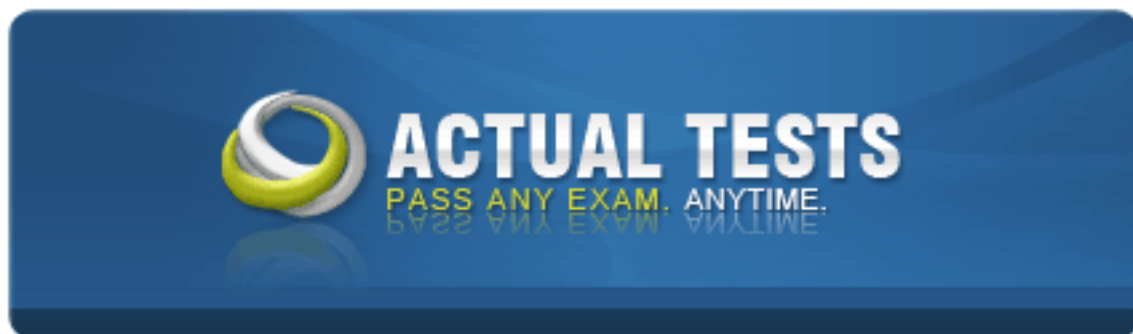


VMware VCP-510



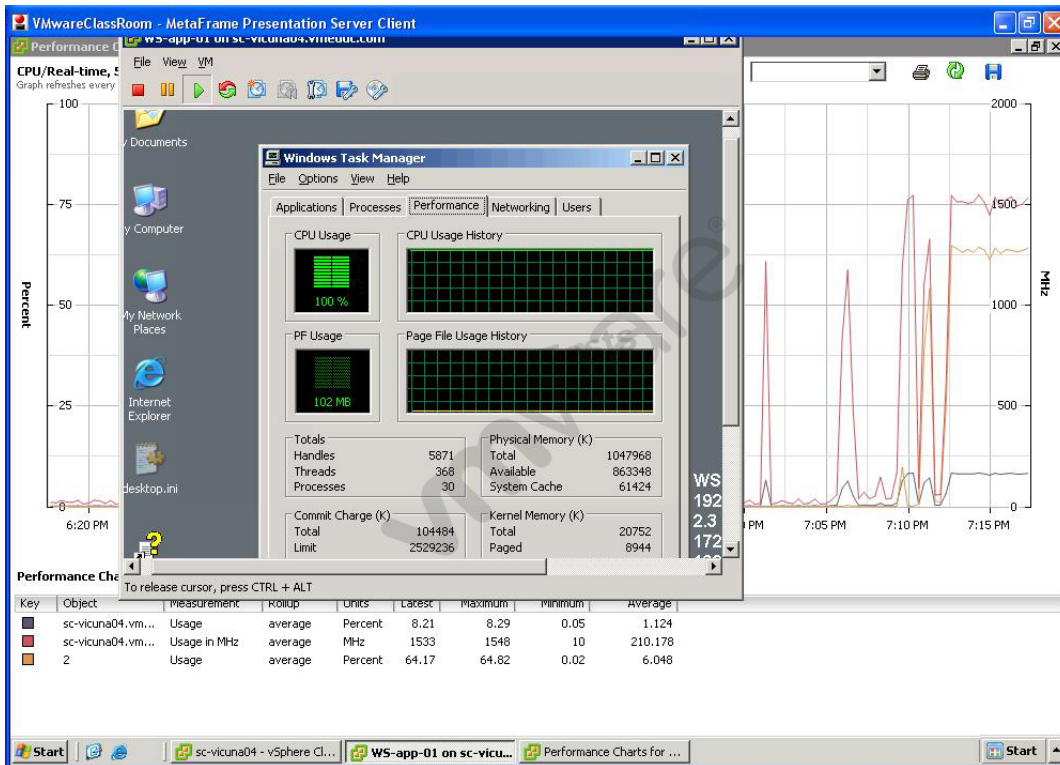
VMware Certified Professional on vSphere 5

Version: 13.1

Topic 1, Volume A

QUESTION NO: 1

Click the Exhibit button.



An administrator has deployed a new virtual machine on an ESXi 5.x host. Users are complaining of poor performance on the application running on the virtual machine.

Performance tools display the results shown in the exhibit.

Which two tasks might improve the user experience? (Choose two.)

- A. Add a vCPU to the virtual machine
- B. Remove CPU affinity on the advanced CPU setting of the virtual machine
- C. Migrate the virtual machine to another ESXi host
- D. Remove the limit on the CPU settings of the virtual machine

Answer: A,D

Explanation:

QUESTION NO: 2

An administrator notices that when a virtual machine is placed into a resource pool, a warning indicates that the virtual machine will receive a very large percentage of the total shares for memory. Which action can be taken to resolve this problem?

- A. Increase the memory resource allocation to the resource pool.
- B. Increase the share value for the resource pool.
- C. Change the shares setting from custom to high, medium, or low for the virtual machine.
- D. Decrease the memory allocation for the virtual machine.

Answer: C

Explanation:

The Memory Resources panel lets you allocate memory resources for a virtual machine and specify reservations, limits, and shares. Symbolic values Low, Normal, High, and Custom are compared to the sum of all shares of all virtual machines on the server and, on an ESX host, the service console.

By decreasing the memory share of a particular system, it receives less memory out of the total available memory.

QUESTION NO: 3

An administrator views the Fault Tolerance pane of the Summary tab of a virtual machine and finds that the current status is Not Protected.

What are two vSphere Fault Tolerance states that would cause the virtual machine to not be protected? (Choose two.)

- A. Stopped - Fault Tolerance has been stopped on the secondary virtual machine.
- B. Need Secondary VM - The primary virtual machine is running without a secondary virtual machine and is not protected
- C. Need Primary VM - The secondary virtual machine is running, and a new primary virtual machine cannot be generated.
- D. Disabled - Fault Tolerance is disabled.

Answer: B,D

Explanation:

Reason for Not Protected Status	Description
Starting	Fault Tolerance is in the process of starting the Secondary VM. This message is only visible for a short period of time.
Need Secondary VM [C above]	The Primary VM is running without a Secondary VM, so the Primary VM is currently not protected. This generally occurs when there is no compatible host in the cluster available for the Secondary VM. Correct this by bringing a compatible host online. If there is a compatible host online in the cluster, further investigation might be required. Under certain circumstances, disabling Fault Tolerance and then re-enabling it corrects this problem.
Disabled [A above]	Fault Tolerance is currently disabled (no Secondary VM is running). This happens when Fault Tolerance is disabled by the user or when vCenter Server disables Fault Tolerance after being unable to power on the Secondary VM.
VM not Running	Fault Tolerance is enabled but the virtual machine is powered off. Power on the virtual machine to reach Protected state.

Table 3-2
Reasons for Primary VM Not Protected Status

Part 3
Create and Configure Resource Pools (14 questions).

QUESTION NO: 4

Which two conditions prevent the application of a host profile to an ESXi 5.x host? (Choose two.)

- A. The host has multiple profiles attached.
- B. The host has not been placed into maintenance mode.
- C. The host is running virtual machines.
- D. The host is an ESXi host.

Answer: B,C

Explanation:

QUESTION NO: 5

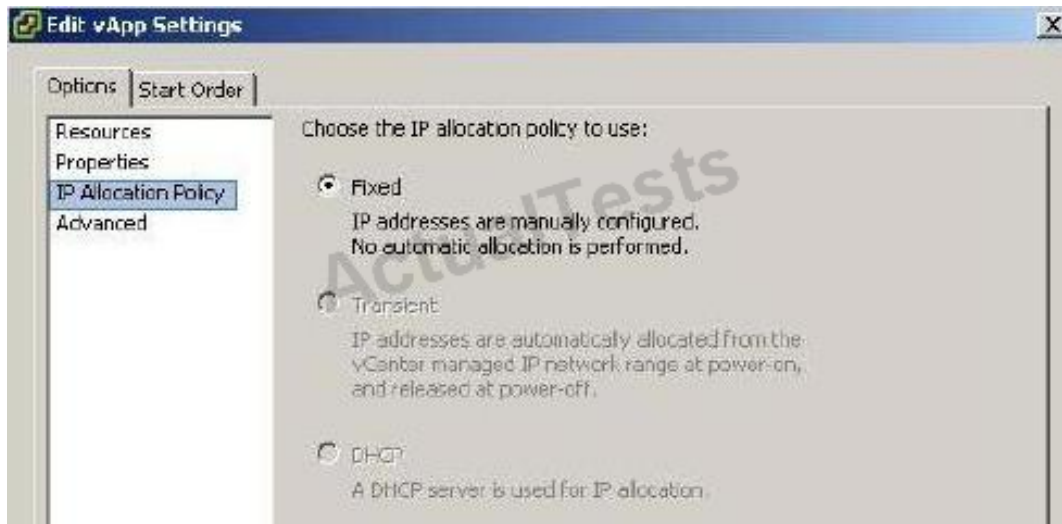
An administrator is editing the IP allocation policy for a vApp. Which three options are available? (Choose three.)

- A. Automatic
- B. Roaming
- C. Transient

- D. DHCP
- E. Fixed

Answer: C,D,E

Explanation:



QUESTION NO: 6

ACME Junkmail Incorporated has been utilizing templates in their environment. They are running a 10-node ESXi 5.x Cluster and DRS has not been configured. Several virtual machines have been deployed from this template and successfully powered on, but a newly deployed virtual machine will not power on. There appear to be adequate CPU and Memory resources available on the host.

Which three things can be done to allow more virtual machines to be deployed into the cluster from this template? (Choose three.)

- A. Select a different datastore for the virtual machine
- B. Move the swap file to a different location
- C. Deploy the virtual machine to a different host using the same datastore
- D. Enable DRS on the cluster to balance the virtual machine load out across hosts
- E. Increase the virtual machine memory reservation

Answer: A,B,E

Explanation:

If you make reservations for your virtual machine's that are equal to the amount of RAM assigned to them, swapping and page sharing does not occur. You can over commit pretty heavily if you are comfortable with poorer performance. If you do not set reservations, ESX host creates a .vswp file

equal to the difference between the amount of physical memory assigned to the virtual machine and the reservation it has. By default, memory reservations are set to 0. If you have a virtual machine with 2GB of memory without a reservation, it creates a 2GB .vswp file when it is powered on. The virtual machine starts using the .vswp file if the server is out of physical RAM. If you set a 1GB reservation, it creates a 1GB .vswp file. The .vswp files are what allows for memory overcommitment.

QUESTION NO: 7

What are three valid objects to place in a vApp? (Choose three.)

- A. Folders
- B. Hosts
- C. Resource pools
- D. vApps
- E. Virtual machines

Answer: C,D,E

Explanation:

Create an Object Inside the vApp in the vSphere Client

Within a vApp, you can create a new virtual machine, resource pool, or another vApp.

Procedure

- 1 In the inventory, select the vApp in which you want to create the object machine.
- 2 Select the menu option to create a specific object.

Menu Option	Description
Inventory > vApp > New Virtual Machine	Creates a new virtual machine inside the vApp. Complete the Create New Virtual Machine wizard. See Creating a Virtual Machine in the vSphere Client for instructions on creating a new virtual machine.
Inventory > vApp > New Resource Pool	Adds a resource pool inside the vApp. Complete the Create Resource Pool window.
Inventory > vApp > New vApp	Creates a new vApp inside the currently selected vApp. Complete the New vApp wizard. See Create a vApp in the vSphere Client for instructions on creating a new vApp.

http://pubs.vmware.com/vsphere-50/index.jsp?topic=/com.vmware.vsphere.vcenterhost.doc_50/GUID-3B5AF2B1-C534-4426-B97A-D14019A8010F.html

QUESTION NO: 8

Which three Storage I/O Control conditions might trigger the Non-VI workload detected on the datastore alarm? (Choose three.)

- A. The datastore is connected to an ESX/ESXi 4.0 host that does not support Storage I/O Control.
- B. The datastore is on an array that is performing system tasks such as replication.
- C. The datastore is utilizing active/passive multipathing or NMP (Native Multi-Pathing).
- D. The datastore is storing virtual machines with one or more snapshots.
- E. The datastore is connected to an ESX/ESXi 4.0 host that is not managed by vCenter.

Answer: A,B,E

Explanation:

http://kb.vmware.com/selfservice/microsites/search.do?language=en_US&cmd=displayKC&externallid=1020651

http://pubs.vmware.com/vsphere-50/topic/com.vmware.vsphere.troubleshooting.doc_50/GUID-38F95285-DB4F-462F-AFD7-0F4D812B085F.html

QUESTION NO: 9

An administrator has just finished deploying a vApp for a web service. What three options are available to the administrator for IP allocation within the vApp? (Choose three.)

- A. Transient
- B. Fixed
- C. DHCP
- D. Bridged
- E. NAT

Answer: A,B,C

Explanation:

Option Description

Option	Description
Fixed	IP addresses are manually configured. No automatic allocation is performed.
Transient	IP addresses are automatically allocated using IP pools from a specified range when the vApp is powered on. The IP addresses are released when the appliance is powered off.
DHCP	A DHCP server is used to allocate the IP addresses. The addresses assigned by the DHCP server are visible in the OVF environments of virtual machines started in the vApp.

QUESTION NO: 10

An administrator is working to implement Storage Profiles in their environment.

Which two ways can storage capabilities be generated? (Choose two.)

- A. They are generated by Datastore Clusters as LUNs are added to the cluster.
- B. They are automatically determined by the Storage Profile when it is created.
- C. They can be retrieved from the array through the VMware APIs for Storage Awareness (VASA).
- D. They can be manually generated by the administrator.

Answer: C,D

Explanation:

Understanding Storage Capabilities

A storage capability outlines the quality of service that a storage system can deliver. It is a guarantee that the storage system can provide a specific set of characteristics for capacity, performance, availability, redundancy, and so on.

If a storage system uses Storage APIs – Storage Awareness, it informs vCenter Server that it can guarantee a specific set of storage features by presenting them as a storage capability. vCenter Server recognizes the capability and adds it to the list of storage capabilities in the Manage Storage Capabilities dialog box. Such storage capabilities are system-defined. vCenter Server assigns the system-defined storage capability to each datastore that you create from that storage system.

NOTE:

Because multiple system capabilities for a datastore are not supported, a datastore that spans several extents assumes the system capability of only one of its extents.

You can create user-defined storage capabilities and associate them with datastores. You should associate the same user-defined capability with datastores that guarantee the same level of storage capabilities. You can associate a user-defined capability with a datastore that already has a system-defined capability. A datastore can have only one system-defined and only one user-

defined capability at a time.

QUESTION NO: 11

Which VMware solution uses the security of a vSphere implementation and provides linked-clone technology to virtual desktops?

- A. VMware ACE
- B. VMware View
- C. VMware Workstation
- D. VMware ThinApp

Answer: B

Explanation:

Reference: <http://www.vmware.com/files/pdf/VMware-View-4-Composer-DS-EN.pdf> (page 1, last paragraph)

QUESTION NO: 12

Which two conditions will prevent a virtual machine from being successfully migrated using Storage vMotion? (Choose two.)

- A. The virtual machine has an RDM.
- B. The virtual machine has Fault Tolerance enabled.
- C. The virtual machine is running on a vSphere 5.x Standard host.
- D. The virtual machine has a disk stored on an NFS datastore.

Answer: B,C

Explanation:

QUESTION NO: 13

Under which two conditions can vStorage APIs for Array Integration (VAAI) provide a performance benefit? (Choose two.)

- A. When a virtual disk has VMDK files stored on an NFS datastore.

- B. When a virtual disk is created using the New Virtual Machine wizard.
- C. When cloning a virtual machine with snapshots.
- D. When a virtual disk is deleted.

Answer: A,D

Explanation:

QUESTION NO: 14

An administrator is enabling Enhanced vMotion Compatibility (EVC) in a DRS cluster. The administrator wants only hosts with the newest Intel processors added to the cluster.

Which setting satisfies this requirement?

- A. The baseline with the most CPUs listed
- B. The baseline with the fewest CPUs listed
- C. Any baseline that contains Future Intel processors
- D. Create a new baseline and add only the latest processor family

Answer: D

Reference: <http://www.virtualizationadmin.com/articles-tutorials/vmware-esx-and-vsphere-articles/vmotion-drs-high-availability/enhanced-vmotion-compatibility-primer.html> (8th para)

QUESTION NO: 15

Which two conditions must exist on all hosts in the cluster if Enhanced vMotion Compatibility (EVC) is used? (Choose two.)

- A. The cluster must be enabled for DRS.
- B. All hosts in the cluster must be running ESX/ESXi 3.5 Update 2 or later.
- C. All hosts in the cluster must have hardware virtualization support enabled.
- D. The cluster must be enabled for HA.

Answer: B,C

Explanation:

QUESTION NO: 16

Users are experiencing performance issues when updating their database hosted on a virtual machine. The administrator determines that disk I/O is high across one of the HBAs on the ESXi host containing the virtual machine.

What is the action will most likely correct the issue without significantly impacting other users or datastores?

- A. Manually configure the disk multipathing policy to Round Robin for the datastore
- B. Migrate the virtual machine to an NFS datastore using Storage vMotion
- C. Use Storage vMotion to migrate the virtual machine to a new VMFS5 datastore
- D. Map additional LUNs to the ESXi host and extend the datastores

Answer: A

Explanation:

QUESTION NO: 17

An administrator takes a vSphere snapshot of a virtual machine and applies an OS update. After confirming the update the administrator cannot enable Fault Tolerance on the virtual machine and suspects there are snapshots that have not been consolidated.

Which two operations can the administrator perform to verify consolidation is needed? (Choose two.)

- A. Expose the Needs Consolidation column in the virtual machines tab of the host.
- B. Browse the datastore containing the vmdk files and look for files with the "-delta.vmdk" extension.
- C. Expose the Needs Consolidation column in the virtual machine summary tab.
- D. Select and run the vSphere Cluster HealthCheck from the right-click menu of the cluster object.

Answer: A,B

Explanation:

QUESTION NO: 18

An administrator has created a virtual machine that will be accessed from a public kiosk. Management has requested that the virtual machine be reset to a known state once a week or on demand if requested.

Which method is the simplest way to meet this requirement?

- A. Configure the storage array to be vSphere aware and script routine array snapshot restores of the datastore.
- B. Implement a 3rd party imaging server and PXE boot the virtual machine off a static image.
- C. Set the VMDKs of the virtual machine to be Independent-Nonpersistent and schedule restarts of the virtual machine.
- D. Create Nonpersistent disks for the virtual machine and set the guest OS to reboot once a week.

Answer: C

Explanation:

QUESTION NO: 19

What are three true statements about quiescing virtual machine snapshots? (Choose three.)

- A. vSphere snapshot quiescing only occurs on Windows guest OSes.
- B. The quiescing operation is automatic with any snapshot.
- C. The quiescing operation varies by guest OS.
- D. Quiescing should occur before array-based snapshots to ensure consistency.
- E. VMware Tools is required for quiescing to be successful.

Answer: C,D,E

Explanation:

QUESTION NO: 20

An administrator has deployed vCenter Data Recovery and wants the largest possible de-duplication store. Which three storage options can be used? (Choose three.)

- A. Two CIFS shares
- B. Two RDMs on a FCP array
- C. One NFS mount on the ESXi host and one RDMs on an iSCSI array
- D. One CIFS share and one FCP RDM
- E. Two NFS mounts on the ESXi host

Answer: B,C,E

Explanation:

QUESTION NO: 21

An administrator has recently upgraded their Update Manager infrastructure to vSphere 5.x. Several hosts and virtual machines have not been upgraded yet.

Which vSphere component when upgraded will have the least impact to the existing environment?

- A. Virtual Machine Hardware
- B. ESX Hosts
- C. VMFS datastores
- D. VMware Tools

Answer: D

Explanation:

QUESTION NO: 22

An administrator is using Update Manager 5.x to update virtual appliances in a vSphere environment. The environment is using the vCenter Server Virtual Appliance (vCSA).

What would cause the remediation to fail?

- A. Updating of the appliance can only be done if the vCenter Server Virtual Appliance (vCSA) has been put into Maintenance Mode.
- B. Remediation must be configured on the Appliance Administration page before use.
- C. Remediation of the vCenter Server Virtual Appliance (vCSA) with Update Manager is not supported.
- D. Remediation requires the hosts to be connected to vCenter using an IPv4 address.

Answer: C

Explanation:

QUESTION NO: 23

An administrator is working to update the hosts and virtual machines in a vSphere 5.x deployment using Update Manager Baselines. Other than host patches, which three items require a separate procedure or process to update? (Choose three.)

- A. Operating system patches
- B. Virtual Appliance updates

- C. Virtual Machine Virtual Hardware upgrades
- D. VMware Tools on machines without VMware Tools already installed
- E. Application patches within the virtual machine

Answer: A,D,E

Explanation:

QUESTION NO: 24

An administrator selects the Profile Compliance tab of a vSphere cluster, then selects Check Compliance Now. Which features requirements are not checked by this?

- A. vMotion
- B. Fault Tolerance
- C. DRS
- D. Host Profiles

Answer: D

Explanation:

QUESTION NO: 25

An administrator is troubleshooting an ESXi 5.x host and needs to export diagnostic information. The host is currently managed by a vCenter Server instance.

Which two ways can the information be gathered using the vSphere Client? (Choose two.)

- A. Select Home. Under Administration, click System Logs and click the Export System Logs button. Select the affected ESXi host. Select Select All. Select a location and click Finish.
- B. In the vSphere Client, select the affected ESXi host. Right-click the host and select Export Diagnostic Data. Select a location and click OK.
- C. Log in to the ESXi host locally, Select Export System Logs.
- D. In the vSphere Client, select the affected ESXi host. Select File, Export and Export System Logs. Select Select All. Select a location and click Finish.

Answer: A,D

Explanation:

QUESTION NO: 26

An ESXi 5.x host displays a warning icon in the vSphere console and its summary page lists a configuration issue "SSH for the host has been enabled." What are two ways to clear this warning? (Choose two.)

- A. Using the Security Profile pane of the Configuration tab in the vSphere Client
- B. Using the Direct Console User Interface (DCUI)
- C. Using the Advanced Settings pane of the Configuration tab in the vSphere Client
- D. Using the Networking pane of the Configuration tab in the vSphere Client

Answer: A,B

Explanation:

QUESTION NO: 27

vCenter reports a connectivity problem with a ESXi 5.x host that is not a member of a cluster. An administrator attempts to connect directly to the host using the vSphere Client but fails with the message "An unknown connection error occurred." Virtual machines running on the host appear to be running and report no problem.

What two methods would likely resolve the issue without affecting the virtual machines? (Choose two.)

- A. Enter the service mgmt-vmware restart command from either SSH or local CLI
- B. Select Restart Management Agents in the Direct Console User Interface (DCUI)
- C. Select Reboot Host in the Direct Console User Interface (DCUI)
- D. Enter the services.sh restart command from either SSH or the local CLI

Answer: B,D

Explanation:

QUESTION NO: 28

Click the Exhibit button.

```

3:58:20pm up 15:52, 300 worlds, 7 VMs, 14 vCPUs; CPU load average: 1.07, 1.10, 1.09
PCPU USED(%): 94 94 93 93 92 86 90 89 AVG: 91
PCPU UTIL(%): 93 93 93 93 93 87 89 89 AVG: 91

```

ID	GID	LWID	NAME	NWLD	%USED	%RUN	%SYS	%WAIT	%VMWAIT	%RDY	%IDLE	%OVRLP	%CSTP	%MLMTD	%SMPWT
30172	30172	40901	dsaojose-vm50	5	0.58	0.52	0.06	497.01	0.15	3.63	96.71	0.01	0.00	0.00	0.00
31109	31109	42222	Dev_App_01	5	60.98	60.30	0.04	395.71	0.00	44.19	0.00	0.08	0.00	0.00	0.00
31112	31112	42228	Dev_SQL_01	5	62.93	63.58	0.02	398.20	0.00	38.52	0.00	0.08	0.00	0.00	0.00
31115	31115	42234	Dev_Web_01	5	67.16	66.76	0.02	398.02	0.00	35.66	0.00	0.10	0.00	0.00	0.00
31275	31275	42457	FileServer01	12	470.63	471.52	0.05	608.00	210.90	113.49	0.00	1.00	9.28	0.00	0.74
31281	31281	42491	jonathanm-SQL20	5	1.83	1.79	0.05	495.49	0.00	3.86	95.39	0.01	0.00	0.00	0.00
31886	31886	43286	victim-001	5	60.60	60.34	0.01	393.30	0.00	46.82	0.00	0.08	0.00	0.00	0.00

ACME Catering Services is using esxtop to troubleshoot a performance problem with one of their ESXi 5.x hosts. Host disconnections from vCenter Server as well as sluggish performance when performing tasks on the host have been observed. Based on the output in the exhibit, how many vCPU's have been assigned to FileServer01?

- A. 1
- B. 2
- C. 4
- D. 8

Answer: D

Explanation:

QUESTION NO: 29

An administrator notices that log files kept on an ESXi 5.x host are being rotated very quickly, inhibiting the troubleshooting of an issue. Which two configuration changes will resolve the issue? (Choose two.)

- A. Configure syslog to send the logs a syslog server
- B. Increase the number of logs kept
- C. Increase the logging level
- D. Increase the size of the partition where log files are stored

Answer: A,B

Explanation:

QUESTION NO: 30

A series of Auto Deploy ESXi 5.x hosts which utilize vSphere Standard Switches are unable to boot. In prior testing, all of the hosts were able to boot successfully.

Which two conditions might cause this issue? (Choose two.)

- A. The Hosts are unable to connect to the SAN.
- B. The TFTP server is down.
- C. The DNS server is down.
- D. The DHCP server is down.

Answer: B,D

Explanation:

QUESTION NO: 31

An administrator wants to monitor the health status of an ESXi 5.x host. However, when the administrator clicks the Hardware Status tab the following error is displayed.

This program cannot display the webpage

What might cause this problem?

- A. The VMware VirtualCenter Management Webservices Service is not started.
- B. The required plug-in is not enabled.
- C. The VMware ESXi Management Webservices Service is not started
- D. The name of the vCenter Server system could not be resolved.

Answer: A

Explanation:

QUESTION NO: 32

An iSCSI array is being added to a vSphere 5.x implementation. An administrator wants to verify that all IP storage VMkernel interfaces are configured for jumbo frames.

What are two methods to verify this configuration? (Choose two.)

- A. Run the `esxcli network ip interface list` command
- B. Run the `esxcfg-vswif -l` command
- C. Ensure that the Enable Jumbo Frames box is checked in the VMkernel interface properties in the vSphere client
- D. Ensure that the MTU size is set correctly in the VMkernel interface properties in the vSphere client

Answer: A,D

Explanation:

QUESTION NO: 33

An administrator has configured a vSphere Distributed Switch to send all network traffic to a collector virtual machine for analysis. However, after checking the collector virtual machine several hours later the administrator finds that no data has been collected. vSphere 5.x has been deployed in the datacenter.

Which two items below could be causing this issue? (Choose two.)

- A. The source virtual machine does not have Promiscuous Mode enabled.
- B. The source and target virtual machines are not both be on the same vSphere Distributed Switch.
- C. The port group or distributed does not have Promiscuous Mode enabled.
- D. The port group or distributed port does not have NetFlow enabled.

Answer: B,D

Explanation:

QUESTION NO: 34

A vSphere 5 implementation consists of a fully automated DRS cluster with two ESXi 5.x hosts with the following vSphere Standard Switch configuration.

1. Switch A. three vmnics, one port group named sFTP-PG
2. Switch B. two vmnic, one port group named Web-PG
3. All vmnics are trunked to the same physical switch.

DRS has been configured with an anti-affinity rule for all virtual machines in the Web-PG so that no more than half of the virtual machines run on any given host. The virtual machines on WebPG are experiencing significant network latency. The network team has determined that a performance bottleneck is occurring at the ESXi host level.

Which solution will require the least amount of administrative work and the least amount of service interruption?

- A. Migrate Web-PG to Switch A and sFTP-PG to Switch B on each host

- B. Move a vmnic from Switch A to Switch B on each host
- C. Convert the three Switch Bs to a single vSphere Distributed Switch
- D. Use vMotion to redistribute some of the VMs in Web-PG to a different ESXi host

Answer: B

Explanation:

QUESTION NO: 35

A user attempts a remote SSH connection to a newly-installed ESXi 5.x host to execute some commands. The SSH connection attempt fails, though the user is able to receive a ICMP ping back from the host. What must the administrator do to enable SSH? (Choose two.)

- A. Enable root logon on the ESXi server.
- B. Open the SSH port on the ESXi firewall.
- C. Start the SSH service on the ESXi server.
- D. Create a local user on the ESXi server.

Answer: B,C

Explanation:

QUESTION NO: 36

An administrator is setting up vMotion in a vSphere environment. A migration is run to test the configuration, but fails.

What could the administrator do to resolve the issue?

- A. Ensure the VMkernel port group is configured for Management Traffic.
- B. Enable VMkernel port group for the vSphere cluster.
- C. Ensure the vMotion enabled adaptors configured for the same subnet.
- D. Use a vDS instead of a standard switch.

Answer: C

Explanation:

QUESTION NO: 37

An administrator is unable to connect a vSphere Client to an ESXi 5.x host.

Which option can be selected from the direct console to restore connectivity without disrupting running virtual machines?

- A. Restore the Standard Switch from the ESXi host.
- B. Restart the Management Agents from the vSphere client.
- C. Restart the Management Agent from the ESXi host
- D. Disable the Management Network from the vSphere client.

Answer: C

Explanation:

QUESTION NO: 38

An administrator receives a complaint that a virtual machine is performing poorly. The user attributes the issue to poor storage performance. If the storage array is the bottleneck, which two counters would be higher than normal? (Choose two.)

- A. Average ESXi VMKernel latency per command, in milliseconds
- B. Average ESXi highest latency, in milliseconds
- C. Average virtual machine operating system latency per command, in milliseconds
- D. Number of SCSI reservation conflicts per second

Answer: B,C

Explanation:

QUESTION NO: 39

An administrator must decommission a datastore.

Before unmounting the datastore, which three requirements must be fulfilled? (Choose three.)

- A. No virtual machines reside on the datastore.
- B. The datastore is not used for vSphere HA heartbeat.
- C. No registered virtual machines reside on the datastore.
- D. The datastore must not have any extents.
- E. The datastore must not be part of a datastore cluster.

Answer: A,B,E

Explanation:

Unmount VMFS or NFS Datastores

When you unmount a datastore, it remains intact, but can no longer be seen from the hosts that you specify. The datastore continues to appear on other hosts, where it remains mounted.

Do not perform any configuration operations that might result in I/O to the datastore while the unmount is in progress.

Note vSphere HA heartbeating does not prevent you from unmounting the datastore. If a datastore is used for heartbeating, unmounting it might cause the host to fail and restart any active virtual machine. If the heartbeating check fails, the vSphere Client displays a warning.

Prerequisites

Before unmounting VMFS datastores, make sure that the following prerequisites are met:

- No virtual machines reside on the datastore.
- The datastore is not part of a datastore cluster.
- The datastore is not managed by Storage DRS.
- Storage I/O control is disabled for this datastore.
- The datastore is not used for vSphere HA heartbeating.

QUESTION NO: 40

An administrator is informed that there will be a storage maintenance window and that failovers may occur.

What is the expected length of time that a Windows 2008 virtual machine storage I/O will pause during a path failover?

- A. 0 to 30 seconds
- B. 90 to 120 seconds
- C. 60 to 90 seconds
- D. 30 to 60 seconds

Answer: D

Explanation:

QUESTION NO: 41

A company wants to increase disk capacity for their vSphere environment Management mandates that:

1. vMotion must work in this environment.
2. The existing LAN infrastructure must be used.

Which storage option best meets the company objectives?

- A. iSCSI
- B. Fibre Channel
- C. SATA
- D. NFS

Answer: D

Explanation:

QUESTION NO: 42

Which resource management technique can be used to relieve a network bottleneck caused by a virtual machine with occasional high outbound network activity?

- A. Convert the switch from a vSphere Standard Switch to a vSphere Distributed Switch.
- B. Create a new portgroup for the virtual machine and enable traffic shaping.
- C. Apply traffic shaping to the other virtual machines in the same port group.
- D. Apply traffic shaping to the virtual machine with high activity.

Answer: B

Explanation:

QUESTION NO: 43

An administrator has determined that storage performance to a group of virtual machines is reduced during peak activity. The virtual machines are located in a VMFS datastore called Production1 on an active-active storage array. The ESXi 5.x host running the virtual machines is configured with an MRU multipathing policy.

Which two actions can be taken to improve the storage performance of these virtual machines? (Choose two.)

- A. Add virtual storage, create a VMFS datastore called Production2 on the new storage, and then migrate some of the virtual machines from Production1 to Production2.
- B. Change the storage multipathing policy to Round Robin.
- C. Add physical storage, create a VMFS datastore called Production2 on the new storage, and then migrate some of the virtual machines from Production1 to Production2.
- D. Change the storage multipathing policy to Fixed with default settings.

Answer: B,C

Explanation:

QUESTION NO: 44

Which of these factors indicates a high likelihood that the performance of a virtual machine disk is being constrained by disk I/O?

- A. A large number of commands issued
- B. A high device latency value
- C. A high disk used value
- D. A large number of kilobytes read and written

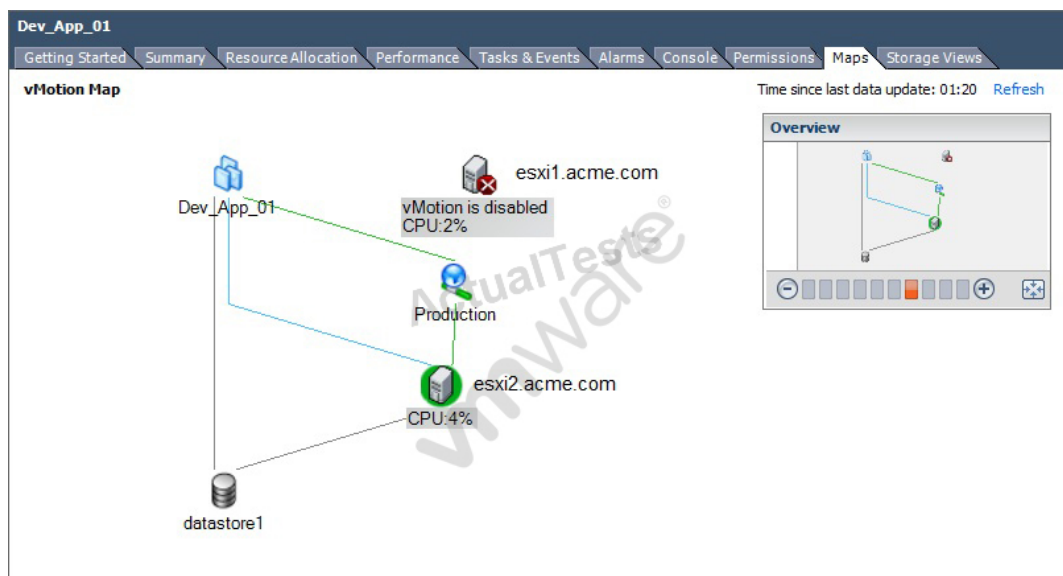
Answer: B

Explanation:

Disk performance bottlenecks are usually due to either Disk queue length or Disk Latency

QUESTION NO: 45

Click the Exhibit button.



An administrator is configuring vMotion in their environment. As part of the implementation, an administrator is examining resource mapping for virtual machines.

What is a likely cause of the error shown in the exhibit?

- A. vMotion has been disabled because there are no other hosts in the cluster with vMotion enabled.
- B. vMotion has not been enabled on the Production port group.
- C. The administrator has not created a Management network.
- D. vMotion has not been enabled on a VMkernel port group.

Answer: D

Explanation: This only shows up in the Maps when the vmotion OPTION is not checked in the PORT group – hence vMotion is DISABLED!

Other Notes: vMotion doesn't need a "production" network it can use any network. It also should not be using a "production" network. Datastore has nothing to do with vMotion in this diagram – this is Maps – it would give a vmotion error if it wasn't on the datastore not a vmotion disabled..

QUESTION NO: 46

Which two circumstances might cause a DRS cluster to become invalid? (Choose two.)

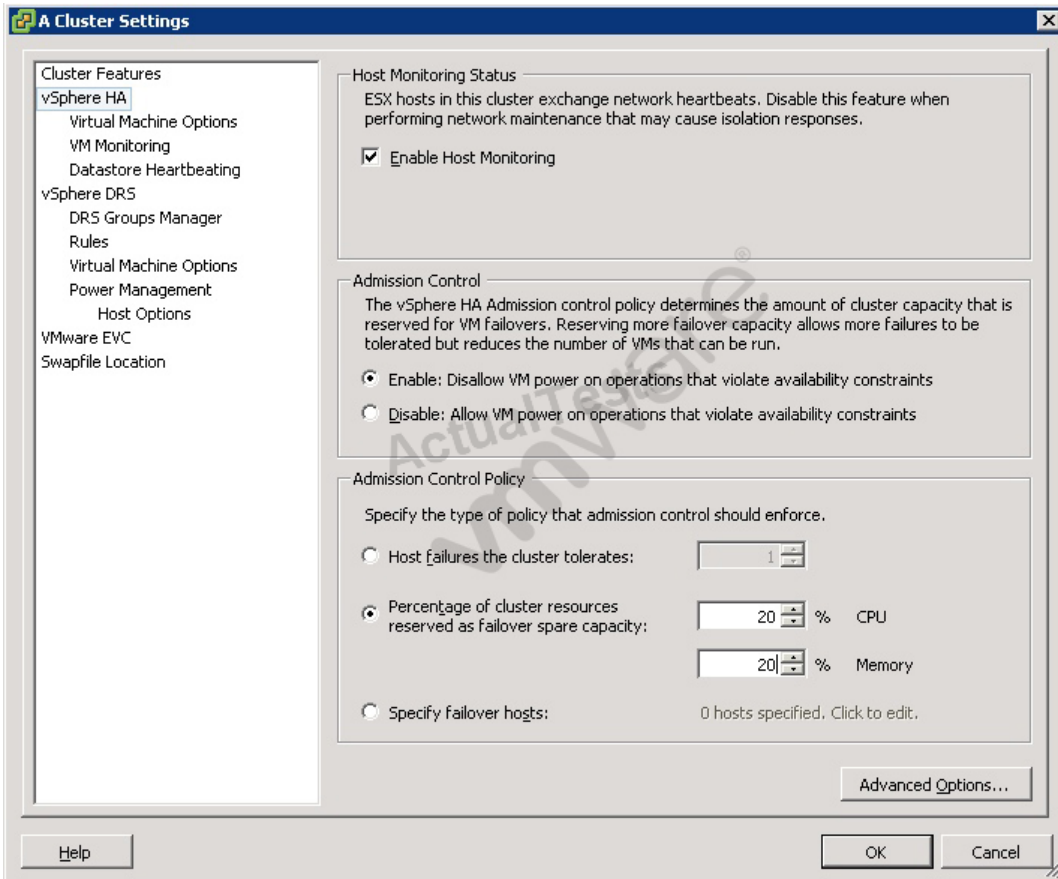
- A. DRS has been disabled on one or more ESXi hosts.
- B. An ESXi host has been removed from the cluster.
- C. A migration on a virtual machine is attempted while the virtual machine is failing over.
- D. Virtual machines have been powered on from a vSphere Client connected directly to an ESXi host.

Answer: B,D

Explanation:

QUESTION NO: 47

Click the Exhibit button.



An administrator has a DRS/HA cluster with five ESXi 5.x hosts. When the administrator tries to start a new Web server virtual machine, an error is displayed saying insufficient resources exist for HA.

Based on the HA configuration in the exhibit, which two changes can resolve the issue? (Choose two.)

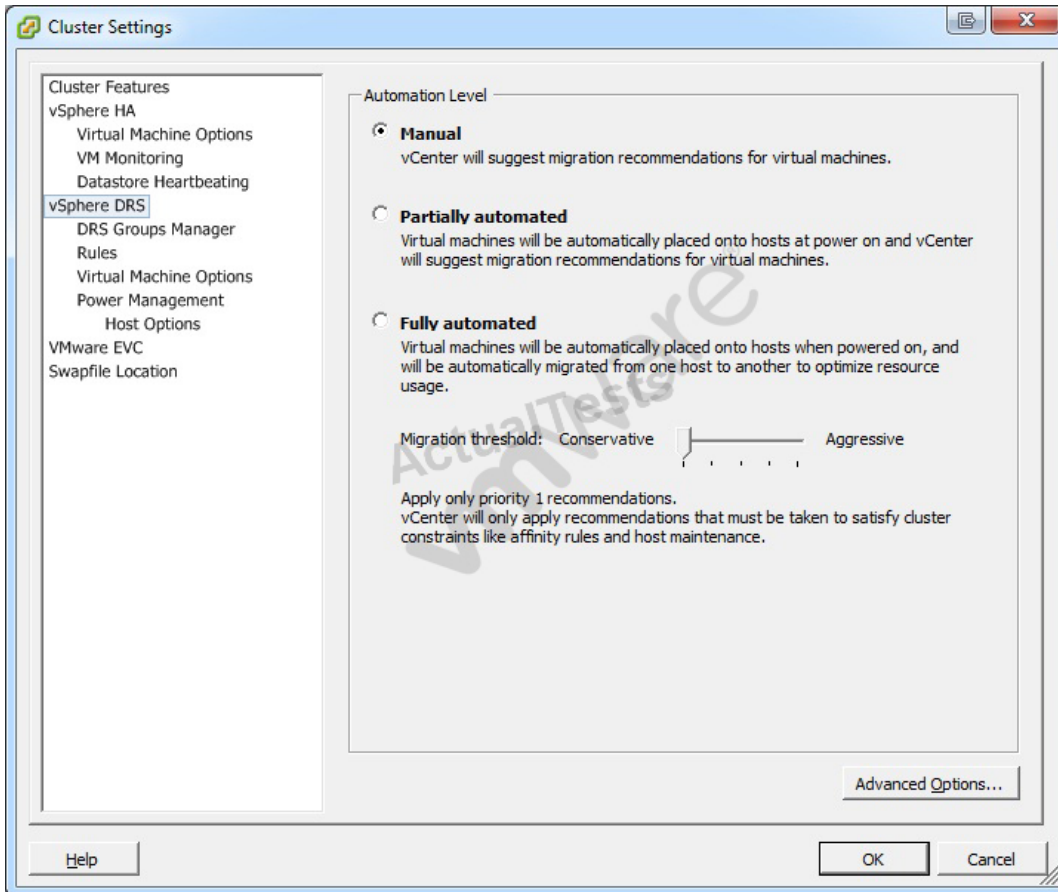
- A. Shut down one or more virtual machines on the cluster.
- B. Set VM Restart Priority to Disabled for the Web server.
- C. Set Host Isolation response to Shut down.
- D. Suspend one or more virtual machines in the cluster.

Answer: A,D

Explanation:

QUESTION NO: 48

Click the Exhibit button.



An administrator is applying patches to a batch of ESXi 5.x hosts in an under-allocated HA/DRS cluster. An attempt is made to place the host into maintenance mode, but the progress has stalled at 2%. DRS is configured as shown in the exhibit. Of the four choices below, two would effectively resolve this issue.

Which two steps could be taken to correct the problem? (Choose two.)

- A. Enable VMware EVC.
- B. Set the virtual machines on the host to Fully Automated.
- C. Shut down the virtual machines on the host.
- D. Move the virtual machine swap file off the local datastore.

Answer: B,C

Explanation:

QUESTION NO: 49

An administrator is configuring Storage DRS in their environment. The Ds. Storage DRS has been enabled, but is showing as disabled on several virtual machine disks in the datastore cluster.

Which two conditions would cause this error to occur? (Choose two.)

- A. The virtual machine is stored on a VMFS 3 volume.
- B. One or more virtual machines have Persistent disks.
- C. The virtual machine is stored on a NFS datastore.
- D. The virtual machine is stored on a datastore with a 2mb block size.

Answer: A,B

Explanation:

QUESTION NO: 50

An administrator finds that vMotion and Storage vMotion operations do not succeed on a virtual machine. The virtual machine has been configured with N_Port ID Virtualization. The virtual machine has two data RDMs, one using a RAID5 LUN and one using a RAID0+1 LUN. The mapping file for the RAID5 LUN was created on the same datastore as the virtual machine, and the mapping file for the RAID0+1 LUN was placed in a datastore used for production data virtual disks.

Which two statements are true about this configuration? (Choose two.)

- A. Storage vMotion cannot be used unless both mapping files are placed on the same datastore.
- B. vMotion cannot be used unless both mapping files are placed on the same datastore.
- C. vMotion cannot be used with RDMs.
- D. Storage vMotion cannot be used with NPIV.

Answer: B,D

Explanation:

NPIV Capabilities and Limitations

Learn about specific capabilities and limitations of the use of NPIV with ESXi.

ESXi with NPIV supports the following items:

- NPIV supports vMotion. When you use vMotion to migrate a virtual machine it retains the assigned WWN.

If you migrate an NPIV-enabled virtual machine to a host that does not support NPIV, VMkernel reverts to using a physical HBA to route the I/O.

- If your FC SAN environment supports concurrent I/O on the disks from an active-active array, the concurrent I/O to two different NPIV ports is also supported.

When you use ESXi with NPIV, the following limitations apply:

- Because the NPIV technology is an extension to the FC protocol, it requires an FC switch and does not work on the direct attached FC disks.
- When you clone a virtual machine or template with a WWN assigned to it, the clones do not retain the WWN.
- NPIV does not support Storage vMotion.
- Disabling and then re-enabling the NPIV capability on an FC switch while virtual machines are running can cause an FC link to fail and I/O to stop.

QUESTION NO: 51

A company has converted several physical machines to virtual machines but are seeing significant performance issues on the converted machines. The host is configured with sufficient memory and storage does not appear to be a bottleneck. Which metric can be checked to determine if CPU contention exists on an ESXi 5.x host?

- A. %RUN
- B. %WAIT
- C. %USED
- D. %RDY

Answer: D

Explanation:

QUESTION NO: 52

Which three statements regarding Network I/O Control (NIOC) are accurate? (Choose three.)

- A. NIOC enforces traffic bandwidth limits on the overall vDS set of dvUplinks.
- B. NIOC limits maximum throughput control on connected virtual machines.
- C. Load based teaming efficiently uses a vDS set of dvUplinks for network capacity.
- D. Isolation provides priority to any one traffic flow.
- E. Relative shares fairly allocates available bandwidth among multiple flows.

Answer: A,C,E

Explanation:

QUESTION NO: 53

Which three requirements must be met in order to use Storage I/O Control? (Choose three.)

- A. The datastore must contain multiple VMFS extents.
- B. The datastore must contain a single NFS volume.
- C. The datastore must not include virtual machines with snapshots.
- D. The datastore must be managed by a single vCenter Server.
- E. Array-based automated storage tiering must be explicitly certified.

Answer: B,D,E

Explanation:

Extents are only a single extent – not multiples. Also, because NFS is not VMFS it does not use extents. You grow the NFS from the actual NAS appliance itself with extents.

Storage I/O Control Requirements

Storage I/O Control has several requirements and limitations.

- Datastores that are Storage I/O Control-enabled must be managed by a single vCenter Server system.
- Storage I/O Control is supported on Fibre Channel-connected, iSCSI-connected, and NFS-connected storage. Raw Device Mapping (RDM) is not supported.
- Storage I/O Control does not support datastores with multiple extents.
- Before using Storage I/O Control on datastores that are backed by arrays with automated storage tiering capabilities, check the *VMware Storage/SAN Compatibility Guide* to verify whether your automated tiered storage array has been certified to be compatible with Storage I/O Control.

QUESTION NO: 54

What number of IOPS should be used with Storage I/O Control to limit disk throughput to roughly 10 MBps if the guest application writes 64KB blocks?

- A. 320
- B. 160
- C. 240
- D. 64

Answer: B

Explanation:

QUESTION NO: 55

It appears that a single vCPU virtual machine in a resource pool called Production is having performance problems because it does not have enough CPU resources available.

Which two methods can be used to improve performance and reduce CPU contention of this virtual machine while maintaining compatibility with DRS? (Choose two.)

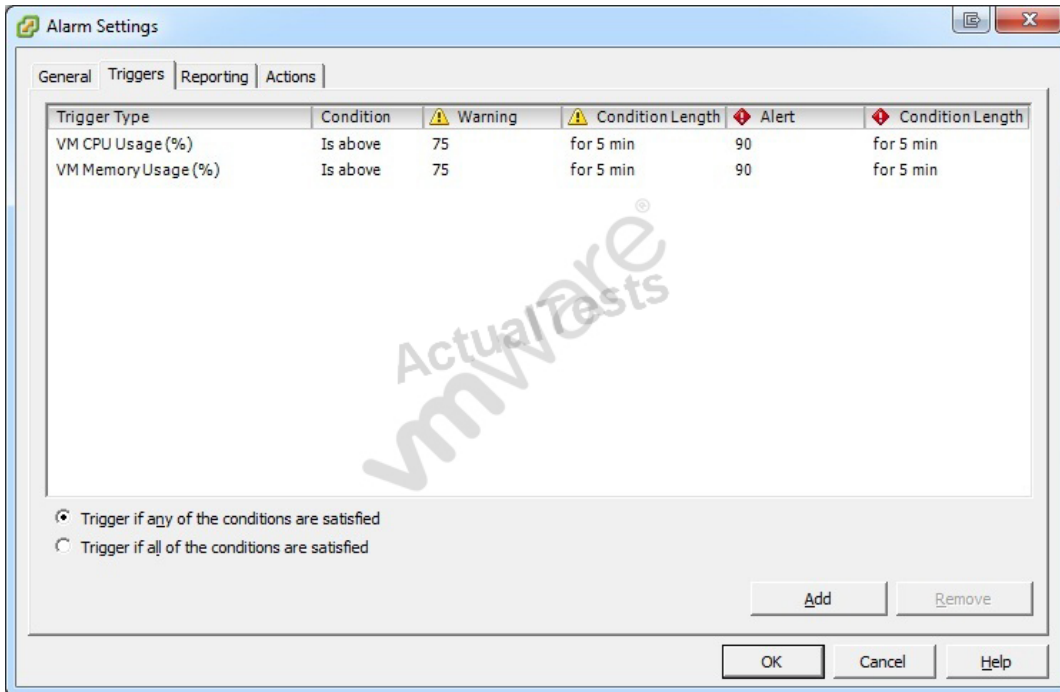
- A. Configure a CPU reservation for this virtual machine.
- B. Increase the CPU shares for the resource pool.
- C. Increase the CPU shares for the virtual machine.
- D. Increase the share priority setting for the Production resource pool.

Answer: A,C

Explanation:

QUESTION NO: 56

Click the Exhibit button.



ACME Party Supplies Corporation has a requirement to monitor all virtual machines in a vSphere 5 environment for CPU and Memory usage. An administrator configures an alarm in vCenter Server to send an alert when any VM exceeds 65% memory utilization and 75% CPU utilization. The alarm should warn administrators if the virtual machine is within 20% of the defined thresholds. The alarm has been created with the default options as shown in the exhibit.

Which three modifications must be made to the default settings in the alarm definition to satisfy the stated requirements? (Choose three.)

- A. Set the VM CPU Usage (%) Alert trigger to 75% and the VM Memory Usage (%) Alert trigger to 55%
- B. Set the VM CPU Usage (%) Alert trigger to 75% and the VM Memory Usage (%) Warning trigger to 55%
- C. Set the VM CPU Usage (%) Warning trigger to 65% and the VM Memory Usage (%) Warning trigger to 45%
- D. Set the Trigger if all of the conditions are satisfied radio button
- E. Set the Trigger if any of the conditions are satisfied radio button

Answer: A,C,E

Explanation:

QUESTION NO: 57

An administrator is performing maintenance on a storage array used by an ESXi 5.x host. The

administrator wants to disable alarm actions for the host while the maintenance is taking place.

What procedure will accomplish this task?

- A. Go to the Alarms tab for each ESXi host in the DRS cluster. Locate storage-related alarms. Right-click and disable each alarm.
- B. Right-click the DRS cluster and select Alarm and Disable Alarm Actions.
- C. Right-click the ESXi host and select Alarm and Disable Alarm Actions.
- D. Go to the Alarms tab for the Datacenter containing the DRS cluster. Locate the storage-related alarms. Right-click and disable each alarm.

Answer: C

Explanation:

QUESTION NO: 58

An administrator would like to have vCenter take action any time a virtual machine is using over 90% of its available resources for five minutes or longer.

Which three actions can be taken by vCenter Server in response to the trigger without running a script? (Choose three.)

- A. Power on a VM
- B. Reboot Guest on VM
- C. Increase Virtual Machine Memory
- D. Migrate a VM
- E. Increase Virtual Machine CPU Shares

Answer: A,B,D

Explanation:

QUESTION NO: 59

A group of virtual machines has been deployed using thin disks because of limited storage space availability. The storage team has expressed concern about extensive use of this type of provisioning. At which level can the administrator set an alarm to notify the storage team?

- A. Datastore
- B. Virtual Machine
- C. Host

D. Resource Pool

Answer: A

Explanation:

QUESTION NO: 60

An administrator has purchased a new 10GB Converged Network Adapter (CNA) for installation in a system that is running ESXi 5.x. The administrator has downloaded the latest driver from the hardware vendor and wants to include the driver in an image. The image profile acceptance level is set to VMwareSupported. The acceptance level of the driver is VMwareSupported.

Which two statements are true about the inclusion of this driver in the image? (Choose two.)

- A. Support calls for the driver will be directed to the partner.
- B. The image can be built, but the driver will not be included in the image.
- C. The image can be built and the driver will be included.
- D. Support calls for the driver will be handled by VMware.

Answer: A,C

Explanation:

QUESTION NO: 61

What are the three service offerings provided by a VMware-powered public cloud? (Choose three.)

- A. Committed
- B. Transient
- C. Dedicated
- D. Highly Elastic
- E. Basic

Answer: A,C,E

Explanation:

QUESTION NO: 62

An administrator has been tasked with upgrading an existing host from ESX 4.1 to ESXi 5.x. The existing host has only vSwitch0 with all the default settings.

The upgraded host will have the following new requirements.

1. 116 virtual machines will be connected.
2. Four uplinks configured for port-based load balancing.
3. The switch will include a secondary heartbeat network for HA.

Which two statements are true about this configuration? (Choose two.)

- A. The Service Console Port will be removed during the upgrade
- B. The configuration requires only one VMkernel Port
- C. The default vSwitch0 is sufficient for this configuration
- D. A change to vSwitch0 Properties is required

Answer: A,D

Explanation:

QUESTION NO: 63

Virtual machine VM1 is unable to communicate with virtual machine VM2. Both virtual machines are connected to a portgroup named Production on vSwitch1 on host ESXi01. Which statement could explain why?

- A. The only vmnic connected to vSwitch1 on ESXi01 is set to unused
- B. The only vmnic connected to vSwitch1 on ESXi01 is set to standby
- C. Load balancing settings on Production do not match vSwitch1
- D. VM1 is configured for VGT, VM2 is configured for VST

Answer: D

Explanation:

QUESTION NO: 64

An administrator is creating a new virtual machine using the New Virtual Machine wizard in custom mode on an ESXi 5.x host with two quad-core CPUs. What would limit the maximum number of virtual sockets for the virtual machine to 8? (Choose three.)

- A. Windows 2008 32-bit is configured as the guest operating system.
- B. Virtual machine hardware version 8 is configured for the VM.

- C. Hyperthreading is disabled on the ESXi host.
- D. The ESXi host is configured with a Standard license.
- E. The number of cores per virtual socket is set to 4.

Answer: C,D,E

Explanation:

QUESTION NO: 65

What are two methods of maximizing VMFS performance for virtual machines across all the hosts in a cluster? (Choose two.)

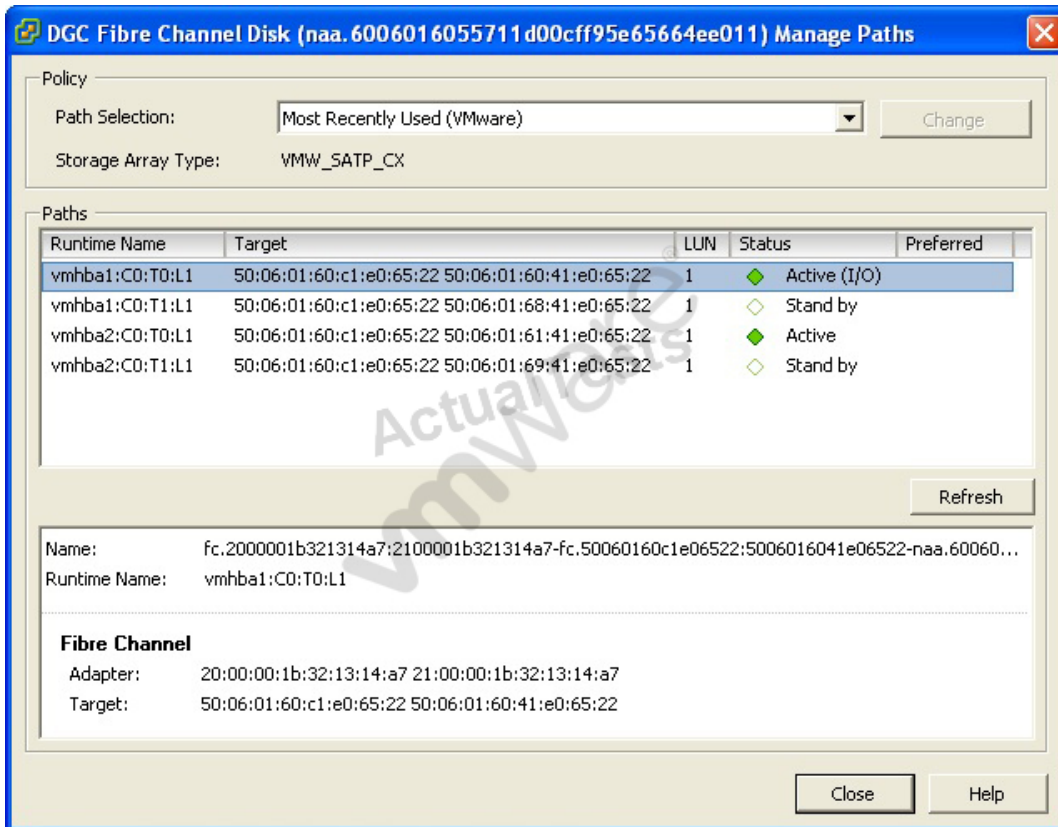
- A. Use disk shares to prioritize virtual machine disk I/O
- B. Enable Storage I/O control
- C. Enable Storage DRS with I/O load balancing
- D. Enable Host Cache using local SSD drives

Answer: B,C

Explanation:

QUESTION NO: 66

Click the Exhibit button.



For the selected item, what two properties could the storage administrator use to create a zone? (Choose two.)

- A. 20.00.00.1b.32.13.14.a7
- B. vmhba1.C0.T0.L1
- C. fc.2000001b321314a7.2100001b321314a7
- D. 50.06.01.60.c1.e0.65.22

Answer: A,D

Explanation:

QUESTION NO: 67

Which two statements are true regarding vSphere standard switches? (Choose two.)

- A. Beaconsing requires at least three uplinks to be considered useful.
- B. Virtual machines on different vSwitches require the vSwitches to share an uplink to communicate.
- C. vSphere virtual switches require at least one uplink adapter.
- D. Setting the number of ports to the maximum on a vSwitch will exhaust the total ports on a host.

Answer: A,D

Explanation:

QUESTION NO: 68

Which types of traffic can a VMkernel port be enabled to carry on a ESXi 5.x host? (Choose three.)

- A. NFS
- B. Fault Tolerant
- C. Management
- D. iSCSI
- E. vMotion

Answer: B,C,E

Explanation:

QUESTION NO: 69

Networking policies for a vSphere Standard Switch, such as traffic shaping and security, can be overridden on which vSphere elements?

- A. On the virtual machine
- B. On the physical switch
- C. On the physical network interface
- D. On the port group

Answer: D

Explanation:

QUESTION NO: 70

When would a license server be configured for vCenter Server 5.x?

- A. When managing ESX 3.x servers
- B. When the vCenter Server Virtual Appliance (vCSA) is used
- C. Within the first 60 days
- D. A standalone license server is installed by default

Answer: A

Explanation:

QUESTION NO: 71

What two Advanced IP Allocation Schemes are available? (Choose two.)

- A. Fixed
- B. DHCP
- C. OVF Environment
- D. Transient

Answer: B,C

Explanation:

QUESTION NO: 72

What are two valid Resource settings that can be set at the vApp level? (Chose two)

- A. Network
- B. CPU
- C. Memory
- D. Disk

Answer: B,C

Explanation:

QUESTION NO: 73

An administrator is investigating a report of slow disk performance. Where is the most efficient place for the administrator to check?

- A. The performance tab of the vApp.
- B. The performance tab of the virtual machine.
- C. The performance tab of the vApp resource pool.
- D. The performance tab of the cluster.

Answer: B

Explanation:**QUESTION NO: 74**

An administrator creates a new Role of "Virtual Machine Creator" for members of the helpdesk and server teams. Privileges include.

Datastore - Allocate space

Network - Assign network

Resource - Assign virtual machine to resource pool

Virtual machine > Configuration - all

Virtual machine > Interaction - all

The new role is granted to the teams at the appropriate VMs and Templates folder, Cluster and Datastore objects. After applying the role, users report they are unable to create new Virtual Machines. What should be changed to allow new virtual machines to be created?

- A. Add a privilege to the role Virtual machine > Inventory - Create new
- B. Grant the teams the role at the Datacenter level
- C. Ensure Propagate to Child Objects is selected on the objects.
- D. Grant the teams the role on the Production network object.

Answer: A

Explanation:

QUESTION NO: 75

A mid-size company with a vSphere 5 cluster wants to enable their helpdesk staff to be able to acknowledge alarms on the hosts. Currently the group "HelpDesk" has the Read-only role assigned to the Cluster object. Which action should the administrator perform?

- A. Enable Propagate to Child Objects on the current permission.
- B. Move the current permission to the Datacenter object.
- C. Add the Alarms - Acknowledge Alarm privilege to the current role and enable "Propagate to Child Objects"
- D. Clone the role, add the Alarms - Acknowledge Alarm privilege, replace the current role.

Answer: D

Explanation:

QUESTION NO: 76

A company is planning an upgrade from vSphere 4.x to vSphere 5. They currently have three dual CPU servers licensed for ESXi 4.1 Advanced

Each server has 256GB of RAM installed.

Their virtual machines are sized three ways.

Light. 1v CPU, 4GB RAM

Medium. 2v CPU, 8GB RAM

Heavy. 4 vCPU, 12GB RAM

The Production workload consists of.

20 Light servers

20 Medium servers

2 Heavy servers

The Development workload consists of.

10 Light servers

10 Medium servers

How will vSphere 5 licensing impact their upgrade? (Choose two.)

- A. They will need to purchase additional ESXi licenses.
- B. They will be able to reduce their power consumption.
- C. They will be restricted from powering on additional virtual machines.
- D. A license upgrade will be needed to add vCPUs to the Heavy servers.

Answer: B,C

Explanation:

QUESTION NO: 77

What is a benefit of vCenter Linked-Mode?

- A. Allows the vCenter Server Virtual Appliance (vCSA) to manage multiple sites
- B. Pools vRAM entitlement
- C. Increases vCenter security
- D. Increases vCenter reliability

Answer: B

Explanation:

QUESTION NO: 78

What virtual machine action listed below can be performed on a template?

- A. Power on
- B. Clone
- C. Edit Settings
- D. Migrate

Answer: B

Explanation:

QUESTION NO: 79

An administrator is attempting to clone a running virtual machine, but receives an error that prevents that the virtual machine is using a device that prevents the operation.

What two device types listed below could be causing this error? (Choose two.)

- A. An independent mode virtual disk
- B. A physical compatibility mode RDM
- C. An LSI logic SAS adapter
- D. A BusLogic Parallel adapter

Answer: A,B

Explanation:

QUESTION NO: 80

When cloning a virtual machine to a template, what two attributes from the list below can be changed for the destination virtual disk? (Choose two.)

- A. Virtual disk format
- B. Number of network adaptors
- C. IP Address
- D. Location for virtual machine files

Answer: A,D

Explanation:

QUESTION NO: 81

What tool can an administrator use to determine if an existing environment is ready for Fault Tolerance?

- A. Fault Tolerance Map
- B. VMware SiteSurvey Tool
- C. VMware Cluster Analyzer
- D. VMware Capacity Planner

Answer: B

Explanation:

QUESTION NO: 82

What two methods can be used to reduce the vMotion migration time of a virtual machine? (Choose two.)

- A. Enable High priority on the virtual machine before starting the Migrate wizard.
- B. Select High priority during the Migrate wizard.
- C. Lower the memory reservation for the virtual machine.
- D. Ensure the cluster has the default Swapfile policy set.

Answer: B,D

Explanation:

QUESTION NO: 83

Which types of devices can be connected to a virtual machine during a vMotion migration?
(Choose two.)

- A. SCSI pass-through devices connected to the ESXi 5 host.
- B. NFS mounts inside of the guest.
- C. USB pass-through devices connected to the ESXi 5 host.
- D. ISO images connected using the vSphere 5 client.

Answer: B,C

Explanation:

QUESTION NO: 84

An administrator notices that the database virtual machines fail to backup within the backup window. Each database virtual machine has 4 vCPUs, 16GB RAM and 12 virtual disks. There are 16 database virtual machines to backup using 8 backup jobs.

Which is the simplest way to improve the backup performance for these virtual machines?

- A. Add a backup job for each virtual machine.
- B. Set a 16GB reservation for each virtual machine.
- C. Add 1MB VMDK drives at 1.0, 2.0 and 3.0 on the VDR appliance.
- D. Upgrade the array to 8GB FCP and ensure multipathing is configured properly.

Answer: C

Explanation:

QUESTION NO: 85

What are three of the steps recalled patches automatically go through in vSphere Update Manager? (Choose three.)

- A. Hosts with recalled patches are placed maintenance mode.
- B. Hosts with recalled patches are remediated.
- C. The recalled patch binary is deleted from the repository.
- D. The recalled patch is flagged in the database.
- E. A notification is generated in the notification tab.

Answer: C,D,E

Explanation:

QUESTION NO: 86

Which configuration requires an additional database server when adding vSphere Update Manager 5.x to an environment?

- A. vCenter Server Virtual Appliance (vCSA) with an external Oracle database
- B. vCenter Application with the default database
- C. vCenter Application with an external SQL 2008 Enterprise database
- D. vCenter Server Virtual Appliance (vCSA) with an external DB2 database

Answer: D

Explanation:

QUESTION NO: 87

Select three of the steps for configuring iSCSI Software Initiator multipathing when load balancing with a single vSphere standard switch. (Choose three.)

- A. Change the Path Selection Policy to Round Robin (VMware)
- B. Enable Override switch failover order
- C. Enable Route based on IP Hash
- D. Enable iSCSI port binding on the VMkernel object or objects
- E. Add VMkernel adapters to the iSCSI Network Configuration

Answer: A,B,E

Explanation:

QUESTION NO: 88

An administrator wants to adjust disk resource allocation to ensure proper storage performance.

Which two mechanisms are available? (Choose two.)

- A. Shares

- B. Guarantee IOPs
- C. Limit IOPs
- D. Reservation

Answer: A,C

Explanation:

QUESTION NO: 89

Assuming that ballooning is possible, under which three circumstances might the VMkernel use a swap file for a running virtual machine? (Choose three.)

- A. The Mem.CtlMaxPercent value is between 10 and 25 percent.
- B. Memory cannot be reclaimed quickly enough.
- C. The virtual machine is starting up.
- D. VMware Tools is not installed.
- E. 50% of the configured memory has already been ballooned.

Answer: A,B,E

Explanation: C: Wrong: When the machine is starting up the Ballooning driver hasn't loaded yet.D: Wrong: When VMware tools is not installed Ballooning isn't possible

QUESTION NO: 90

Which functions can be performed with the Plug-in Manager? (Choose two.)

- A. Enable an installed plug-in
- B. Remove permissions for a plug-in
- C. View the status of installed plug-ins
- D. Uninstall a plug-in

Answer: A,C

Explanation:

QUESTION NO: 91

What are two requirements for successful vMotion migration? (Choose two.)

- A. CPUs with matching SpeedStep settings must exist on both the source and destination hosts.
- B. Virtual machines must not utilize hardware local to the host such as SCSI pass-through.
- C. Virtual machines must not have a CDROM connected via the vSphere client.
- D. Dedicated Gigabit Ethernet Networking must exist between the source and destination hosts.

Answer: B,C

Explanation:

QUESTION NO: 92

Which two options will be presented during the Migrate wizard for a powered on virtual machine?
(Choose two.)

- A. Change Host
- B. Change Host and Datastore
- C. Change Network
- D. Change Datastore

Answer: A,D

Explanation:

QUESTION NO: 93

What are two requirements for a fully functional vSphere HA cluster? (Choose two.)

- A. vCenter installed or a vCenter Server Virtual Appliance (vCSA) deployed.
- B. Access to local storage for each host in the cluster.
- C. Static IP addresses entered in each hosts file in the cluster.
- D. A minimum of one VMkernel port per host.

Answer: A,D

Explanation:

QUESTION NO: 94

An administrator plans to deploy ESXi 5.x, but does not want to use CD or DVD media.

What are two alternate ways to provide the ESXi 5.x installation script to the host? (Choose two.)

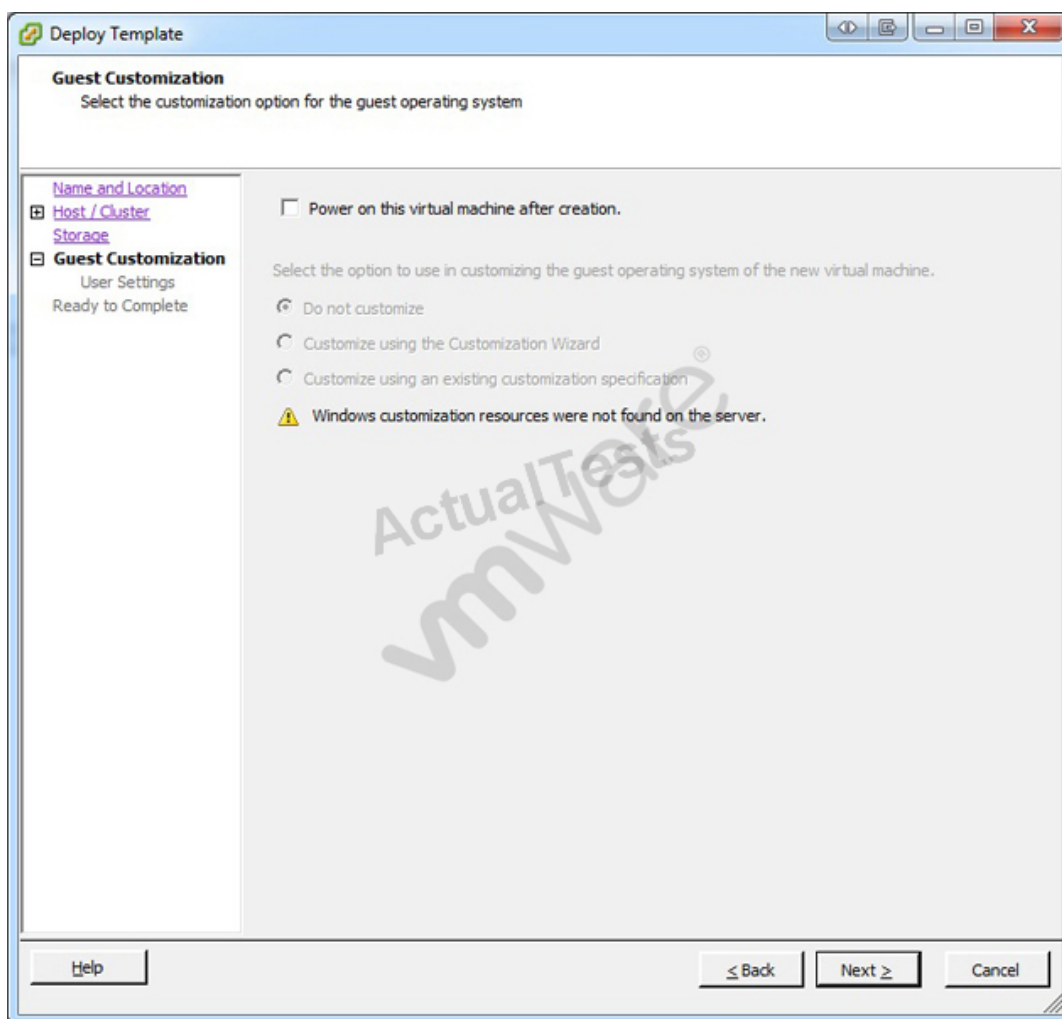
- A. PXE
- B. FTP
- C. HTTP
- D. IPMI

Answer: B,C

Explanation:

QUESTION NO: 95

Click the Exhibit button.



An administrator has implemented a new vSphere 5 environment and is deploying their first Windows 2008 R2 template. When running the Deploy Template wizard, the error shown in the exhibit appears. What can be done to correct the problem?

- A. Select the correct guest OS setting for the virtual machine.
- B. Windows 2003 x64 cannot be customized.
- C. Download and install the Microsoft Sysprep tool into the virtual machine to be customized.

D. Download the Microsoft Sysprep tool to the appropriate vCenter Server directory.

Answer: A

Explanation: <http://communities.vmware.com/thread/45830>

A is correct.

See also the table at:

http://kb.vmware.com/selfservice/microsites/search.do?language=en_US&cmd=displayKC&externalId=1005593

sysprep is not applicable for Windows vista/2008/7

QUESTION NO: 96

An administrator uses VMware Data Recovery to make backups of virtual machines. Checking on the backup jobs that were run the previous evening, the administrator notices that some jobs completed but that other jobs did not.

What are two possible causes for the failure? (Choose two.)

- A. The deduplication store had 400GB of available space before the start of the affected jobs.
- B. Eight backup jobs were running simultaneously, causing new jobs to fail to start.
- C. The backup window was not open long enough to retrieve all of the changed blocks.
- D. CPU utilization on the VDR appliance exceeded 90% before one or more jobs executed.

Answer: B,C

Explanation:

QUESTION NO: 97

An administrator is responsible for enabling file access for desktop users. Many users have complained that they cannot access their files. An alert in the vSphere Client states that the storage connectivity alarm for all hosts has been triggered. The storage screen indicates that everything is connected, but the triggered alert has not been acknowledged.

Which action will correct the user access problem?

- A. Rescan the storage on the file-sharing virtual machine on which the users are seeing the problem.

- B. Reconnect the storage containing the user files to all hosts in the cluster, then Refresh datastores on all hosts in the cluster.
- C. Tell each user to reboot their computer.
- D. Reconnect the storage containing the user files to all hosts in the cluster, then Rescan datastores on all hosts in the cluster.

Answer: D

Explanation:

QUESTION NO: 98

While performing a security check the vSphere administrator finds unassigned AD accounts with vSphere permissions. If the accounts are removed from Active Directory what will happen to any user logged into vCenter with those accounts?

- A. The vSphere client warns the user they will be logged out in 1 hour.
- B. The user can remain logged in indefinitely.
- C. The user is immediately disconnected from vCenter Server and cannot log back in.
- D. The user can remain logged into vCenter for up to 24 hours.

Answer: D

Explanation:

QUESTION NO: 99

Where are IP addresses for a vSphere Storage Appliance (VSA) cluster managed?

- A. On each VSA appliance using a web-based portal
- B. On the VSA Manager tab for the cluster hosting VSA
- C. On the VSA Manager appliance using a web-based portal
- D. On the vCenter server installed on a VSA host

Answer: B

Explanation:

QUESTION NO: 100

An administrator is configuring a stretched HA configuration and has HA errors on all of the hosts at the remote site. What can be done to ensure virtual machines at one site can be restarted at the

remote site?

- A. Ensure any firewalls between the hosts are allowing port 8182
- B. Create separate HA clusters at each site and enable Stretch Cluster on each
- C. Ensure the latency between the sites is less than 5 milliseconds
- D. Ensure each site has no more than 4 primary hosts

Answer: A

Explanation:

Topic 2, Volume B

QUESTION NO: 101

What is a valid example of a vSphere Update Manager upgrade?

- A. A VMware Tools upgrade on a Fault Tolerant machine with automatic snapshots.
- B. Upgrading and patching multiple ESXi hosts simultaneously in a selected cluster.
- C. Upgrading an ESX 4.1 host to ESXi 5.x with a sufficient boot partition.
- D. An ESXi 5.x host update with automatically deleted snapshots.

Answer: C

Explanation:

QUESTION NO: 102

Which is an important benefit provided by VLANs?

- A. Reduced hardware requirements
- B. Increased broadcast traffic
- C. Fault tolerance
- D. Increased security on a network segment

Answer: A

Explanation:

QUESTION NO: 103

Before upgrading an ESXi host to vSphere 5.x from vSphere 4.x, which three actions should be

taken? (Choose three.)

- A. Update vCenter from 4.x to 5.x
- B. Convert any Service Console port to Management.
- C. Add an updated license to the host
- D. Update vSphere 4.x licenses using the VMware License Portal
- E. Verify the intended host is compatible with vSphere 5.x

Answer: A,D,E

Explanation:

QUESTION NO: 104

Recently, a storage interface card in an ESXi 5.x host has been experiencing inconsistent connectivity states.

Which two methods can be used to quickly identify the issue and immediately notify an administrator so that the issue can be resolved? (Choose two.)

- A. Set up an alarm with the Lost Storage Path trigger to send an email for notification when the connection is lost.
- B. Set up an alarm with the Lost Storage Connectivity trigger to send an email for notification when the connection is lost.
- C. Set up an alarm with the Storage Redundancy Degraded trigger and configure an SNMP trap for notification when the connection is lost.
- D. Set up an alarm with the Lost Storage Connectivity trigger and configure an SNMP trap for notification when the connection is lost.

Answer: B,D

Explanation:

QUESTION NO: 105

The VMware vCenter Server Virtual Appliance (vCSA) offers many features of the Windows application version.

Which of the following features is only available on the Windows application version of vCenter?

- A. Host Profiles

- B. Template and clone customization
- C. Active Directory authentication
- D. IPv6

Answer: D

Explanation: http://www.vmware.com/support/vsphere5/doc/vsp_vc50_u1a_rel_notes.html

- vCenter Server Virtual Appliance does not support IPv6

Although the vCenter Server Virtual Appliance Web console has an option to configure IPv6,

vCenter Server Virtual Appliance does not support IPv6 configuration. Workaround: Do not set or change IPv6 configuration on the vCenter Server Virtual Appliance Web console.

QUESTION NO: 106

An administrator is configuring a vSphere HA cluster for three ESXi 5.x hosts and their resident virtual machines. The cluster will be configured to support a single host failure. Resource reservations must be enforced during a failover event.

Assuming default settings, how does HA determine the current failover capacity?

- A. Calculating the largest possible CPU and Memory guarantee for any running virtual machine in the cluster, then calculating how many virtual machines of that size can be started on the largest host and reserving space in the cluster accordingly.
- B. Averaging the largest possible CPU and Memory guarantee for any running virtual machine in the cluster, then calculating how many virtual machines of that size can be started on the largest host and reserving space in the cluster accordingly.
- C. Calculating the largest possible CPU and Memory guarantee for any virtual machine in the cluster, then calculating how many virtual machines of that size can be started on the largest host and reserving space in the cluster accordingly.
- D. Averaging the largest possible CPU and Memory guarantee for any virtual machine in the cluster, then calculating how many virtual machines of that size can be started on the largest host and reserving space in the cluster accordingly.

Answer: A

Explanation:

QUESTION NO: 107

What are three valid subprofile configurations that can be edited with the Host Profile editor?

(Choose three.)

- A. Cluster
- B. Date and Time
- C. Networking
- D. Security
- E. Licensing

Answer: B,C,D

Explanation:

QUESTION NO: 108

An administrator finds that an ESXi 5.x host cannot be managed by vCenter Server.

Which three logs can be reviewed using the DCUI? (Choose three.)

- A. Syslog
- B. Config log
- C. Virtual Center Agent
- D. ESXi shell logs
- E. VMware HA log

Answer: A,B,C

Explanation:

QUESTION NO: 109

Which two steps are required before VMware Data Recovery can be used? (Choose two.)

- A. The Data Recovery Appliance Module must be installed on vCenter Server.
- B. A private network must be created for the backup appliance.
- C. The vSphere Client plug-in must be installed on any machine VDR will be managed from.
- D. The Data Recovery backup appliance must have additional storage added to it.

Answer: C,D

Explanation:

QUESTION NO: 110

Which three tasks can be selected from the home page of an ESXi 5.x host? (Choose three.)

- A. Browse objects managed by the host
- B. Browse NFS mounts for this host
- C. Download VMware vCenter or the vSphere client from vmware.com
- D. Shutdown or restart the host
- E. Download the PowerCLI installer

Answer: A,B,C

Explanation:

QUESTION NO: 111

When deploying an OVF template, the resulting virtual disk is created in what file format?

- A. OVF
- B. VMDK
- C. VMX
- D. VSWP

Answer: B

Explanation:

QUESTION NO: 112

A new LUN has been provisioned to all hosts in a vSphere 5.x cluster. On one host a new VMFS datastore has been created. How will the new datastore be discovered by the other ESXi 5.x hosts?

- A. A rescan of all host bus adapters is periodically performed by ESXi hosts to detect new VMFS datastores.
- B. New VMFS volumes are automatically added to members of a cluster by vCenter 5.
- C. A manual refresh is required on each ESXi 5.x hosts to discover new VMFS datastores.
- D. A refresh of all host bus adapters is periodically performed by ESXi hosts to detect new VMFS datastores.

Answer: C

Explanation:

QUESTION NO: 113

Assuming that the appropriate HA configuration options have been selected, in which two situations would vSphere HA be unable to restart virtual machines? (Choose two.)

- A. A storage error has occurred on the fiber channel storage array.
- B. An ESXi host in the cluster becomes isolated from the network
- C. An ESXi host was automatically put into Standby Mode
- D. Licensing was not updated after an upgrade from vSphere 4.x

Answer: A,D

Explanation:

QUESTION NO: 114

What do changes made to resources reserved by a resource pool affect in the resource hierarchy?

- A. Child pools
- B. Host pools
- C. Sibling and parent pools
- D. Root resource pools

Answer: C

Explanation:

A resource pool can contain child resource pools, virtual machines, or both. You can create a hierarchy of shared resources. The resource pools at a higher level are called parent resource pools. Resource pools and virtual machines that are at the same level are called siblings. The cluster itself represents the root resource pool. If you do not create child resource pools, only the root resource pools exist.

In the following example, RP-QA is the parent resource pool for RP-QA-UI. RP-Marketing and RP-QA are siblings. The three virtual machines immediately below RP-Marketing are also siblings.
Figure 8-1. Parents, Children, and Siblings in Resource Pool Hierarchy

**QUESTION NO: 115**

How can virtual machines be moved between datacenters?

- A. High-Availability failover
- B. Cold migration
- C. vMotion migration
- D. Storage vMotion migration

Answer: B

Explanation:

QUESTION NO: 116

An administrator decides to use Data Recovery to back up some key virtual machines. What is the process to install Data Recovery?

- A. Download the executable from VMware.com and run from a machine with the vSphere Client installed.
- B. Use the vCenter Installer from the original vCenter media and select VMware Data Recovery
- C. Download the current OVF package from VMware.com onto a machine with the vSphere Client installed and use the Deploy OVF from Template option.
- D. Download the vmdk and vmx files from VMware.com and copy to a datastore. Right-click the vmx file and select Add to Inventory.

Answer: C

Explanation:

QUESTION NO: 117

Which two statements are true about the share value for a virtual machine after it has been added to a resource pool? (Choose two.)

- A. If a previously defined custom share value exists, the total shares in the pool should be evaluated to maintain the expected performance.
- B. If a previously defined custom share value exists, the %Shares value will automatically be adjusted relative to the total number of shares in the pool.
- C. If a previously defined share level (high, medium, low) exists, the %Shares value is changed to Custom and the previous value is retained.
- D. If there are no other objects in the pool the share value is irrelevant.

Answer: A,D

Explanation:

QUESTION NO: 118

The storage administrator has recommended testing the performance benefits of jumbo frames and enabled jumbo frames on the storage array. The VMware administrator has enabled jumbo frames on the VMkernel port used for the software iSCSI initiator.

What other two components must be modified to enable jumbo frames support for the software iSCSI initiator? (Choose two.)

- A. The physical switch
- B. The port group
- C. The software initiator
- D. The virtual switch

Answer: A,D

Explanation:

QUESTION NO: 119

If you create a custom role and do not assign privileges what system-defined privileges are added? (Choose two.)

- A. System.Anonymous
- B. System.Read
- C. System.Write
- D. System.Administrator

Answer: A,B

Explanation:

QUESTION NO: 120

Assuming that VLANs are not configured, what is true about traffic from a virtual machine connected to a port group on a vSphere Standard Switch with no uplinks?

- A. The virtual switch will drop the packets if no uplink is present.
- B. Virtual machines on any vSphere Standard Switch on the same ESXi host can receive the traffic.
- C. Virtual machines in any port group on the virtual switch can monitor all of the traffic.
- D. vMotion will not migrate any Virtual machines connected to a port group on the virtual switch.

Answer: D

Explanation:

QUESTION NO: 121

What function does Enhanced vMotion Compatibility (EVC) provide?

- A. The ability to enable Fault Tolerance on virtual machines that are not members of a cluster.
- B. The ability to use vMotion to migrate virtual machines between ESXi hosts with different CPU vendors.
- C. The ability to replace manual CPU identification masks with an automated process managed by the cluster.
- D. The ability to use vMotion to migrate virtual machines between hosts with identical CPUs but different vSphere versions.

Answer: C

Explanation:

QUESTION NO: 122

What is the default VFAT scratch partition size for ESXi 5.x when installed on a USB drive?

- A. 600MB
- B. 544MB
- C. 4GB
- D. none

Answer: D

Explanation:

QUESTION NO: 123

What is one requirement when adding an extent to a VMFS datastore?

- A. A new unused NFS mount
- B. An RDM with sufficient space available
- C. An unused iSCSI or FCP LUN
- D. Free space on the LUN holding the VMFS datastore

Answer: C

Explanation:

QUESTION NO: 124

What is an accurate statement about the secondary virtual machine of a VM that has VMware Fault Tolerance enabled?

- A. The secondary virtual machine cannot be stored on an NFS datastore.
- B. The secondary virtual machine is created on the same host as the primary.
- C. The secondary virtual machine can prevent other virtual machines from powering up.
- D. The secondary virtual machine can be used for load balancing.

Answer: C

Explanation:

QUESTION NO: 125

What is true about the HA agent on ESXi 5.x hosts?

- A. HA agent logs and entries use the prefix "aam"
- B. HA agents are set to start by default
- C. HA agents can store configuration information locally
- D. The vSphere client cannot determine which HA agent is the master

Answer: C

Explanation:

QUESTION NO: 126

An administrator is enabling Network I/O Control (NIOC) on a vSphere Distributed Switch.

Which types of network traffic can be prioritized with NIOC by default? (Choose three.)

- A. FCP Traffic
- B. NFS Traffic
- C. Virtual Machine Traffic By Virtual Machine
- D. iSCSI Traffic
- E. vSphere Replication (VR) Traffic

Answer: B,D,E

Explanation:

QUESTION NO: 127

How can you verify that vStorage APIs for Array Integration (VAAI) functionality is enabled for a storage array in a vSphere 5.x implementation?

- A. VAAI will be reported on the Hard Disk properties page for any VMDK stored on a compliant array
- B. Hardware Acceleration will be reported on the Hard Disk properties page for any VMDK stored on a compliant array
- C. Supported will be listed in the VAAI column for any datastore created on a compliant array
- D. Supported will be listed in the Hardware Acceleration column for any datastore created on a compliant array

Answer: D

Explanation:

QUESTION NO: 128

The RDP performance for a virtual machine on an ESXi 5.x host appears to be degraded.

What are two possible causes of the problem? (Choose two.)

- A. The virtual machine has a high Ready value.
- B. The virtual machine's network adaptor is not configured to Connect at power on.
- C. The virtual machine's network adaptor is not configured as connected.
- D. The virtual machine is on a physical network that has become saturated.

Answer: A,D

Explanation:

QUESTION NO: 129

An administrator wants to configure a DRS Migration Threshold that allows automated migration only when a host is placed into maintenance or to satisfy cluster constraints.

What setting should be utilized?

- A. Priority 2
- B. Priority 4
- C. The most conservative setting
- D. The default setting

Answer: C

Explanation:

QUESTION NO: 130

Which conditions are true regarding an ESXi 5.x host placed into maintenance mode while a member of a DRS cluster? (Choose two.)

- A. If the DRS cluster is in partially automated mode and vMotion is configured, its virtual machines will be moved automatically to other hosts in the cluster.
- B. If the DRS cluster is in fully automated mode and vMotion is configured, its virtual machines will be moved automatically to other hosts in the cluster.
- C. If the DRS cluster is in partially automated mode and vMotion is configured, its virtual machines that have a high restart priority will be migrated to other hosts in the cluster.
- D. All the virtual machines on the host must be migrated or powered off before the ESXi host will

complete entering maintenance mode.

Answer: B,D

Explanation:

QUESTION NO: 131

When designing a storage infrastructure to support ESXi 5.x hosts what limit will be reached first?

- A. Maximum number of NFS datastores
- B. Maximum number of iSCSI LUNs
- C. Maximum number of paths to an iSCSI RDM
- D. Maximum number of iSCSI paths on a host

Answer: C

Explanation:

QUESTION NO: 132

An administrator is performing upgrades to ESXi 5.x from ESX 3.x and ESX 4.x hosts.

What is true about this procedure?

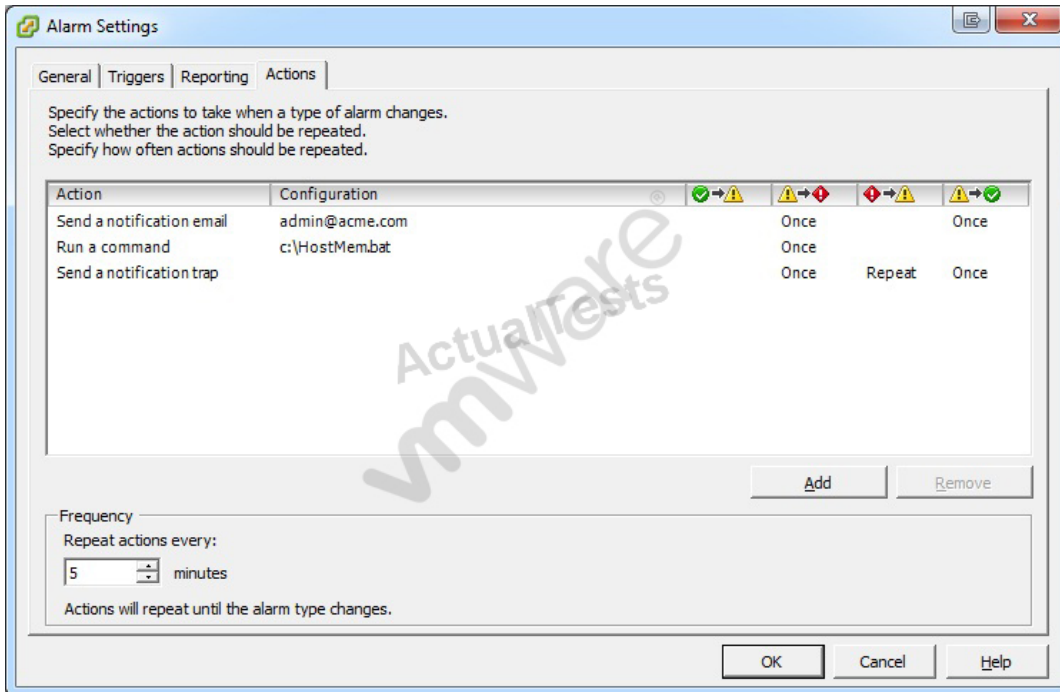
- A. A direct, in-place upgrade can be performed only on ESX 4.1 and later hosts.
- B. ESX 3.x hosts can be upgraded, but require an upgrade to 4.x before 5.x.
- C. A direct, in-place upgrade can be performed only on ESX 4.5 and later hosts.
- D. A direct, in-place upgrade can be performed only on ESX 3.5 and later hosts.

Answer: B

Explanation:

QUESTION NO: 133

Click the Exhibit button.



An administrator is seeing a warning on one of their hosts. The warning in the Triggered Alarms panel appears to come from a custom configured host alarm. The administrator has not seen any actions taken for this alarm even though the actions are configured in the alarm definition. The configured actions are shown in the exhibit.

What change can the administrator make to correct the problem?

- A. Configure the Alarm Frequency to repeat more often.
- B. Add an action for when the alarm changes from yellow to red.
- C. Add an action for when the alarm changes from green to yellow.
- D. Configure the alarm yellow to red action to repeat for all three actions configured.

Answer: C

Explanation:

QUESTION NO: 134

What differentiates a private cloud from a vSphere Infrastructure?

- A. A private cloud requires pooled resources including storage and networking.
- B. vSphere Infrastructure assumes a secure location for the workloads.
- C. vSphere Infrastructure allows consumption of resources over open standards.
- D. A private cloud assumes the consumer will maintain their portion of the infrastructure.

Answer: A

Explanation:

QUESTION NO: 135

Which is the most secure method of connecting to an iSCSI storage array using an independent hardware iSCSI adapter?

- A. One-way CHAP
- B. Mutual CHAP
- C. Per-target CHAP
- D. Per-subnet CHAP

Answer: A

Explanation:

QUESTION NO: 136

When an explicit failover order has been configured on a virtual switch with multiple uplinks, what determines which uplink is used when a failover event occurs?

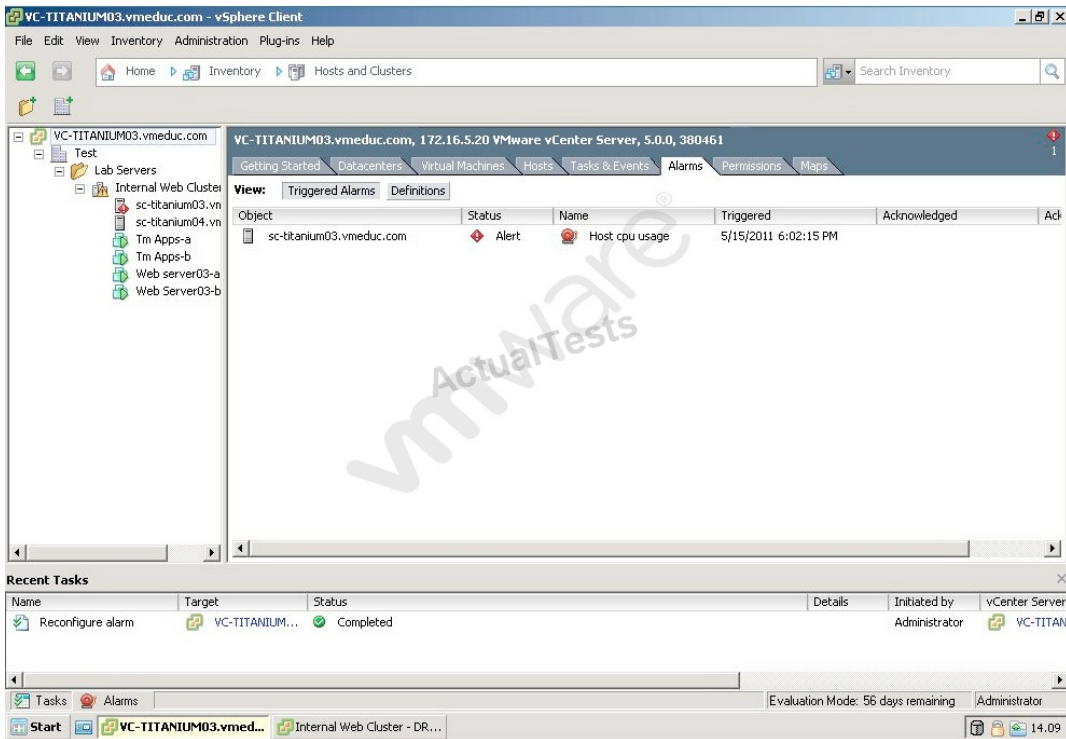
- A. The first available uplink that reports a positive link state
- B. The reported uptime for the surviving uplinks
- C. The next available uplink on the list
- D. The uplink with the shortest route

Answer: C

Explanation:

QUESTION NO: 137

Click the Exhibit button.



Users are having difficulty accessing a Web server since a new Web application was configured in a virtual machine running on sc-titanium03.vmeduc.com. The web server has been assigned 1 vCPU. The vSphere Client reports the error shown in the exhibit. DRS is set to fully automated mode, but the problem has not resolved.

Which action can resolve the issue?

- A. Set a CPU reservation for the web server VM.
- B. Manually move the Virtual Machine using high priority vMotion.
- C. Configure the DRS Migration Threshold to Aggressive.
- D. Set CPU affinity for the virtual machine.

Answer: A

Explanation:

QUESTION NO: 138

Users are complaining that they cannot access their files on a file server virtual machine. The vSphere Client shows that a triggered alarm stating disk latency is beyond the default threshold for the datastore where the file server virtual machine is located. The path selection policy has been set by the ESXi host to Fixed with default path settings.

Which two options could be used to increase performance of the file server virtual machine?

(Choose two.)

- A. Use disk shares to increase the priority for the datastore housing the file server virtual machine.
- B. Use vMotion to relocate the VM to an ESXi host with lower HBA saturation.
- C. Change the path selection policy to Round Robin.
- D. Change the path selection policy to Most Recently Used (MRU).

Answer: B,C

Explanation:

QUESTION NO: 139

When PSA is coordinating the VMware NMP and any installed third-party MPPs, the MPPs perform which task?

- A. Implement logical device bandwidth sharing
- B. Handle I/O queuing to the logical devices
- C. Provide logical device and physical path I/O statistics
- D. Manage physical path claiming and unclaiming

Answer: D

Explanation:

QUESTION NO: 140

When creating a dvPort group, which port binding option assigns a port to a virtual machine when the virtual machine is first powered on?

- A. Static binding
- B. Flexible
- C. Ephemeral
- D. Dynamic binding

Answer: D

Explanation:

QUESTION NO: 141

A new ESXi 5.x host is set up with two virtual machines. A memory limit is applied so that users will have predictable performance as virtual machines are added to the host.

What is the effect of applying a memory limit to these virtual machines?

- A. No physical memory will be granted above the limit, but VSWP can be used.
- B. No physical memory will be granted above the limit, unless expandableVM shares are set to high.
- C. Physical memory will be granted above the limit under normal conditions. Disk pages will be used if contention occurs.
- D. Physical memory will be granted above the limit under normal conditions, unless physical memory runs out.

Answer: A

Explanation:

QUESTION NO: 142

Which are the correct parameters to specify when adding an iSCSI target to an ESXi 5.x host using the Static Discovery tab?

- A. iSCSI server ip address, port 902
- B. iSCSI server ip address, port 3260
- C. iSCSI server ip address, port 902, iSCSI target name
- D. iSCSI server ip address, port 3260, iSCSI target name

Answer: D

Explanation:

QUESTION NO: 143

Which two options cannot be edited if vApp Options is disabled in the Options tab of a virtual machine that is part of a vApp? (Choose two.)

- A. Transient IP Addresses
- B. Configure OVF properties
- C. IPv6 Protocol
- D. IPv4 Protocol

Answer: A,B

Explanation:

QUESTION NO: 144

An administrator decides to implement a Fixed multipathing policy for an ESXi 5.x host with four available paths to one VMFS datastore. After the policy has been enabled for the datastore, how many paths will have an active status by default?

- A. 4
- B. 3
- C. 1
- D. 2

Answer: A

Explanation:

QUESTION NO: 145

An administrator is updating a program running on a virtual machine. The update file has been downloaded as an .iso file and placed on a shared NFS datastore. An attempt to mount the .iso file to the virtual machine fails, but subsequent testing shows that the .iso file can be mounted to a virtual machine running on another ESXi 5.x host.

Which step can be taken to enable access to the .iso file for the affected virtual machine?

- A. Reboot all ESXi hosts in the cluster where the affected virtual machine is running.
- B. Refresh all datastores on the ESXi host running the affected VM.
- C. Rescan all datastores on the ESXi host running the affected VM.
- D. Unmount the volume from the ESXi host running the affected VM, and then add as a new datastore.

Answer: B

Explanation:

QUESTION NO: 146

Which two conditions could prevent HA from powering on a virtual machine? (Choose two.)

- A. There is not enough free memory to meet the guests memory reservation.

- B. The virtual machine has been assigned a required affinity rule.
- C. Strict admission control is disabled for the HA cluster.
- D. The vCenter is hosted on the ESXi host that failed.

Answer: A,B

Explanation:

QUESTION NO: 147

Which two migration techniques can be used together to move a running virtual machine to a local datastore on a different server? (Choose two.)

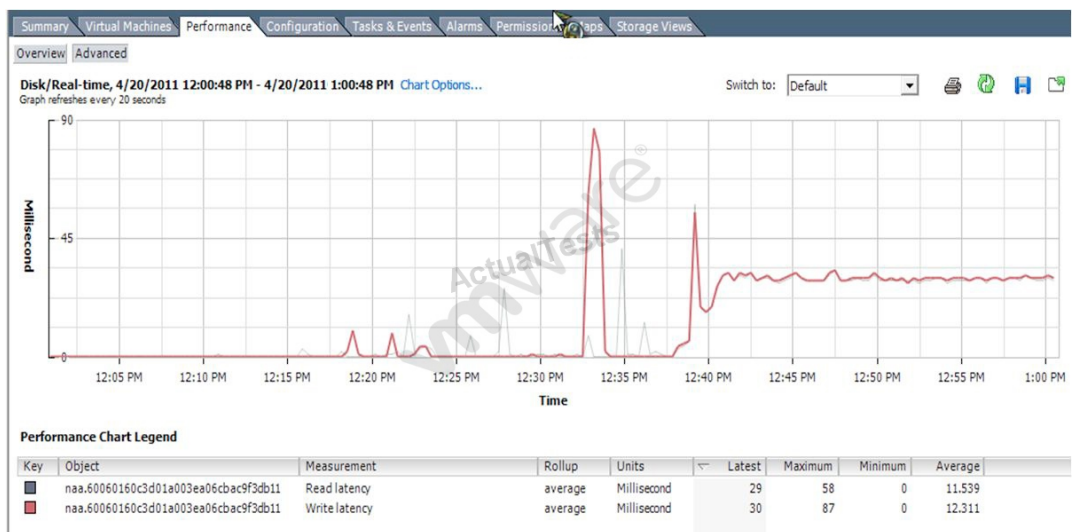
- A. Cold migration
- B. Storage vMotion
- C. vMotion
- D. vSphere Clone

Answer: B,C

Explanation:

QUESTION NO: 148

Click the Exhibit button.



What does the graph in the exhibit indicate?

- A. The average amount of read and write latency from the ESXi host to the SAN.
- B. The average amount of read and write latency from the guest operating system to the virtual machine virtual disk file.
- C. The average amount of read and write latency from the ESXi host to the datastore.
- D. The average amount of read and write latency from the cluster to the datastore.

Answer: C

Explanation:

QUESTION NO: 149

In vSphere, a bound physical NIC can be configured to transmit and receive jumbo frames.

What is the default maximum transmission unit (MTU) in vSphere?

- A. 1500
- B. 5500
- C. 9000
- D. 9500

Answer: A

Explanation:

QUESTION NO: 150

On which two vSphere elements can traffic shaping be configured? (Choose two.)

- A. On a vSphere Distributed Switch dvPort for inbound and/or outbound traffic
- B. On a vSphere Distributed Switch for inbound and/or outbound traffic
- C. On a vSphere Standard Switch port group or the entire vSwitch for inbound traffic
- D. On a vSphere Standard Switch port group or the entire vSwitch for inbound and outbound traffic

Answer: A,B

Explanation:

QUESTION NO: 151

In a vSphere HA cluster, what is the maximum number of point-to-point communication links to the

slaves does each master maintain?

- A. 32
- B. 64
- C. 512
- D. 1024

Answer: A

Explanation:

QUESTION NO: 152

During peak operating hours, an administrator finds that a business-critical application running in a virtual machine is not performing as well as during normal hours.

Which memory management method can be used to guarantee that the application performs well at all times?

- A. Set a reservation equal to the average memory utilization of the virtual machine running the application.
- B. Set the share level to high for the virtual machine running the application and set the share level for all other virtual machines to low.
- C. Check the Reserve all guest memory checkbox.
- D. Set a reservation equal to the installed memory of the ESXi host running the application.

Answer: C

Explanation:

QUESTION NO: 153

A vSphere environment is created with two virtual machines, VM23 and VM43. Each virtual machine has an instance of the front-end web application for the company's manufacturing management database. A physical load-balancer is configured for the application.

Which type of DRS rule should be implemented for VM23 and VM43?

- A. Separate Virtual Machines
- B. Virtual Machines to Hosts
- C. Host DRS Groups

D. Keep Virtual Machines Together

Answer: A

Explanation:

QUESTION NO: 154

Which three services will continue to function when vCenter Server is unavailable? (Choose three.)

- A. Storage DRS
- B. Fault Tolerance (FT)
- C. vMotion
- D. Thin Provisioning
- E. High Availability

Answer: B,D,E

Explanation:

QUESTION NO: 155

A request has been made to the SAN administrator to provision a new LUN. A LUN (LUN 6) is created, and the SAN administrator presents the LUN to an ESXi 5.x host, using the storage array SAN management software. The administrator looks at the Storage configuration for the ESXi host, and does not see the new LUN. Other LUNs from the same storage array are visible.

Which two conditions are most likely to cause the error described? (Choose two.)

- A. The administrator has not performed a Rescan All on the ESXi host.
- B. The multipathing policy has been set to Fixed for the LUN.
- C. Zoning on the Fibre Channel switches is not configured correctly.
- D. The LUN was not presented to the correct ESXi host.

Answer: A,D

Explanation:

QUESTION NO: 156

A database administrator has reported periodic poor performance on a particular virtual machine.

The virtual machine administrator has noticed a significant drop in performance when utilized memory exceeds 1GB.

What does this indicate and what could be checked next?

- A.** The application problems are definitely due to a non-memory-related problem. CPU affinity settings should be checked for this virtual machine.
- B.** The application problems are definitely due to a non-memory-related problem. CPU utilization should be checked next, using Windows Task Manager.
- C.** The virtual machine might not have physical memory available. Compression and swap activity on the ESXi host should be checked next.
- D.** The virtual machine might not have physical memory available. Ensure the memory limit on the VM is set to 0 MB.

Answer: C

Explanation:

QUESTION NO: 157

What would be a valid reason to enable traffic shaping?

- A.** Limiting the bandwidth of a FTP server
- B.** Restricting the load on a IDS server
- C.** Limiting the bandwidth used by an independent hardware iSCSI adapter
- D.** Improving the performance of a CPU-intensive application server

Answer: A

Explanation:

QUESTION NO: 158

Users have reported performance issues with an application running on a Windows VM. Performance analysis shows high CPU activity on the ESXi host but low CPU activity on the Windows VM.

A high value in which overview graph and counter on the virtual machine's Performance tab would confirm the results of the performance analysis?

- A.** CPU (%) / Wait

- B. CPU Usage (Mhz) / Wait
- C. CPU Usage (Mhz) / Ready
- D. CPU (%) / Ready

Answer: D

Explanation:

QUESTION NO: 159

Which option could be used for vSphere HA heartbeats?

- A. An iSCSI LUN used for booting the master ESXi host.
- B. An iSCSI LUN backing an RDM connected over 10GB Ethernet
- C. An NFS datastore shared with the all hosts, sync, no_root_squash and read only options
- D. A Fibre Channel LUN on an 8GB active/active array backing a VMFS5 datastore

Answer: D

Explanation:

QUESTION NO: 160

The performance graph for a virtual machine with 1GB of RAM shows the Swap In rate to be 150 MBps and the Balloon value to be at 0 MB. Users of the virtual machine are complaining that performance is slow.

Which two actions could increase performance of the virtual machine? (Choose two.)

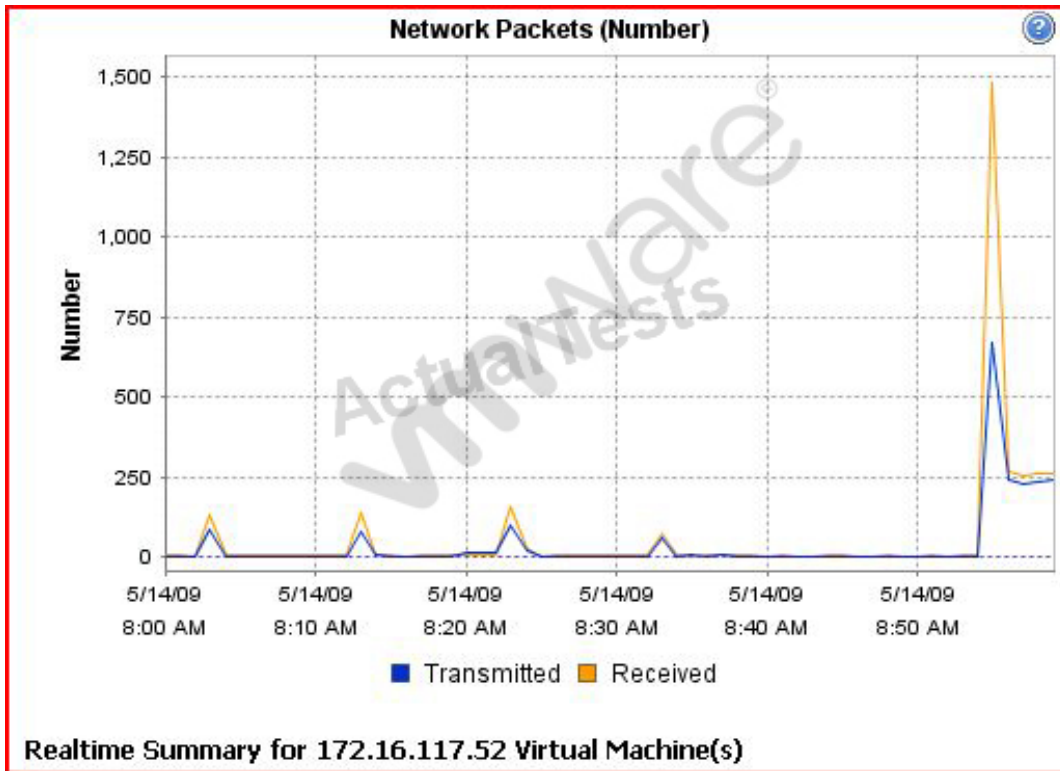
- A. Install the VMEMCTL driver on the ESXi host.
- B. Increase the memory share value for this virtual machine.
- C. Install VMware Tools into this virtual machine.
- D. Disable swapping in the virtual machine operating system.

Answer: B,C

Explanation:

QUESTION NO: 161

Click the Exhibit button.



An administrator has received reports of poor network performance with a virtual machine.

Which task will improve the network performance of this virtual machine?

- A. Adjust shares for the virtual NIC on the virtual machine.
- B. Traffic-shape this virtual machine.
- C. Move the virtual machine to another virtual switch.
- D. Add a CPU to the virtual machine.

Answer: C

Explanation:

QUESTION NO: 162

Which two components can be installed in monitored virtual machines to trigger vSphere HA Application Monitoring? (Choose two.)

- A. A custom script utilizing the appmonitor executable
- B. The vSphere Fault Tolerant agent
- C. Third-party utilities such as Neverfail or ApplicationHA
- D. The vSphere HA application agent

Answer: A,C

Explanation:

QUESTION NO: 163

What are two considerations when using resource pools in a vSphere cluster? (Choose two.)

- A. Default shares are equal for all sibling resource pools, regardless of virtual machines or child pools
- B. By default, Reservations can be exceeded
- C. vMotion must be setup prior to creating Resource Pools
- D. DRS rules cannot violate Resource Pool membership

Answer: A,B

Explanation:

QUESTION NO: 164

A vSphere 5.x implementation contains two ESXi hosts, ESXi01 and ESXi02. There is a virtual machine "VM21" connected to the Production port group on ESXi01.

ESXi01 has the following switch configuration.

vSwitch0, single uplink to 10.1.20.0/24

Production port group

VMkernel port for vMotion

VMKernel port for management

vSwitch1, single uplink to 10.1.40.0/24

Engineering port group

VMKernel port for NFS storage

ESXi02 has the following switch configuration.

vSwitch0, single uplink to 10.1.20.0/24

Engineering port group

VMkernel port for vMotion

VMKernel port for management

vSwitch1, single uplink to 10.1.40.0/24

Production port group

VMKernel port for NFS storage

Which two statements are true about this configuration? (Choose two.)

- A. vMotion is not available between the two hosts
- B. If VM21 is migrated to ESXi02 it will not be available on the network
- C. The virtual machine can be vMotion migrated to the target host.
- D. Broadcasts from the Production port group will not reach the Engineering port group.

Answer: B,D

Explanation:

QUESTION NO: 165

When comparing software iSCSI initiators with independent hardware initiators, what are the additional CHAP security levels available for a software implementation? (Choose two.)

- A. Do not use CHAP unless required by target
- B. Use CHAP
- C. Use CHAP unless prohibited by target
- D. Do not use CHAP

Answer: A,B

Explanation:

QUESTION NO: 166

The storage administrator is preparing an action plan to upgrade a Fibre Channel storage array.

The current plan will result in extended downtime for a VMFS LUN that is part of a SDRS cluster.

What steps can be taken in a vSphere 5.x environment to minimize the impact of the downtime? (Choose two.)

- A. Ensure there are multiple active paths to the LUN
- B. Ensure DRS is configured properly
- C. Use Storage vMotion to migrate the affected VMDKs
- D. Place the datastore into maintenance mode

Answer: C,D

Explanation:

QUESTION NO: 167

Which two types of information can be obtained about a VMFS datastore using the Summary tab for a connected host in the vSphere Client? (Choose two.)

- A. Multipathing status for the datastore
- B. Hardware Acceleration status
- C. Alarm Actions status for the datastore
- D. Runtime name of the datastore

Answer: B,C

Explanation:

QUESTION NO: 168

What are three reasons for deploying vCenter Server in a physical machine? (Choose three.)

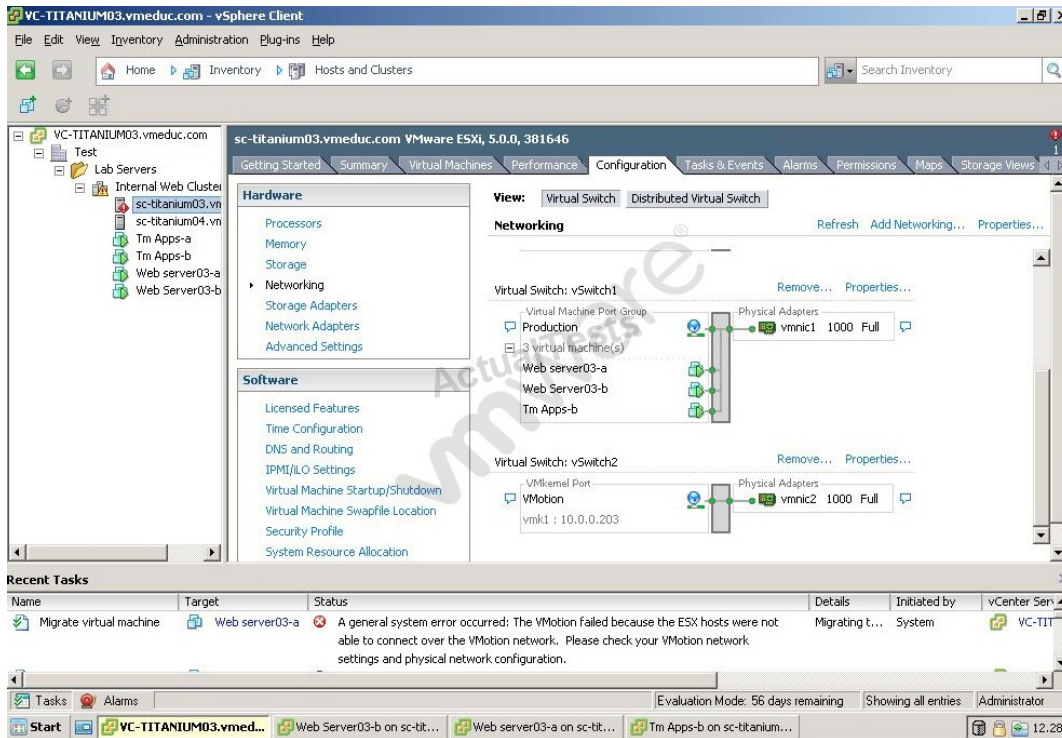
- A. vCenter Server can be deployed as physical machine to support a VSA configuration.
- B. vCenter Server can be deployed as a physical machine to ensure it is not susceptible to vSphere outages.
- C. vCenter Server can be deployed as a physical machine to improve VMware Data Recovery performance.
- D. vCenter Server can be deployed as a physical machine to improve vMotion performance.
- E. vCenter Server can be deployed as a physical machine to ensure it does not contend for resources.

Answer: A,B,E

Explanation:

QUESTION NO: 169

Click the Exhibit button.



An administrator has deployed a two-node cluster with HA and DRS enabled. DRS has been configured for fully automated mode. The management and vMotion interfaces have been configured on separate physical networks. Initial DRS testing on this cluster reveals that virtual machines are not being migrated despite great disparity in resource use between the ESX hosts in the cluster. The exhibit shows the error and the network configuration for one of the hosts.

Which task would successfully resolve this problem?

- A. Add a vmnic to the VMkernel port
- B. Configure the DRS Migration Threshold to Aggressive
- C. Connect the network cable to the correct physical network
- D. Migrate virtual machines manually using vMotion

Answer: C

Explanation:

QUESTION NO: 170

What are possible valid uses for the default No Access role in vCenter? (Choose two.)

- A. Restrict usage on a object for a member of a group assigned full permissions to the object
- B. Restrict access to sensitive VMs for helpdesk staff
- C. Restrict ESX Admins from managing specific hosts directly
- D. Restrict administrators from managing hosts via vCenter

Answer: B,D

Explanation:

QUESTION NO: 171

Two child resource pools exist for a DRS cluster.

The Production resource pool has been configured with a CPU reservation of 20GHz and a memory reservation of 20GB. The pool has 16 single-processor virtual machines and 4 dual-processor virtual machines. Each of these virtual machines has a CPU reservation of 1GHz and a memory reservation of 1GB.

The Development resource pool and it's virtual machines have been configured with no reservations. The pool has 1 single-processor virtual machine and 1 dual-processor virtual machine. CPU Shares are set to 4000 and Memory Shares are set to 163840.

The Production team members occasionally complain about the performance of their servers.

Which two options could be part of the plan to resolve the issue while minimizing the amount of resources reserved by the pool? (Choose two.)

- A. Increase the amount of CPU resources for the Production virtual machines to the processor speed of the host
- B. Set the CPU Shares of Production to 40000
- C. Double the CPU reservation on the Production virtual machines and pool
- D. Set the Memory Shares of Production to 20480

Answer: B,C

Explanation:

QUESTION NO: 172

A user wants to receive an email notification when the virtual machine CPU usage enters a

warning state and again when the condition enters a alarm state. Which two state changes must be selected to receive the appropriate notifications? (Choose two.)

- A. Yellow-red state change
- B. Red-green state change
- C. Yellow-green state change
- D. Green-yellow state change

Answer: A,D

Explanation:

QUESTION NO: 173

An administrator has just completed an update of an ESXi 5.x host. Prior to the upgrade, a backup of the host configuration was performed. After the upgrade, the backup was restored to the upgraded host. Shortly after the upgrade was completed, the administrator receives complaints that users are unable to power on virtual machines.

What are the two most likely reasons that VMs cannot power up on this host? (Choose two.)

- A. The update reset the virtual machine reservations.
- B. It has been more than 60 days since the host was originally installed.
- C. Backup and restore does not include licensing.
- D. The backup was performed prior to a license key being applied.

Answer: B,D

Explanation:

QUESTION NO: 174

Which memory conservation technique collaborates with the server to reclaim pages that are redundant in a virtual machine or virtual machines?

- A. Memory Balloon Driver
- B. Transparent Page Sharing
- C. Redundant Memory Driver
- D. VMkernel Swap

Answer: B

Explanation:

QUESTION NO: 175

What are two reasons creating a host profile could fail? (Choose two.)

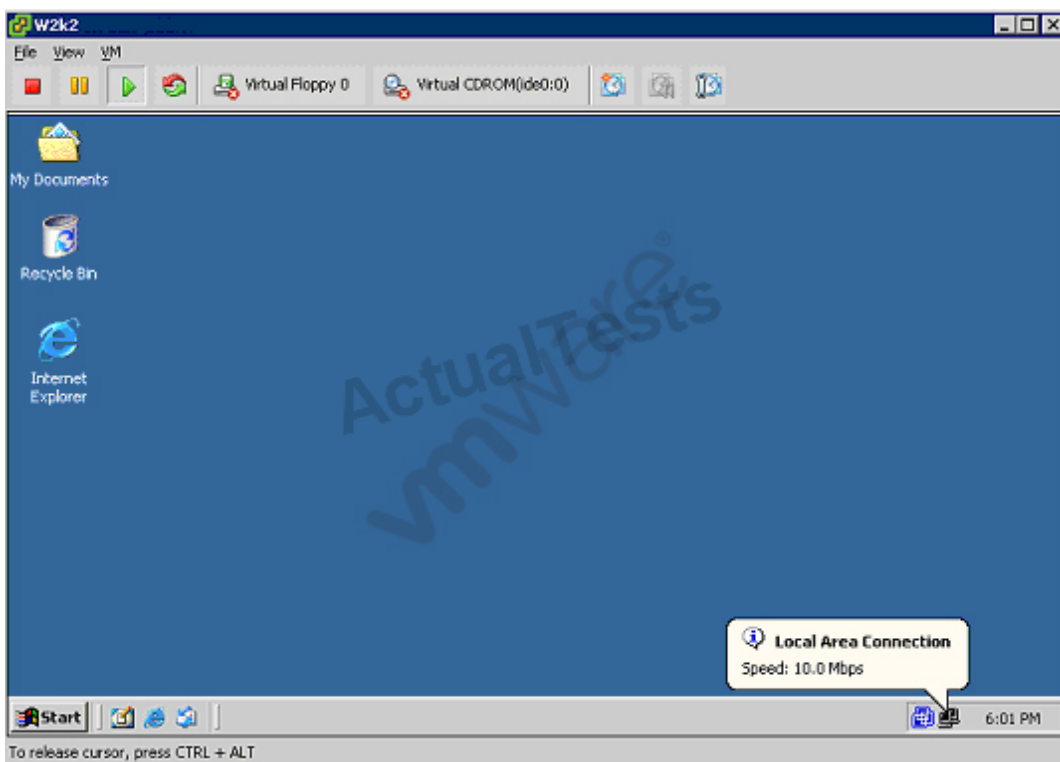
- A. Selecting a VMware Infrastructure 3.5 host
- B. The host selected is currently in maintenance mode
- C. Special characters were used when naming vSphere objects
- D. Evaluation Licenses are being used

Answer: A,C

Explanation:

QUESTION NO: 176

Click the Exhibit button.



Which statement is true about the network performance of the virtual machine in the exhibit?

- A. The virtual machine can send at the maximum of 10Mbps.
- B. The virtual machine can send traffic as fast as the underlying virtual switch allows.

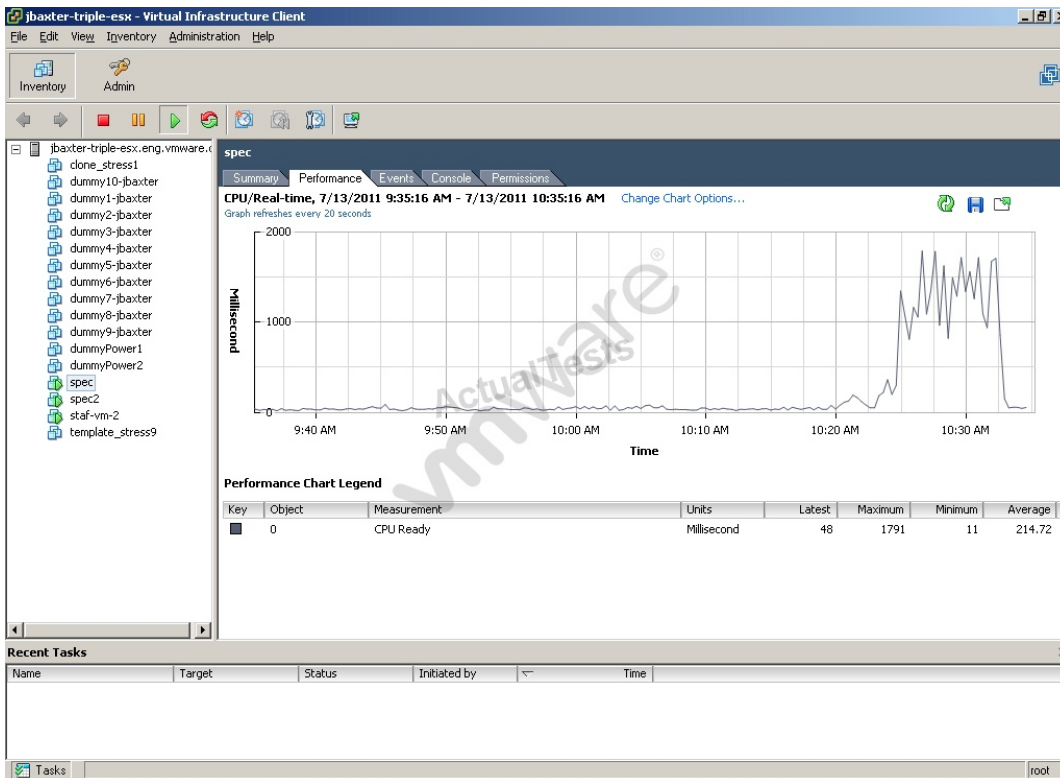
- C. Virtual switch autonegotiation settings must to be adjusted to improve performance.
- D. The underlying physical NIC is configured for 10Mbps.

Answer: B

Explanation:

QUESTION NO: 177

Click the Exhibit button.



Which change will eliminate the symptom in the performance chart shown in the exhibit?

- A. Set CPU shares to High
- B. Set CPU affinity for the virtual machine
- C. Migrate the VM to a host that is less utilized
- D. Add a CPU to the virtual machine

Answer: D

Explanation:

QUESTION NO: 178

vCenter Server is running in a virtual machine that is part of a vSphere DRS cluster. The vCenter Server virtual machine has been tested and can successfully migrate with vMotion between all ESXi hosts in the cluster. DRS is configured for partial automation.

What happens if an ESXi 5.x host that is running the vCenter Server virtual machine experiences a power outage?

- A. All DRS cluster operations will be unavailable until the failed ESXi host is brought back online.
- B. vCenter Server will remain offline, but all virtual machines on the remaining hosts will continue without interruption.
- C. This situation cannot occur, because vCenter Server cannot be installed on a virtual machine in a vSphere DRS cluster.
- D. vSphere will restart the vCenter Server virtual machine on another host.

Answer: B

Explanation:

QUESTION NO: 179

How can vCenter maps be used outside of the vSphere client? (Choose two.)

- A. Saved to a Visio .vsd file
- B. Sent to a printer
- C. Exported as a jpg
- D. Saved as a PDF

Answer: B,C

Explanation:

QUESTION NO: 180

Which two VMware software components can be updated by Update Manager? (Choose two.)

- A. ESX 3.5
- B. Virtual Appliances
- C. vCenter Server
- D. Guest OS

Answer: A,B

Explanation:

QUESTION NO: 181

Which network settings are only available with vSphere Distributed Switches?

- A. Jumbo Frames
- B. PVLAN
- C. Load Balancing
- D. Promiscuous Mode

Answer: B

Explanation:

QUESTION NO: 182

An administrator is configuring an ESXi 5.x host with two dual-port Fibre Channel (FC) HBAs. The FC storage array has four active storage processor ports. Zoning is configured on both fabrics, with ESXi HBA ports and the array ports in the same zone. There are two LUNs with VMFS datastores configured.

Using Round Robin multipathing, what is the maximum number of paths that can be used to send data to the VMFS datastores at any given time?

- A. 2
- B. 3
- C. 1
- D. 4

Answer: A

Explanation:

QUESTION NO: 183

Which two statements are true regarding a mixed DRS cluster with Intel-based and AMD-based ESXi 5.x hosts? (Choose two.)

- A. DRS can load-balance running virtual machines, assuming multiple hosts per CPU family.
- B. HA can only failover virtual machines to hosts within the same CPU family.
- C. Cold Migration may be needed to balance the performance load on the cluster
- D. Storage vMotion will not be available for this cluster

Answer: A,C

Explanation:

QUESTION NO: 184

Which two vCenter plug-ins are installed with a default vSphere Client installation? (Choose two.)

- A. vCenter Hardware Status
- B. VMware ESXi Service Status
- C. VMware vSphere Update Manager
- D. VMware vCenter Storage Monitoring Service

Answer: A,D

Explanation:

QUESTION NO: 185

An administrator has two ESXi 5.x hosts. Each host has two resource pools, Production and Test and a vApp named TestvApp01. What is true when these hosts are added to a DRS cluster?

- A. An option is given during the process to graft the pools under the cluster's root pool, the vApp will be removed.
- B. An option is given during the process to graft the pools and vApp under the cluster's root pool.
- C. The resource pools and vApp are automatically grafted into the cluster under the root pool.
- D. The resource pools and vApp are automatically removed when the host is added.

Answer: A

Explanation:

QUESTION NO: 186

A user has permissions to create and manage alarms and tasks for a group of virtual machines.

What happens if an administrator modifies permissions for the user so that they can no longer

manage alarms?

- A. The user can no longer create alarms, but can modify or delete the existing alarms.
- B. The user can create alarms but can no longer modify or delete alarms.
- C. The user can no longer create, modify or delete alarms.
- D. The Alarms tab is dimmed in the vSphere Client and no alarm-related actions may be taken by the user.

Answer: B

Explanation:

QUESTION NO: 187

When would an administrator configure the Explicit Failover option for a portgroup created on a virtual switch with multiple uplinks?

- A. To manually configure load balancing for the portgroup
- B. To share uplinks between vSwitches
- C. When configuring iSCSI Software Initiator multipathing
- D. If the physical switch does not support etherchannel or 802.3ad

Answer: C

Explanation:

QUESTION NO: 188

Which two actions can be scheduled through the Scheduled Task wizard in the vSphere Client?
(Choose two.)

- A. Remove a host.
- B. Change the VM power state.
- C. Create a virtual machine.
- D. Revert to a snapshot of a virtual machine.

Answer: B,C

Explanation:

QUESTION NO: 189

Which three features can be used in combination with network-attached storage (NAS)? (Choose three.)

- A. Datastores up to 64TB
- B. virtual-mode RDMS
- C. N-Port ID Virtualization
- D. Storage I/O control
- E. VMware Storage DRS

Answer: A,D,E

Explanation:

QUESTION NO: 190

What are two reasons why a company would choose to use ESXi 5.x instead of using VMware Workstation 8? (Choose two.)

- A. The company needs to be able to assign existing physical disks to virtual machines.
- B. The company needs remote management of virtual machines
- C. The company needs support for virtual machines with up to sixteen vCPUs
- D. The company wants the lowest overhead possible for the virtual infrastructure.

Answer: C,D

Explanation:

QUESTION NO: 191

Which three files are valid virtual machine files that might be identified when examining a folder that contains a virtual machine template on a VMFS datastore? (Choose three.)

- A. RDM map file (-rdm.vmdk)
- B. BIOS settings file (.bios)
- C. Template file (.vmtx)
- D. Lock file (.lck)
- E. Suspended state file (.vmsn)

Answer: A,C,E

Explanation:

QUESTION NO: 192

While building a VMware View environment one of the design requirements is keeping vCenter and View Composer always available. Which solution can be utilized to achieve this?

- A. vCenter Server Heartbeat
- B. vSphere HA
- C. vSphere FT
- D. Host Based Replication

Answer: A

Explanation:

QUESTION NO: 193

What happens to the total number of shares available to the children of a resource pool if a virtual machine is powered off inside the resource pool?

- A. It remains the same
- B. It decreases
- C. It increases
- D. It remains the same only if a custom share value was configured

Answer: B

Explanation:

QUESTION NO: 194

An administrator is configuring admission control settings for a vSphere HA cluster. The administrator selects the option Allow VMs to Be Powered on Even if They Violate Availability Constraints. Which two events occur during an ESXi host failure? (Choose two.)

- A. Virtual machines with a High restart priority are restarted first.
- B. Virtual machines with a Low restart priority are not restarted.
- C. HA will not restart virtual machines configured for FT.
- D. Virtual machines with VM Monitoring set to Enabled are restarted.

Answer: A,C

Explanation:

QUESTION NO: 195

What are three true statements about an integrity check in vCenter Data Recovery? (Choose three.)

- A. The operation is prevented from overlapping with the backup operations.
- B. The operation is scheduled separately from the backup schedule.
- C. An incremental operation can be manually started.
- D. The operation automatically pauses when the end of the maintenance window is reached
- E. By default the operation does not run during normal business hours.

Answer: B,D,E

Explanation:

QUESTION NO: 196

A DRS cluster with two ESXi 5.x hosts is set to fully automated mode. One host in the cluster is running at 98% CPU utilization. The other host is running at 52% utilization. Upon analysis, it appears that none of the virtual machines are being migrated from the CPU-constrained host, and no recommendations are being generated.

What are the two most likely causes of the problem? (Choose two.)

- A. The VMkernel port is assigned an incorrect IP address.
- B. vMotion is not enabled on the VMkernel port.
- C. The DRS Migration Threshold is too aggressive.
- D. VMware DRS is not set to Fully Automated.

Answer: A,B

Explanation:

QUESTION NO: 197

An administrator is migrating a virtual machine in a DRS cluster. The migration fails the validation check because of a CPU incompatibility issue.

Which items below could be causing this issue? (Choose two.)

- A. Inconsistent CPU manufacturers
- B. Inconsistent CPU steppings
- C. Inconsistent CPU generations
- D. Inconsistent CPU GHZ

Answer: A,C

Explanation:

QUESTION NO: 198

Which two settings are required by the deployment wizard when installing the VMware vCenter Server Virtual Appliance (vCSA)? (Choose two.)

- A. Number of CPUs
- B. Datastore to install on
- C. Linked-mode
- D. Name of the vCenter server

Answer: B,D

Explanation:

QUESTION NO: 199

What options must be configured in the vCenter Server settings before email alerts can be sent? (Choose two.)

- A. Sender email address
- B. SNMP address information
- C. SMTP server information
- D. Email authentication information

Answer: A,C

Explanation:

QUESTION NO: 200

Which three modules are optional components that can be added from the vCenter Server installer? (Choose three.)

- A. VMware vCenter Syslog Collector
- B. VMware vCenter License Server
- C. VMware vSphere Authentication Proxy
- D. VMware vCenter Host Update Utility
- E. VMware vSphere Auto Deploy

Answer: A,C,E

Explanation:

Topic 3, Volume C

QUESTION NO: 201

What are two prerequisites for installing the vCenter Server application? (Choose two.)

- A. The system vCenter Server is installed on must be a physical machine.
- B. A valid vSphere vCenter license must be obtained before installation.
- C. vCenter must be in the same network as the hosts if supporting vSphere Storage Appliance Cluster.
- D. The system vCenter Server is installed on cannot be a domain controller.

Answer: C,D

Explanation:

QUESTION NO: 202

What are two valid use cases for vCenter Server Linked Mode? (Choose two.)

- A. An administrator wants to migrate running virtual machines between vCenter Server instances.
- B. An administrator wants to increase the vRAM entitlement pool.
- C. An administrator wants to manage a virtual server environment and a View environment from the same pane of glass.
- D. An administrator wants to search all inventory objects across multiple vCenter Server Virtual Appliance (vCSA) instances from one vSphere Client

Answer: B,C

Explanation:

QUESTION NO: 203

An administrator is deploying several ESXi 5.x hosts. Centralized logging with accurate

timestamps is a requirement for the deployment. Which two operations ensure these requirements are met? (Choose two.)

- A. Ensure TCP port 123 is not blocked
- B. Configure a syslog server on each host
- C. Configure ensure the hosts have the proper timezone configured
- D. Configure a syslog server on the vSphere Management Appliance

Answer: A,D

Explanation:

QUESTION NO: 204

An administrator is setting up vSphere Auto Deploy to deploy 25 ESXi 5.x hosts using the vCenter Server Virtual Appliance (vCSA). What would be considered best practices for Auto Deploy? (Choose three.)

- A. Enable vSphere HA on the cluster.
- B. Protect the vCenter server with Fault Tolerance.
- C. Install the Auto Deploy service on the VCSA.
- D. Include the vmware-fdm VIB in the image profile.
- E. Use PowerCLI to write a rule that assigns a custom image profile to the target hosts.

Answer: A,D,E

Explanation:

QUESTION NO: 205

Which tool defines the Image Profiles used with Auto Deploy?

- A. The vSphere PowerCLI add-deployrule cmdlet
- B. The vSphere PowerCLI new-deployrule cmdlet
- C. The vSphere CLI add-deployrule command
- D. The vSphere CLI new-deployrule command

Answer: B

Explanation:

QUESTION NO: 206

An administrator plans to deploy ESXi 5.x on a blade server containing no local disks.

What boot options are supported for use in place of local disks? (Choose three.)

- A. An SD card
- B. A NIC with iBFT
- C. Auto Deploy
- D. A server with IPMI or iLO
- E. A dedicated NFS share

Answer: A,B,C

Explanation:

QUESTION NO: 207

An administrator plans to use an upgrade script to upgrade a number of ESXi 5.x hosts.

What options are available for the kickstart file? (Choose two.)

- A. dryrun - Parse and check script but does not install
- B. overwritevmfs - permits overwriting of existing VMFS volumes
- C. vcenter - specifies vCenter Server
- D. autodeploy - defines autodeploy options

Answer: A,B

Explanation:

QUESTION NO: 208

An administrator has deployed a vCenter Server to manage a virtual environment.

The administrator has been asked to develop a plan for handling major upgrades to the application. What should be included in the upgrade plan?

- A. Utilize vCenter Configuration Manager to upgrade the vCenter Server in place
- B. Install a new vCenter Server and import the information from the existing vCenter Server
- C. Install a new vCenter Server over the existing vCenter Server as an in-place upgrade
- D. Utilize Update Manager to upgrade the vCenter Server in place

Answer: B

Explanation: Page 131 of vsphere-update-manager-50-install-administration-guide.pdf

NOTE

Update Manager 5.0 does not support virtual machine patch baselines.

If a host is connected to vCenter Server by using an IPv6 address, you cannot scan and remediate virtual machines and virtual appliances that run on the host.

Remediation of VMware vCenter Server Appliance is not supported. For more information about upgrading the virtual appliance, see the vCenter Server upgrade documentation.

Page 56 of vsphere-esxi-vcenter-server-50-upgrade-guide.pdf

Upgrade the VMware vCenter Server Appliance

Because the VMware vCenter Server Appliance was first released with vSphere 5.0, upgrading the appliance is not required until a future release. This information helps you plan for future upgrades.

Procedure

1. Deploy the new version of the vCenter Server Appliance. The new appliance has a default network configuration, and the vCenter Server service is unconfigured and disabled.
2. Connect to both the old and new appliances in separate browser windows.
3. In the Upgrade tab of the new appliance, select destination for the appliance role, and click Set role.
4. In the Upgrade tab of the old appliance, select source for the appliance role, and click Set role.
5. In each appliance, click Establish Trust. The local appliance key appears.
6. In the new appliance, copy the local appliance key.
7. Paste the local appliance key into the Remote appliance key field of the old appliance.
8. Click Import remote key in the old appliance.
9. In the old appliance, copy the local appliance key.
10. Paste the local appliance key into the Remote appliance key field of the new appliance.
11. Click Import remote key in the new appliance.
12. In the new appliance, click Import, and click Start import.

The new appliance shuts down the old appliance and assumes the network identity of the old appliance. This process can take several minutes. When the import is complete, the new vCenter Server Appliance starts.

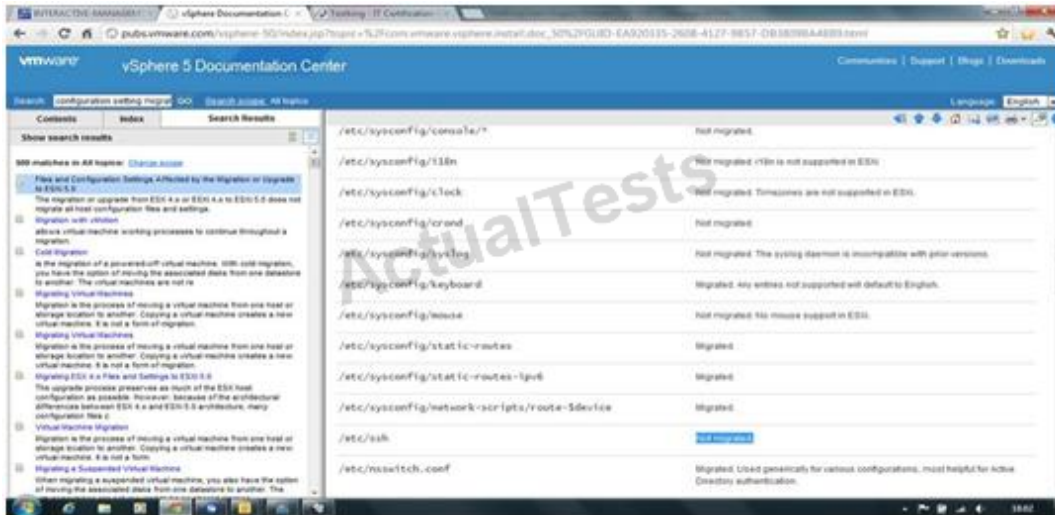
QUESTION NO: 209

Which three configuration settings will be migrated when upgrading a host from ESX 4.x Classic to ESXi 5.x? (Choose three.)

- A. The SSH configuration in /etc/ssh
- B. The host configuration in /etc/vmware/esx.conf
- C. The NFS configuration in /etc/fstab
- D. The services information in /etc/services
- E. The licensing information in /etc/licenses/license.conf

Answer: B,C,D

Explanation:



QUESTION NO: 210

An administrator is upgrading an ESXi 3.5 host to ESXi 5.x with an intermediate upgrade to 4.0 using Update Manager. The host has a single Intel Xeon processor, 4GB of RAM, and a VMFS datastore on a private, SAN-attached LUN. What might cause the upgrade to be unsuccessful?

- A. The ESXi host has 4GB RAM.
- B. The ESXi host has one processor.
- C. ESXi 3.5 is not supported for upgrade.
- D. Update Manager cannot upgrade a previously upgraded host.

Answer: B

Reference: http://pubs.vmware.com/vsphere-50/index.jsp?topic=%2Fcom.vmware.vsphere.upgrade.doc_50%2FGUID-AA106086-E10D-456E-B0B9-340D3D1462C3.html

QUESTION NO: 211

An administrator is performing an upgrade on an ESXi host.

Which step can be used to back up the host before the upgrade is performed?

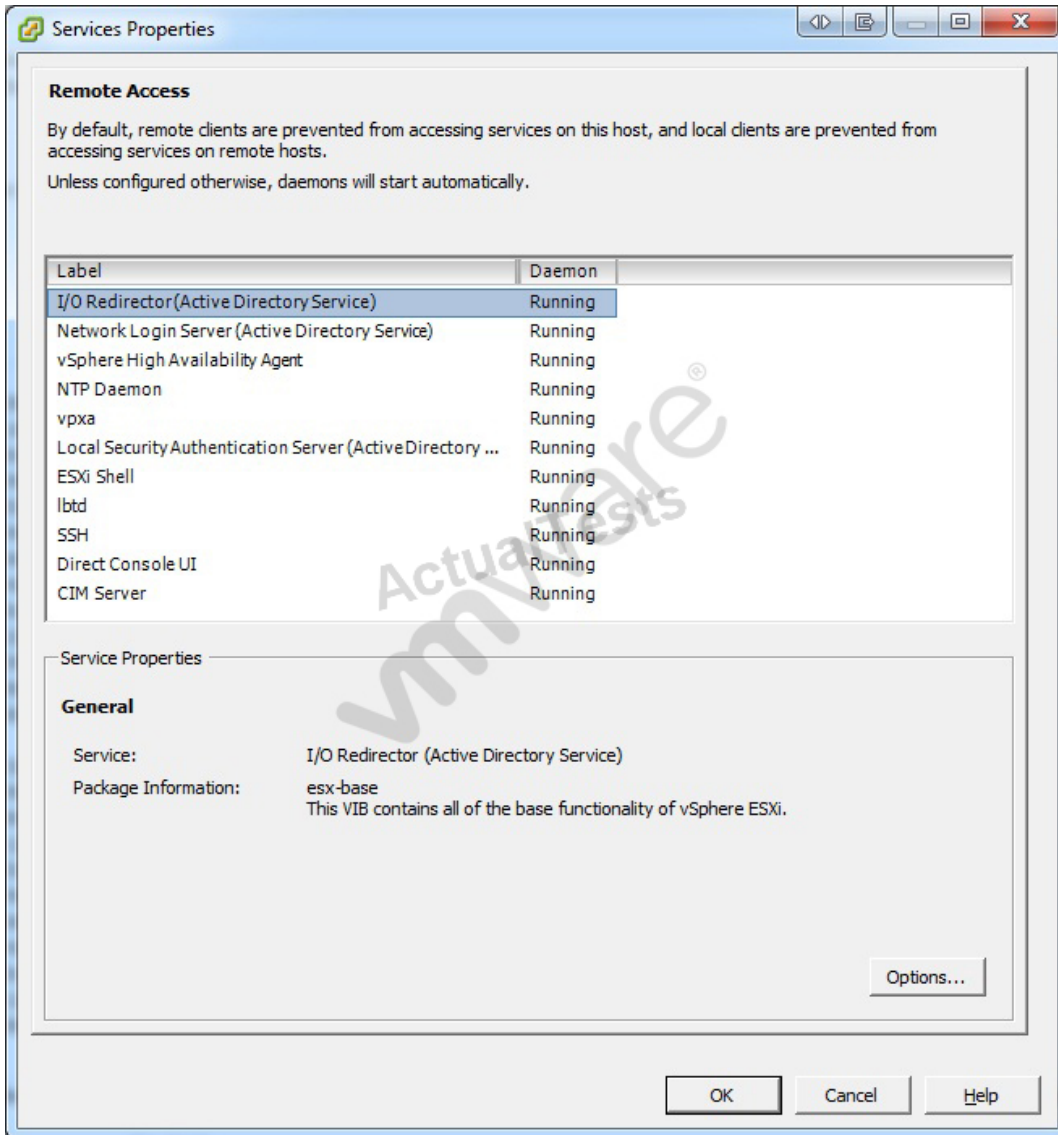
- A.** Using the vSphere Client connected to vCenter, right-click the host and choose Host Backup.
- B.** Log into a vMA appliance and run vicfg-cfgbackup to save the ESXi host configuration.
- C.** Using the vSphere Client connected directly to the host, right-click the host and choose Host Backup.
- D.** Use PowerCLI to run the host-backup cmdlet to save the ESXi host configuration.

Answer: B

Explanation:

QUESTION NO: 212

Click the Exhibit button.



10 ESXi 5.x hosts will be installed as part of a vSphere 5.x deployment. Security hardening is required as part of the installation. The current security profile is displayed in the exhibit.

Which three services shown in the exhibit are configured to run by default in a completed vSphere installation? (Choose three.)

- A. Network Login Server (Active Directory Service)
- B. SSH
- C. ESXi Shell
- D. Direct Console UI
- E. vpax

Answer: A,D,E

Explanation:

QUESTION NO: 213

For security reasons, an administrator removes a user from the Active Directory domain used by all ESXi hosts for authentication. At the time the user is removed they are actively logged into an ESXi 5.x host through the vSphere Client.

What is true regarding this scenario?

- A. The user immediately loses connectivity to and permissions on the host.
- B. The user retains permissions and connectivity to the host for up to 24 hours.
- C. The user retains permissions on the host until the host is rebooted.
- D. The user retains permissions on the object until the next time the user logs in to vCenter Server.

Answer: B

Explanation: <http://pubs.vmware.com/vsphere-50/topic/com.vmware.ICbase/PDF/vsphere-esxi-vcenter-server-50-security-guide.pdf>

QUESTION NO: 214

Acme Disposal Services is a large company which has many administrators. For auditing purposes, each administrator must use a unique account to access ESXi Standard hosts.

Which two actions satisfy this requirement and require the least amount of administrative effort? (Choose two.)

- A. Configure Authentication Services for Active Directory based authentication to the ESXi hosts
- B. Configure a unique root level account for each administrator using the vSphere Client
- C. Configure user accounts in a host profile, then apply the host profile to the ESXi hosts
- D. Configure Active Directory group ESX Admins with each administrator's AD account

Answer: A,D

Explanation:

QUESTION NO: 215

Which two features secure the VMkernel? (Choose two.)

- A. Memory Encryption

- B. Hardware assist virtualization
- C. Kernel module integrity
- D. Trusted Platform Module (TPM)

Answer: C,D

Explanation:

QUESTION NO: 216

What Windows security object is granted the vCenter Server administrator role during installation?

- A. Domain Admins
- B. Administrator
- C. Administrators
- D. ESX Admins

Answer: C

Explanation:

QUESTION NO: 217

An administrator attempts to increase the number of vCPUs in a virtual machine to 8. The configuration cannot be successfully completed.

What are two likely causes of this issue? (Choose two.)

- A. MS-DOS was selected as guest OS.
- B. The host has 4 processor threads.
- C. Virtual machine hardware version 7 was chosen.
- D. The vSphere 5.x implementation is using a Standard license.

Answer: A,B

Explanation:

QUESTION NO: 218

Which component is the metering tool for vCloud administration?

- A. VMware vCenter Chargeback
- B. VMware vCloud Service Manager
- C. VMware vCloud Request Manager
- D. VMware vCloud Director

Answer: A

Explanation:

QUESTION NO: 219

An existing vSphere 4 environment will be upgraded to vSphere 5.x. The current implementation utilizes ESXi 4.1 and the new implementation will use ESXi 5.x.

In which two ways will the new ESXi 5.x implementation differ from the ESXi 4.1 implementation? (Choose two.)

- A. VMware ESXi 5.x provides a host-based firewall.
- B. VMware ESXi 5.x can boot from additional local sources such as a USB drive.
- C. VMware ESXi 5.x can be managed from a web browser.
- D. VMware ESXi 5.x can support virtual machines with larger hard drive configurations.

Answer: B,D

Explanation:

QUESTION NO: 220

Which VMware solution allows for the automated discovery and mapping of applications running over the VM infrastructure?

- A. VMware vCloud Director
- B. VMware vCenter Infrastructure Navigator
- C. VMware Service Manager
- D. VMware vSphere 5

Answer: B

Explanation:

QUESTION NO: 221

Which two statements are true about VLANs and port groups defined on a vSphere Standard Switch? (Choose two.)

- A. A VLAN can be accessed by the entire virtual switch or individual port groups.
- B. Multiple port groups are restricted from accessing the same VLAN.
- C. VLANs can be configured only on individual port groups.
- D. Multiple VLANs can be accessed by virtual machines connected to one port group.

Answer: A,D

Explanation:

QUESTION NO: 222

A vSphere Standard Switch has been configured for IP-based load balancing using two uplinks. A new uplink is added to the vSwitch.

What is the status of the uplink by default?

- A. The uplink is placed in standby mode until it is added to the active NIC team.
- B. The uplink is marked as active but does not participate in the active NIC team until assigned to a port group.
- C. The uplink is marked as active, but cannot be used by the active NIC team until it is added to the existing 802.3ad group on the physical switch.
- D. The uplink is marked as unused until it is added to the active NIC team.

Answer: C

Explanation:

QUESTION NO: 223

Which two statements are true regarding vSphere virtual switch uplinks? (Choose two.)

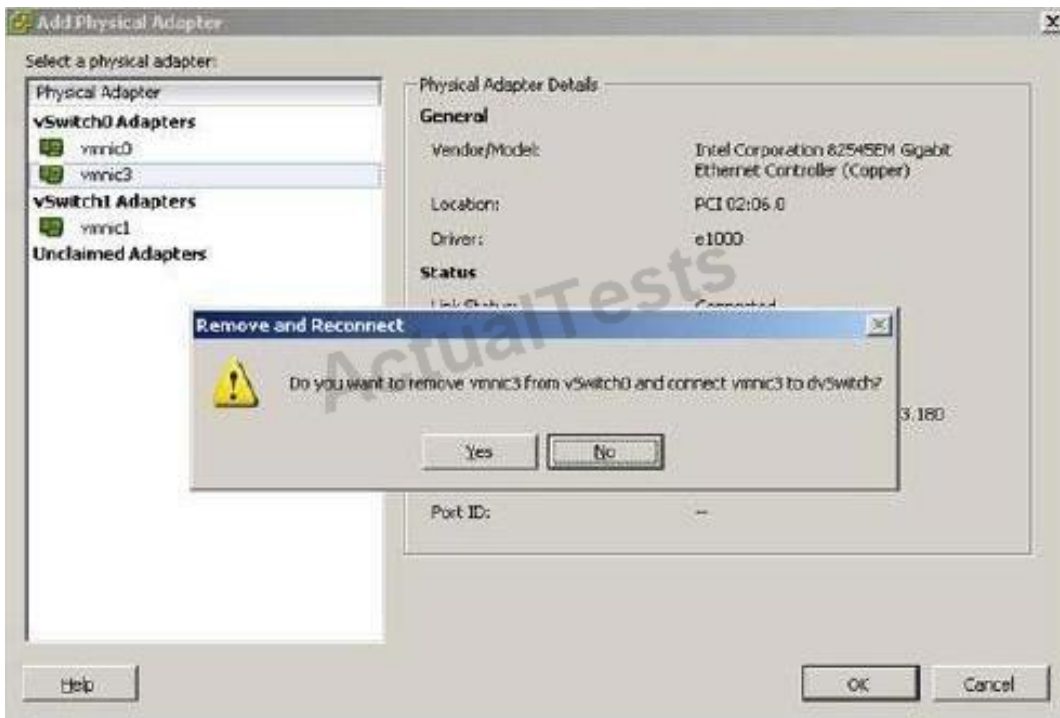
- A. vSphere virtual switches do not need to be configured with an uplink.
- B. Multiple vSphere virtual switches can be configured to use the same uplink.
- C. vSphere virtual switches must be configured with at least one uplink.
- D. Multiple vSphere virtual switches cannot be configured to use the same uplink.

Answer: A,D

Explanation:

VMware Virtual Networking Concepts, page 6. Some virtual switches should not connect to a

physical network and thus have no uplink port. If you attempt to assign an uplink port, (previously assigned to a switch), to a second switch, the uplink will be disconnected from the first switch before being connected to the second.



QUESTION NO: 224

A virtual machine, VM21, will be migrated between two ESXi 5.x hosts, labeled ESXi01 and ESXi02. Each host has two vSphere Standard Switches (vSS), configured as follows:

1. vSwitch0 has a portgroup labeled Management and a portgroup labeled vMotion.
2. The Management portgroup contains a vmkernel port tagged for management traffic.
3. The vMotion portgroup contains a vmkernel port tagged for vMotion traffic.
4. vSwitch0 on ESXi01 has a single uplink attached to the 10.1.20.0/24 network.
5. vSwitch0 on ESXi02 has a single uplink attached to the 10.1.20.0/24 network.
6. Each host has a vSwitch1 with a Production portgroup used by virtual machine traffic.
7. Each vSwitch1 has an uplink attached to the 10.1.40.0/24 network.

What is true about migrating VM21 to the new host?

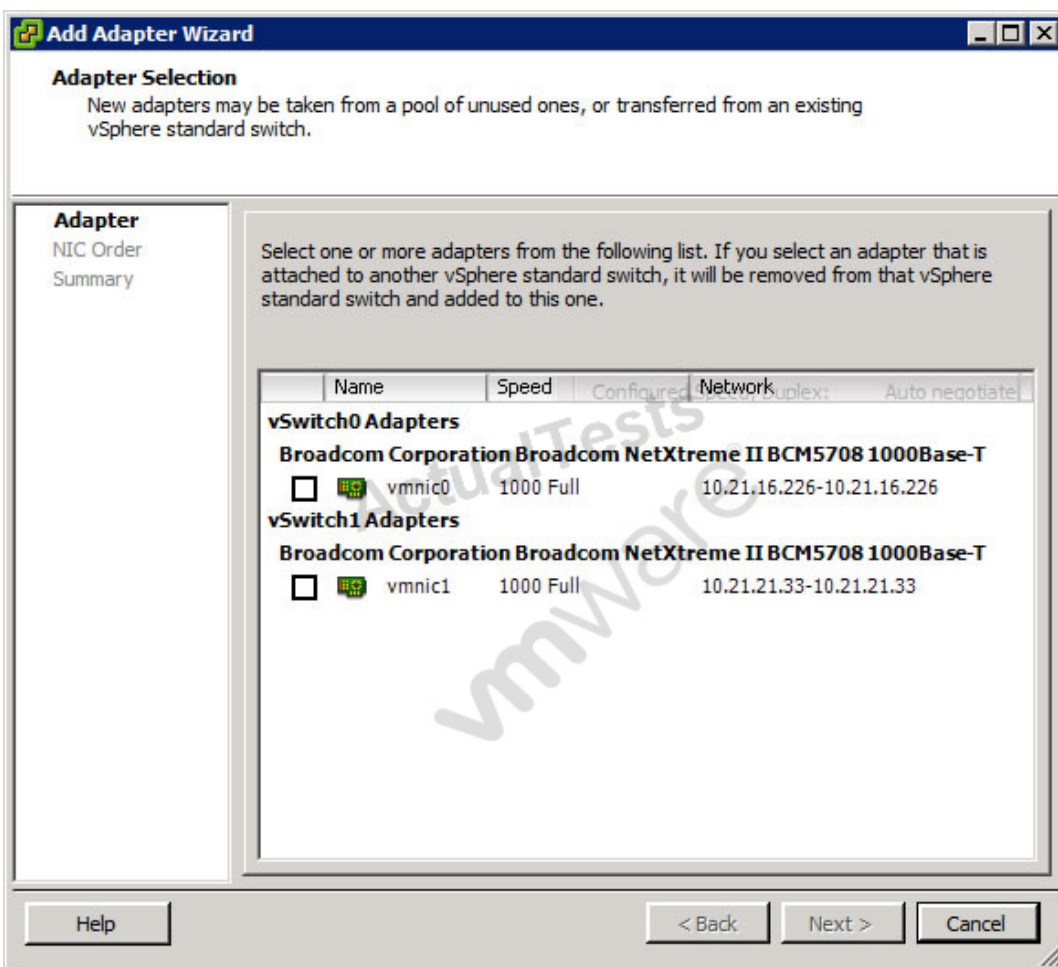
- A. vMotion would be supported in this configuration.
- B. Storage vMotion would not be supported in this configuration.
- C. vMotion would not be supported in this configuration.
- D. Storage vMotion would be supported if the storage device supports VAAI.

Answer: A

Explanation:

QUESTION NO: 225

Click the Exhibit button.



An administrator has been tasked with adding a newly installed uplink to vSwitch1.

Based on the exhibit, what is a true statement about this environment?

- A. The server does not have available vSwitches to be assigned to this uplink.
- B. The available uplinks are not compatible with a standard vSwitch.
- C. The host needs a driver installed for the newly installed uplink.

D. The current uplinks cannot be attached because they are in use by other port groups.

Answer: C

Explanation:

QUESTION NO: 226

Which settings are required for virtual machine guest tagging for VLAN 100 in a vSphere 5.x environment?

- A. Port Group configured for VLAN 100, physical switch configured as a VLAN trunk
- B. Port Group configured for VLAN 4095, physical switch configured as a VLAN trunk
- C. Port Group configured for VLAN 100, physical switch configured for VLAN 100
- D. Port Group configured for VLAN 4095, physical switch configured for VLAN 100

Answer: B

Explanation:

QUESTION NO: 227

When you are configuring the NIC teaming policy for a vSwitch, what happens when the Failback option is set to Yes?

- A. A failed uplink will be left inactive upon recovery until another uplink fails.
- B. The physical switches are notified when a failover event occurs.
- C. The physical switches are notified when a failback event occurs.
- D. A failed uplink is returned to active duty immediately upon recovery.

Answer: D

Explanation:

QUESTION NO: 228

Which three features are only available in the vSphere Client when using a vSphere Distributed Switch? (Choose three.)

- A. Port Mirroring
- B. PVLAN tagging

- C. Storage I/O Control
- D. Ingress Traffic Shaping
- E. 802.1q VLAN Tagging

Answer: A,B,D

Explanation:

QUESTION NO: 229

What are three methods of adding virtual machine networking to a vSphere Distributed Switch? (Choose three.)

- A. A portgroup can be created using the vSphere client and virtual machines can be added using their Properties tab.
- B. A portgroup can be created as part of the Migrate Virtual Machine Networking wizard before virtual machines are moved to the vDS.
- C. A portgroup can be cloned from a vSphere Standard Switch, inheriting the virtual machines that were attached to the cloned portgroup.
- D. A portgroup can be created using the vSphere client and virtual machines can be migrated using the Migrate Virtual Machine Networking wizard.
- E. A portgroup can be created during the creation of the vDS and virtual machines can be migrated using the Migrate Virtual Machine Networking wizard.

Answer: A,D,E

Explanation:

QUESTION NO: 230

What are two network load-balancing policies for a vSphere Distributed Switch? (Choose two.)

- A. Route based on source MAC hash
- B. Route using physical NIC load
- C. Route based on the destination virtual port ID
- D. Route based on port ID hash

Answer: A,B

Explanation:

QUESTION NO: 231

Which type of port on a secondary private VLAN can communicate with promiscuous ports and other ports that share its VLAN tag?

- A. Isolated
- B. Promiscuous
- C. Community
- D. Trunked

Answer: C

Explanation:

QUESTION NO: 232

Which methods can be used to migrate a VMkernel port from a vSphere Standard Switch to a vSphere Distributed Switch? (Choose two.)

- A. Use the Add Virtual Adapter wizard from the Manage Virtual Adapters window.
- B. Use the Manage Hosts wizard from the Configuration tab of the vDS.
- C. Use the Migrate Virtual Machine Networking option to select the port from a list.
- D. Edit the Network Adapter settings for the port and select a dvPort group from the list.

Answer: A,B

Explanation:

QUESTION NO: 233

Which statement describes the functionality of traffic shaping on a vSphere Standard Switch?

- A. vSphere Standard Switches support only egress traffic shaping.
- B. vSphere Standard Switches support both ingress and egress traffic shaping.
- C. vSphere Standard Switches support best-effort traffic shaping based on quality of service (QoS).
- D. vSphere Standard Switches support only ingress traffic shaping.

Answer: A

Explanation: A traffic shaping policy is defined by average bandwidth, peak bandwidth, and burst size. You can establish a traffic shaping policy for each port group and each distributed port or distributed port group.

ESXi shapes outbound network traffic on standard switches and inbound and outbound traffic on distributed switches. Traffic shaping restricts the network bandwidth available on a port, but can also be configured to allow bursts of traffic to flow through at higher speeds.

QUESTION NO: 234

Which vSwitch or vSwitch port group policy setting allows packets to be received by a virtual machine with different destination MAC addresses than the configured MAC address?

- A. Promiscuous mode
- B. Traffic shaping
- C. Forged transmits
- D. MAC address changes

Answer: D

Explanation:

QUESTION NO: 235

What failure will beacon probing identify in vSphere networking?

- A. An improper VLAN configuration on a physical switch port
- B. A disconnected network cable
- C. A VMkernel IP mismatch affecting vMotion or HA traffic
- D. Jumbo frames improperly configured on an iSCSI target

Answer: A

Explanation:

QUESTION NO: 236

An administrator is creating a vSphere Standard Switch with virtual machine and VMkernel networking. The administrator has two uplinks attached to the switch and wants to make sure multiple sessions for a virtual machine can utilize both uplinks.

Which load-balancing policy will guarantee this requirement is met, even if additional management or virtual machine traffic is added to the switch in the future?

- A. Route based on IP hash
- B. Route based on source MAC hash
- C. Route based on the originating port ID
- D. Use explicit failover.

Answer: A

Explanation:

QUESTION NO: 237

An administrator wants to determine the current network adapter configuration for an uplink on an ESXi 5.x host.

Which three items can be viewed from the Network Adapters section of the Configuration tab, using the vSphere Client? (Choose three.)

- A. VLAN configuration
- B. Adapter Driver
- C. Actual speed and duplex
- D. Adapter Name
- E. vSwitch configuration

Answer: C,D,E

Explanation: <http://www.vmguru.nl/wordpress/wp-content/uploads/2010/03/networkcards-config-check.jpg>

QUESTION NO: 238

Which two storage adapters require no VMkernel ports? (Choose two.)

- A. Independent Hardware iSCSI Adapter
- B. iSCSI Software Adapter
- C. Dependent iSCSI Adapter
- D. Fibre Channel HBA

Answer: A,D

Explanation:

QUESTION NO: 239

When a virtual machine interacts with persistent thick virtual disks stored on a traditional Fibre Channel storage array, which two actions are always taken by the VMkernel? (Choose two.)

- A. The file corresponding to the virtual machine is located on the VMFS datastore using NPIV.
- B. Correlate the blocks requested by the virtual machine with the actual blocks on the array.
- C. Send the I/O request through the device driver to the physical HBA or software FCoE adapter.
- D. Place an atomic lock on the metadata database for the VMFS volume.

Answer: B,C

Explanation:

QUESTION NO: 240

Which options would reduce the load on the VMkernel when connecting to an iSCSI array? (Choose two.)

- A. Use an independent hardware iSCSI adapter
- B. Use a Converged Network Adapter
- C. Enable the software iSCSI adapter
- D. Use a dependent hardware iSCSI adapter

Answer: A,D

Explanation:

QUESTION NO: 241

ACME Tools has a vSphere 5.x deployment with an older iSCSI storage array. The administrator is considering adding an additional array which will include support for the vStorage APIs for Array Integration (VAAI).

Which two tasks would be completed in a reduced period of time if the new array was added? (Choose two.)

- A. creating VMFS datastores on the new array
- B. creating fault tolerant virtual machines on the new array
- C. migrating virtual machines using Storage vMotion between the arrays
- D. writes to thin provisioned virtual disks on the new array

Answer: B,D

Explanation:

QUESTION NO: 242

A vSphere 5.x environment has an ESXi 5.x host configured to boot from a hardware independent iSCSI adapter.

What is the expected outcome if the administrator attempts to disable the iSCSI HBA in the vSphere client?

- A. The adapter will be disabled, but is re-enabled the next time the host boots up.
- B. The adapter will be disabled and the host will not boot the next time the host boots up.
- C. A hardware independent iSCSI adapter cannot be disabled from the vSphere Client.
- D. The adapter will be enabled, but the host will boot into troubleshooting mode the next time the host boots up.

Answer: C

Explanation:

QUESTION NO: 243

How does a hardware FCoE Adapter appear to an ESXi host?

- A. As an uplink adapter attached to a vSphere Distributed Switch.
- B. As a hardware FCoE Adapter.
- C. As an enabled FCoE software initiator.
- D. As a Fibre Channel Adapter.

Answer: D

Explanation:

QUESTION NO: 244

What two statements are true about Fibre Channel zoning? (Choose two.)

- A. Zones define paths to a Fibre Channel array

- B. Zones control access to LUNs on a Fibre Channel storage array
- C. Zones can be soft or hard
- D. Zones can be configured on an array or ESXi host

Answer: A,C

Explanation:

QUESTION NO: 245

What are two requirements when configuring a Fibre Channel SAN with an ESXi 5.x cluster?
(Choose two.)

- A. RDMs must be zoned and masked to each ESXi 5 host in the cluster
- B. A FCP HBA or hardware supporting FCoE must be installed in the hosts
- C. Each LUN should contain only one NFS datastore.
- D. Each LUN must present a unique LUN ID to each ESXi hosts.

Answer: A,B

Explanation:

A: correct because yes, you have to Zone and mask to allow only the Hosts in that you want in.

Zoning has the following effects:

- Reduces the number of targets and LUNs presented to a host.
- Controls and isolates paths in a fabric.
- Can prevent non-ESXi systems from accessing a particular storage system, and from possibly destroying VMFS data.
- Can be used to separate different environments, for example, a test from a production environment.

B: correct because yes you need HBAs to connect to the FC.

C is obviously wrong as the FS is VMFS not NFS

D is wrong because: Page 37 of the vSphere storage guide says.

– For multipathing to work properly, each LUN must present the “same” LUN ID number to all ESXi hosts.

<http://pubs.vmware.com/vsphere-50/topic/com.vmware.ICbase/PDF/vsphere-esxi-vcenter-server->

50-storage-guide.pdf

QUESTION NO: 246

Where must the VMware vSphere Storage Appliance Manager (VSA Manager) be installed?

- A. On a Windows virtual machine created on the first VSA host
- B. The VSA Manager is deployed as a separate virtual appliance
- C. On a vCenter Server outside of the VSA environment
- D. It is pre-installed on the VMware vSphere Storage Appliance

Answer: C

Explanation:

QUESTION NO: 247

Using the vSphere Storage Appliance (VSA) Manager to view the Appliances Status column, what are three valid states? (Choose three.)

- A. Degraded
- B. Connected
- C. Maintenance
- D. Online
- E. Offline

Answer: A,D,E

Explanation:

QUESTION NO: 248

A virtual machine requires a 4TB disk for application data. The storage administrator has already created and presented a 4TB LUN to an ESXi 5.x host. The host is currently configured with a single 500GB VMFS5 datastore.

What is the next step the vSphere administrator must use to provision the data disk?

- A. Create a virtual compatibility mode RDM mapping to the 4TB LUN.
- B. Create a physical compatibility mode RDM mapping to the 4TB LUN.
- C. Expand the existing VMFS volume to 4TB. Create a physical compatibility mode RDM mapping to the 4TB LUN.
- D. Expand the existing VMFS volume to 4TB. Create a virtual compatibility mode RDM mapping to the 4TB LUN.

Answer: B

Explanation:

QUESTION NO: 249

Which two statements are true about shared storage capabilities on NFS datastores supported by ESXi 5.x? (Choose two.)

- A. You can create Fault Tolerant virtual machines
- B. You can mount up to 256 NFS datastores
- C. You can use VMware Storage APIs with all NFS datastores
- D. You can use Storage vMotion from a virtual-mode RDM

Answer: A,B

Explanation:

QUESTION NO: 250

A VMFS3 datastore has just been upgraded to VMFS5.

In what two ways does this affect the datastore? (Choose two.)

- A. The existing VMFS3 block size is retained.
- B. The block size will be changed to 8MB.
- C. Any existing VMDK can be expanded up to 2TB.
- D. VMDKs retain their size limit from the VMFS3 block size.

Answer: A,C

Explanation:

QUESTION NO: 251

When planning for an upgrade from vSphere4 to vSphere5 what will be the effect of upgrading a

1TB VMFS3 datastore with a 2MB block size to VMFS5?

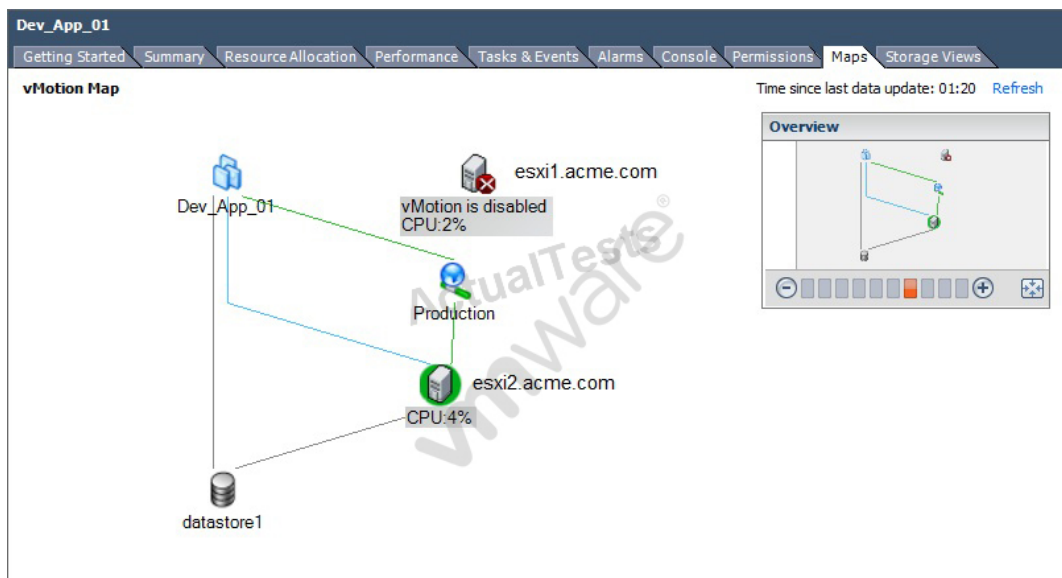
- A. Thick virtual disks can be expanded to a maximum of 2TB.
- B. Thick virtual disks can be expanded to a maximum of 512GB.
- C. Thin virtual disks can be expanded to a maximum of 512GB.
- D. Thin virtual disks can be expanded to a maximum of 2TB.

Answer: D

Explanation:

QUESTION NO: 252

Click the Exhibit button.



Based on the exhibit, what is the appropriate action to set a preferred path?

- A. Paths cannot be set to preferred on this array.
- B. Right-click the path you want to prefer and then select Preferred.
- C. Right-click the path you want to prefer then select Active.
- D. Double-click the new path you wish to prefer. The other existing paths will be set to Standby.

Answer: A

Explanation:

QUESTION NO: 253

Click the Exhibit button.

DGC Fibre Channel Disk (naa.6006016055711d00cff95e65664ee011) Manage Paths

Policy

Path Selection: Most Recently Used (VMware) Change

Storage Array Type: VMW_SATP_CX

Paths

Runtime Name	Target	LUN	Status	Preferred
vmhba1:CO:T0:L1	50:06:01:60:c1:e0:65:22 50:06:01:60:41:e0:65:22	1	Active (I/O)	
vmhba1:CO:T1:L1	50:06:01:60:c1:e0:65:22 50:06:01:68:41:e0:65:22	1	Stand by	
vmhba2:CO:T0:L1	50:06:01:60:c1:e0:65:22 50:06:01:61:41:e0:65:22	1	Active	
vmhba2:CO:T1:L1	50:06:01:60:c1:e0:65:22 50:06:01:69:41:e0:65:22	1	Stand by	

Refresh

Name: fc.2000001b321314a7:2100001b321314a7-fc.50060160c1e06522:5006016041e06522-naa.60060...

Runtime Name: vmhba1:CO:T0:L1

Fibre Channel

Adapter: 20:00:00:1b:32:13:14:a7 21:00:00:1b:32:13:14:a7

Target: 50:06:01:60:c1:e0:65:22 50:06:01:60:41:e0:65:22

Close Help

Based on the exhibit, what is the reason that two of the paths are marked as Stand by?

- A. The other two paths were set to Active.
- B. The path configuration is required by the attached storage array.
- C. The active paths were set to Preferred.
- D. The storage adapters need to be rescanned before the paths will be set to Active.

Answer: B

Explanation:

QUESTION NO: 254

What are two consequences of deleting a VMFS datastore from an ESXi 5.x host? (Choose two.)

- A. The datastore is inaccessible from all connected ESXi hosts.
- B. The datastore and all virtual machines are removed from the storage device.
- C. The datastore and all virtual machines remain on the storage device.
- D. The datastore is only removed from that specific ESXi host.

Answer: A,B

Explanation:

QUESTION NO: 255

What are two reasons to upgrade a virtual machine's hardware version? (Choose two.)

- A. Migrate a virtual machine from a VMFS3 datastore to a VMFS5 datastore.
- B. Add more than 4 NICs to a virtual machine.
- C. Add more than 8 vCPUs to a virtual machine.
- D. Increase the vRAM of the virtual machine to 512GB.

Answer: C,D

Explanation:

QUESTION NO: 256

The Typical option is selected while running the New Virtual Machine Wizard in the vSphere Client. Which three specific configuration options are included during virtual machine creation? (Choose three.)

- A. Datastore location
- B. Virtual machine version
- C. Number of vCPUs
- D. Storage DRS
- E. Virtual disk size

Answer: A,D,E

Explanation:**QUESTION NO: 257**

An administrator is creating a virtual machine that will be running Windows 2008 Enterprise (64-bit). The application to be installed in the virtual machine requires eight vCPUs to run effectively. During installation, the only available options are one, two, three, or four vCPUs.

What condition explains the available vCPU selections?

- A. The virtual machine hardware version is 8.
- B. The guest operating system for the virtual machine is 64-bit.
- C. The ESXi host has two non hyperthreaded dual-core CPUs.
- D. The ESXi host has two hyperthreaded dual-core CPUs.

Answer: C

Explanation:

QUESTION NO: 258

Windows virtual machines use a page file and Linux virtual machines use a swap partition for virtual memory. When you are determining the appropriate size for these, which file is affected?

- A. The .vmx file
- B. The .vswp file
- C. The service console swap partition
- D. The virtual disk size

Answer: D

Explanation:

QUESTION NO: 259

The page file for a Windows guest operating system or the swap partition for a Linux guest operating system is created by.

- A. the ESXi host

- B. the guest operating system
- C. vCenter server
- D. the VMFS datastore

Answer: B

Explanation:

QUESTION NO: 260

What is the size of a virtual machine .vswp file?

- A. The virtual machine .vswp file is equal to twice the amount of available memory configured for the virtual machine when it was created.
- B. The virtual machine .vswp file is equal to the amount of virtual memory (virtual machine available memory, plus virtual machine overhead) configured for the virtual machine when it was created.
- C. The virtual machine .vswp file is set to the amount of memory allocated minus any memory reservation.
- D. The virtual machine .vswp file is equal to the amount of available memory in the ESXi server.

Answer: C

Explanation:

QUESTION NO: 261

An administrator is installing a Windows Server 2008 operating system into a virtual machine on an ESXi 5.x host. What are two valid SCSI adaptors for this installation? (Choose two.)

- A. Paravirtual SCSI
- B. LSI Logic SAS
- C. BusLogic SAS
- D. Broadcom SAS

Answer: A,B

Explanation:

QUESTION NO: 262

The Power and Suspend buttons for a virtual machine can be configured from the Options tab of

the virtual machine. What are the two default actions that are configured for these buttons?
(Choose two.)

- A. The Suspend button suspends the VM though the guest OS.
- B. The Power button does a graceful shutdown.
- C. The Power button does a hard shutdown.
- D. The Suspend button suspends the VM though ESXi.

Answer: B,D

Reference: http://pubs.vmware.com/vsphere-50/index.jsp?topic=%2Fcom.vmware.vsphere.vm_admin.doc_50%2FGUID-62689983-3320-464C-8CAE-AA8B528350D7.html

QUESTION NO: 263

Which network driver is not supported with virtual machine hardware version 8?

- A. vmxnet 3
- B. Enhanced vmxnet
- C. vmxnet 2
- D. E1000

Answer: C

Explanation:

QUESTION NO: 264

Which virtual disk types are supported on a network attached storage appliance using NFS with hardware acceleration disabled?

- A. Flat disk
- B. Raw Device Mappings
- C. Thick Provision Lazy Zeroed
- D. Thin Provision

Answer: D

Explanation:

QUESTION NO: 265

A database administrator has requested a disk for a virtual machine that will run an I/O intensive database application on an ESXi 5.x host. Which two disk types will best fit the needs of the application? (Choose two.)

- A. Raw Device Mapped Disk
- B. Thin Provisioned Disk
- C. Thick Provision Lazy Zeroed Disk
- D. Thick Provision Eager Zeroed Disk

Answer: A,D

Explanation: http://www.vmware.com/pdf/Perf_Best_Practices_vSphere5.0.pdf page 31, clearly states that best performance is achieved using eager zeroed provisioned disks, even when VAAI is available

QUESTION NO: 266

A database administrator has requested that a virtual disk attached to a virtual machine running an I/O intensive database application be fully provisioned. The virtual disk was initially thin provisioned. Which two methods would accomplish this task? (Choose two.)

- A. Use Storage vMotion and change the disk type to Flat.
- B. Use the Inflate option in the Datastore Properties.
- C. Use Storage vMotion and change the disk type to Thick Provisioned Lazy Zeroed.
- D. Use Storage vMotion and change the disk type to Thick Provisioned Eager Zeroed.

Answer: B,D

Explanation:

QUESTION NO: 267

Which two configuration settings can be modified when using the Typical option in the Create New Virtual Machine wizard? (Choose two.)

- A. Network Adapter type
- B. Datastore on which to place the virtual machine disks
- C. Number of Virtual CPUs
- D. Guest Operating System

Answer: B,D

Explanation:

Convert a Virtual Disk from Thin to Thick

If you created a virtual disk in the thin provision format, you can convert it to the thick provision format.

The thin provisioned disk starts small and at first, uses just as much storage space as it needs for its initial operations. After having been converted, the virtual disk grows to its full capacity and occupies the entire datastore space provisioned to it during the disk's creation.

Procedure

- 1 Select the virtual machine in the inventory.
- 2 Click the **Summary** tab and, under **Resources**, double-click the datastore for the virtual machine to open the Datastore Browser dialog box.
- 3 Click the virtual machine folder to find the virtual disk file you want to convert. The file has the .vmdk extension.
- 4 Right-click the virtual disk file and select **Inflate**.

Migrate a Virtual Machine with Storage vMotion in the vSphere Client

Use migration with Storage vMotion to relocate a virtual machine's configuration file and virtual disks while the virtual machine is powered on.

You cannot change the virtual machine's execution host during a migration with Storage vMotion.

Procedure

- 1 Select the virtual machine that you want to migrate in the inventory.
- 2 Right-click on the virtual machine and select **Migrate** from the pop-up menu.
- 3 Select **Change datastore** and click **Next**.
- 4 Select a disk format.

Option	Description
Same as Source	Use the format of the original virtual disk. If you select this option for an RDM disk in physical compatibility mode, only the mapping file is migrated. If you select this option for an RDM disk in virtual compatibility mode, the RDM is converted to a virtual disk.
Thin provisioned	Use the thin format to save storage space. The thin virtual disk uses just as much storage space as it needs for its initial operations. When the virtual disk requires more space, it can grow in size up to its maximum allocated capacity. This option is not available for RDMs in physical compatibility mode. If you select this option for a virtual compatibility mode RDM, the RDM is converted to a thin virtual disk. RDMs converted to virtual disks cannot be converted back to RDMs.
Thick	Allocate a fixed amount of hard disk space to the virtual disk. The virtual disk in the thick format does not change its size and from the beginning occupies the entire datastore space provisioned to it. This option is not available for RDMs in physical compatibility mode. If you select this option for a virtual compatibility mode RDM, the RDM is converted to a virtual disk. RDMs converted to virtual disks cannot be converted back to RDMs.

QUESTION NO: 268

A virtual machine is using a Fibre Channel attached RDM LUN. Which three use cases would necessitate a RDM? (Choose three.)

- A. VMware snapshots
- B. NPIV
- C. Physical server-to-virtual machine clustering
- D. Distributed file locking
- E. SAN management agents

Answer: B,C,E

Explanation:

QUESTION NO: 269

What are two benefits of physical compatibility mode for RDMs, as compared to virtual compatibility mode? (Choose two.)

- A. Allows the use of SAN-aware applications
- B. Allows for cloning
- C. Allows the VM to access SAN hardware directly
- D. Allows for template creation of the related virtual machine

Answer: A,C

Explanation:

QUESTION NO: 270

What is the recommended maximum memory value that is displayed when configuring a virtual machine based upon?

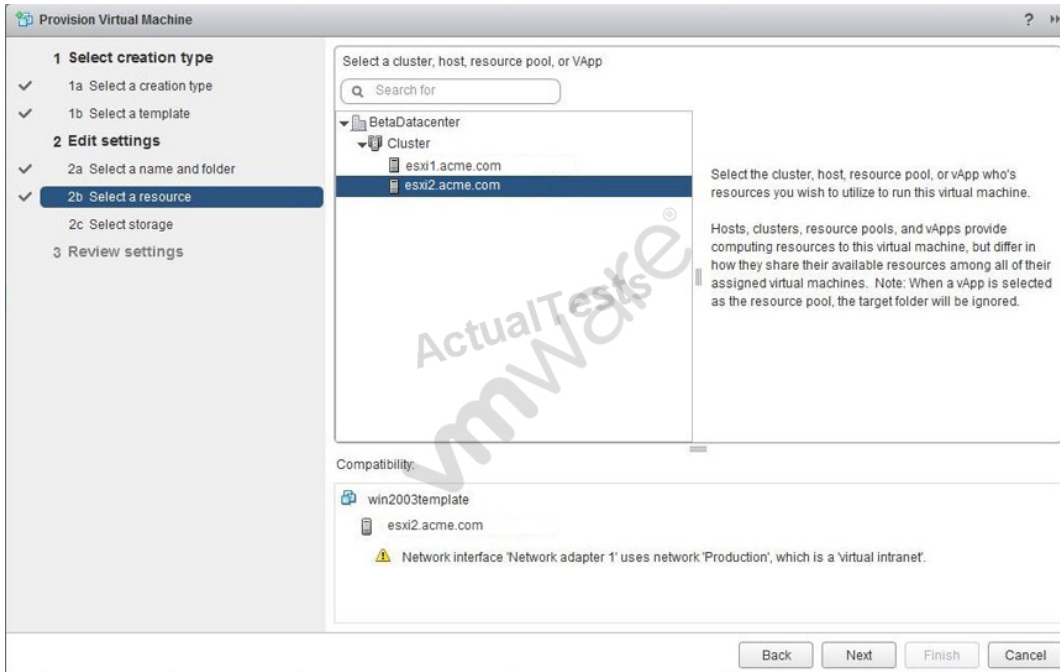
- A. The amount of memory in the ESXi host
- B. The threshold needed for the ESXi host to satisfy a reservation value
- C. The maximum value the guest operating system supports
- D. The maximum recommended by the OS manufacturer.

Answer: A

Explanation:

QUESTION NO: 271

Click the Exhibit button.



ACME Logging Inc. has been using the vSphere Web Client to deploy templates to a five-node vSphere 5.x cluster. After deploying a new template, the resulting virtual machine is not able to connect to the Development network to which it was assigned. When deploying another template, the message in the exhibit is shown.

Based on this information, what is the likely problem?

- A. The interface on esxi2 that is assigned to the virtual switch is down.
- B. The interface on esxi2 that is assigned to the virtual switch is configured incorrectly.
- C. The Production virtual switch is internal only.
- D. The Production virtual switch is a vDS.

Answer: C

Explanation:

QUESTION NO: 272

What reasons would prevent an administrator from deploying a virtual machine from a template? (Choose two.)

- A. The template is missing the .vmx configuration file.

- B. The vSphere Client is connected to an ESXi host.
- C. The template is listed as Orphaned.
- D. The administrator is using the vSphere Web Client.

Answer: B,C

Explanation:

QUESTION NO: 273

Why is converting a virtual machine to a template significantly faster than creating a clone of the virtual machine?

- A. Making a clone creates a linked-mode virtual disk.
- B. Making a clone creates a full copy of the VMDK file.
- C. Making a clone only creates a copy of the .vmx file.
- D. The template conversion has low priority on the system CPU.

Answer: B

Explanation:

QUESTION NO: 274

When memory is overcommitted, which two values can an administrator vary to increase the amount of physical memory granted to a given virtual machine? (Choose two.)

- A. Idle Memory Tax
- B. Shares
- C. VMMEMCTL
- D. Memory Reservation

Answer: B,D

Explanation:

QUESTION NO: 275

In the vSphere Client, the Resource Allocation tab for virtual machines displays host memory and guest memory. Which two statements best describe these terms? (Choose two.)

- A. Guest memory is the amount of physical memory that has been allocated to a virtual machine.
- B. Host memory is the amount of physical memory that has been allocated to a virtual machine.
- C. Guest memory is the memory usage of a virtual machine.
- D. Host memory includes VM overhead..

Answer: B,C

Explanation:

QUESTION NO: 276

An administrator wants to reduce the amount of memory overhead required by a virtual machine.

What two options below could be used to accomplish that task? (Choose two.)

- A. Reduce the amount of memory configured for the VM.
- B. Reduce the memory reservation for the VM.
- C. Reduce the memory shares for the VM.
- D. Reduce the number of vCPUs VM.

Answer: A,D

Explanation:

QUESTION NO: 277

An administrator has configured a virtual machine using the Emulate IDE mode for the DVD drive. Using the vSphere Client from a remote PC, an administrator wants to connect to a virtual machine and burn a DVD, but is getting error messages in the disk burning application.

What must the administrator do to fix this issue?

- A. The administrator must use the host DVD drive.
- B. A DVD cannot be burned from within a virtual machine.
- C. The administrator must change the DVD mode to Passthrough IDE.
- D. The administrator must click the Writer checkbox in the DVD settings.

Answer: C

Explanation:

QUESTION NO: 278

What two statements regarding the VSWP file are true? (Choose two.)

- A. The VSWP file is equal to the memory allocation.
- B. The VSWP file size is equal to the memory reservation.
- C. The VSWP file size is equal to the difference between the memory assigned and reservation.
- D. No VSWP file is created if reserved memory to the same value as allocated memory.

Answer: C,D

Explanation:

QUESTION NO: 279

What type of failure is VMware Fault Tolerance designed to protect against?

- A. A failure on the ESXi host running the primary virtual machine
- B. A failure on an application within the primary virtual machine
- C. Loss of storage connectivity to the primary virtual machine
- D. An operating system failure on the primary virtual machine

Answer: A

Explanation:

QUESTION NO: 280

An administrator has discovered a failure that has affected network connectivity on the management network of a vSphere HA cluster. As a result, half of the hosts in the cluster are able to communicate with each other but not the other half. The cluster was configured with default settings.

What happens as a result of the failure?

- A. The VMs will be powered off on slave hosts in the cluster.
- B. All VMs and hosts in the cluster are unaffected.
- C. The VMs are unaffected, a second master will be elected.
- D. The VMs will be powered down on all hosts in the cluster.

Answer: C

Explanation:

QUESTION NO: 281

Under which two conditions is a master elected by vSphere HA? (Choose two.)

- A. When any cluster is created
- B. When a host is placed into maintenance mode
- C. When the datastore configuration changes
- D. When "Reconfigure for vSphere HA" is executed

Answer: B,D

Explanation:

QUESTION NO: 282

A virtual machine failure occurs in a vSphere HA cluster, but the VM is not restarted. No error messages are given. Which two conditions would explain this behavior? (Choose two.)

- A. Monitoring sensitivity was set to Low.
- B. Application Monitoring Only was selected.
- C. The virtual machine has failed three times.
- D. The HA cluster was set up with all defaults.

Answer: C,D

Explanation:

QUESTION NO: 283

An administrator is configuring a stretched HA cluster. The administrator wishes to restrict the failover of VMs to certain hosts within a given site.

Which additional vSphere feature satisfies this requirement?

- A. vSphere Distributed Switch
- B. Distributed Resource Scheduler
- C. Datastore Clusters
- D. Host Folders

Answer: B

Explanation:

QUESTION NO: 284

What are three use cases for vSphere Fault Tolerance? (Choose three.)

- A. Provide guaranteed up-time for a RDM enabled virtual machine
- B. Provide efficient scheduled reliability for a payroll virtual machine
- C. Provide guaranteed reliability for a development virtual machine with scheduled snapshots
- D. Provide guaranteed reliability for a legacy Windows NT virtual machine
- E. Ensure up-time for a Linux virtual machine without making any changes to the OS

Answer: B,D,E

Explanation:

QUESTION NO: 285

Which two vSphere features can be used with virtual machines that are enabled for VMware Fault Tolerance? (Choose two.)

- A. EVC
- B. Storage vMotion
- C. RDMs in virtual compatibility mode
- D. VMware Virtual SMP

Answer: A,C

Explanation:

QUESTION NO: 286

ACME Anvil Incorporated has several departments which each have unique resource requirements in their environment:

1. The Manufacturing department has ten production virtual machines.
2. The Development department has two test/dev virtual machines.

3. The Manufacturing virtual machines have only CPU reservations.
4. No Development virtual machine should be able to use more resources than any Manufacturing virtual machine requests.
5. Manufacturing department virtual machines must always be able to power on.

Resource Pools will be used to address these requirements.

When creating the "Manufacturing" and "Development" pools, which settings should be part of the configuration to meet the stated requirements? (Choose two.)

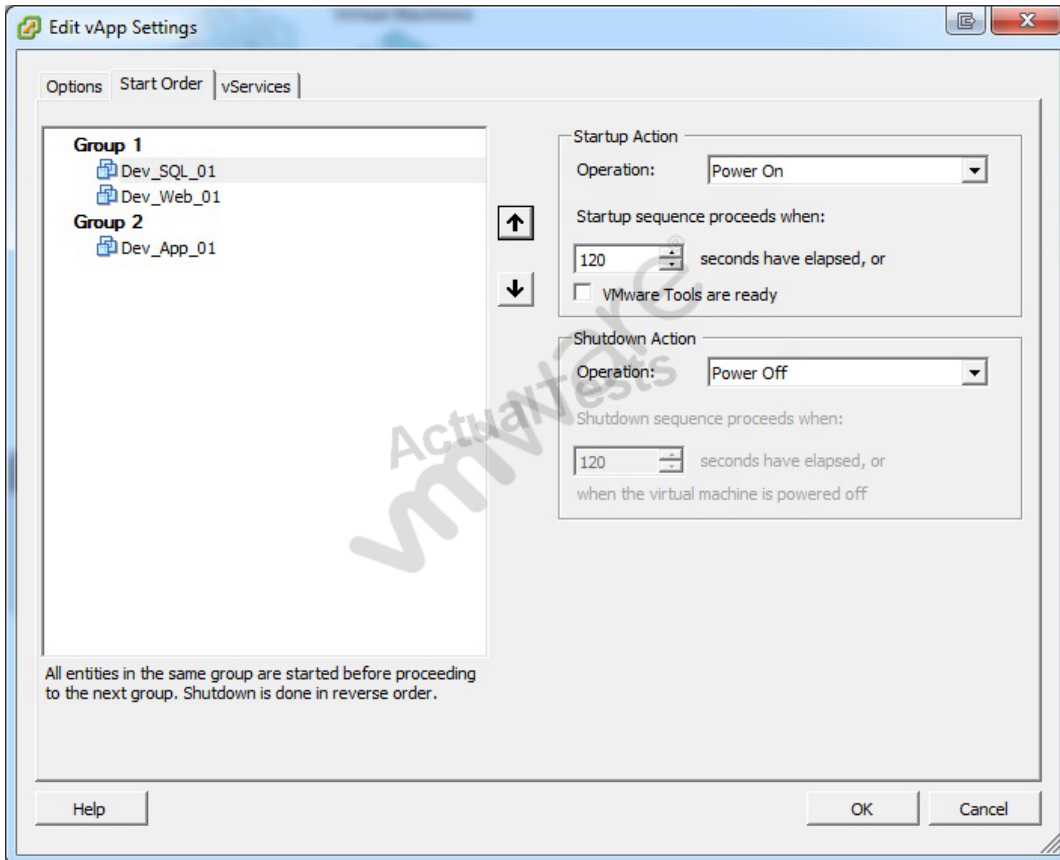
- A. Enable Expandable Reservation on Memory Resources on the Manufacturing pool
- B. Set a reservation for CPU Resources on the Manufacturing resource pool
- C. Create a required Group Rule to ensure Development virtual machines always run on the Development host
- D. Ensure the shares set on the Manufacturing pool are at least five times the shares set on the Development pool

Answer: B,D

Explanation:

QUESTION NO: 287

Click the Exhibit button.



An administrator is creating a vApp for a multi-tiered web application. The vApp has been configured as shown in the exhibit. Testing of the vApp indicates that attempts to communicate with the web server on Dev_Web_01 fail. The developer wants to be sure the database server OS is completely started before the other servers power on. The developer also wants to minimize recovery time.

What changes to the vApp configuration will correct the issues?

- A. Move the Dev_Web_01 virtual machine to Group 3 and increase the time value
- B. Move the Dev_App_01 virtual machine to Group 1 and increase the time value
- C. Move the Dev_Web_01 virtual machine to Group 3, decrease the time value and check VMware Tools are ready
- D. Move the Dev_Web_01 virtual machine to Group 3, increase the time value and check VMware Tools are ready

Answer: D

Explanation:

QUESTION NO: 288

Click the Exhibit button.

The screenshot displays the vSphere vCenter interface. On the left, the 'vSphere5Cluster' summary shows CPU and Memory statistics. The 'Production Pool' is highlighted in the table below.

Name	Reservation - MHz	Limit - MHz	Shares	Shares Value	% Shares	Worst Case
Production Pool	0	500	Normal	4000	25	
Development Pool	1000	Unlimited	Normal	4000	25	
Testing Pool	2000	Unlimited	Normal	4000	25	

The 'Edit Settings' dialog for the 'Production Pool' is open, showing CPU and Memory Resources. The CPU Resources section shows Shares set to Normal (4000), Reservation at 0 MHz, and Limit at 500 MHz. The Memory Resources section shows Shares set to Normal (163840), Reservation at 0 MB, and Limit at 14345 MB. The 'Unlimited' checkbox is checked for both sections.

The 'PROD-SQL-01 - Virtual Machine Properties' dialog is also open, showing Resource Allocation for the virtual machine. The CPU Resources section shows Shares set to Normal (3000), Reservation at 0 MHz, and Limit at 11469 MHz. The 'Unlimited' checkbox is checked.

Several virtual machines residing in the Production pool are exhibiting poor performance, and a critical virtual machine in the pool appears hung. What step can be taken to increase the performance of the critical virtual machine?

- A. Increase the CPU limit on the critical virtual machine.
- B. Increase the CPU shares on the critical virtual machine.
- C. Increase the CPU reservations on the resource pool.
- D. Increase the CPU limit on the resource pool.

Answer: D

Explanation:

QUESTION NO: 289

The VMware vCenter Server Appliance has been deployed using default settings.

What user name and password are used to log in to the administration interface to configure the appliance?

- A. The initial user name and password must be supplied on the first login attempt.
- B. The initial user name and password must be supplied during deployment.
- C. The initial user name is root and the password is blank.
- D. The initial user name is root and the password is vmware.

Answer: D

Explanation:

QUESTION NO: 290

How can you verify vStorage APIs for Array Integration (VAAI) is enabled?

- A. "VAAI" listed on the Hard Disk properties page for any VMDK stored on a compliant array
- B. "Hardware Acceleration" listed on the Hard Disk properties page for any VMDK stored on a compliant array
- C. "VAAI" column for any datastore created on a compliant array
- D. "Hardware Acceleration" column for any datastore created on a compliant array

Answer: D

Explanation: If you go to Host > Configuration > Storage, you can see the Hardware Acceleration Status in the panel on the right side.

For each storage device and datastore, the vSphere Client displays the hardware acceleration support status in the Hardware Acceleration column of the Devices view and the Datastores view.

Reference:

http://kb.vmware.com/selfservice/microsites/search.do?language=en_US&cmd=displayKC&externalId=1021976

QUESTION NO: 291

What are two consequences of deleting an VMFS datastore from an ESXi host? (Choose two.)

- A. The datastore is inaccessible from all connected ESX/ESXi hosts.
- B. The datastore and all virtual machines are removed from the storage device.
- C. The datastore and all virtual machines remain on the storage device.
- D. The datastore is only removed from that specific ESX/ESXi host.

Answer: A,B

Explanation:

QUESTION NO: 292

How is the page file for a Windows guest operating system or the swap partition for a Linux guest

operating system created?

- A. By the ESXi host
- B. By the guest operating system
- C. By the vCenter server
- D. By the vCenter cluster

Answer: B

Explanation:

QUESTION NO: 293

When deploying an OVF template, what file format will the resulting virtual disk be?

- A. OVF
- B. VMDK
- C. VMX
- D. VSWP

Answer: B

Explanation:

QUESTION NO: 294

What is an accurate statement about vSphere Fault Tolerant secondary virtual machines?

- A. Cannot be stored on an NFS datastore
- B. Created on the same host as the primary
- C. Can prevent other virtual machines from powering up.
- D. Can be used for load balancing

Answer: C

Explanation:

QUESTION NO: 295

An administrator finds that an ESXi host cannot be managed by vCenter Server.

Which logs can be reviewed using the DCUI? (Choose three.)

- A. Syslog
- B. Config log
- C. Virtual Center Agent
- D. ESXi shell logs
- E. VMware HA log

Answer: A,B,C

Explanation:

QUESTION NO: 296

Which two solutions require Raw Device Mapping using virtual compatibility mode? (Choose two.)

- A. Array-based snapshots
- B. virtual machine snapshots
- C. Move the data using Storage vMotion
- D. SAN management agents

Answer: B,C

Explanation:

QUESTION NO: 297

Which scenario requires an additional database server when adding vSphere Update Manager 5 to an environment?

- A. vCenter Appliance with an external Oracle database
- B. vCenter Application with the default database
- C. vCenter Application with an external SQL 2008 Enterprise database
- D. vCenter Appliance with an external DB2 database

Answer: D

Explanation:

QUESTION NO: 298

Which three statements regarding Network I/O Control (NetIOC) are accurate? (Choose three.)

- A. Isolation allows domination by any one traffic flow.
- B. Limits enforce maximum throughput control on a virtual machine.
- C. Enforce traffic bandwidth limit on the overall vDS set of dvUplinks.
- D. Load based teaming efficiently uses a vDS set of dvUplinks for network capacity.
- E. Relative shares fairly allocates available bandwidth among multiple flows.

Answer: C,D,E

Explanation:

QUESTION NO: 299

Which are three of the steps recalled patches automatically go through in vSphere Update Manager? (Choose three.)

- A. Delete recalled patch binary from repository
- B. Remediate any host with recalled patches
- C. Generate a notification in the notification tab
- D. Place hosts with recalled patches in maintenance mode
- E. Flag recalled patch in database

Answer: A,C,E

Explanation:

QUESTION NO: 300

A DRS cluster has been created with two ESXi hosts. One host in the cluster is running at 98 percent CPU utilization. The other host is running at 52 percent utilization. Upon analysis, it appears that none of the virtual machines are being migrated from the CPU-constrained host, and no recommendations are being generated.

What are the two most likely causes of the problem? (Choose two.)

- A. The VMkernel port is assigned an incorrect IP address.
- B. VMotion is not enabled on the VMkernel port.
- C. DRS migration Threshold is not set high enough.
- D. VMware DRS is not set to Fully Automated.

Answer: A,B

Explanation:

QUESTION NO: 301

An administrator is setting up vMotion in a vSphere environment. A migration is run to test the configuration but fails.

What could the administrator do to resolve the issue?

- A. Ensure the VMkernel portgroup is configured for Management Traffic.
- B. Enable VMkernel portgroup for the vSphere cluster.
- C. Use a vDS instead of a standard switch.
- D. Ensure the VMotion enabled adapters are configured for the same subnet.

Answer: D

Explanation:

QUESTION NO: 302

Which resource management technique can be used to relieve a network bottleneck caused by a virtual machine with occasional high outbound network activity?

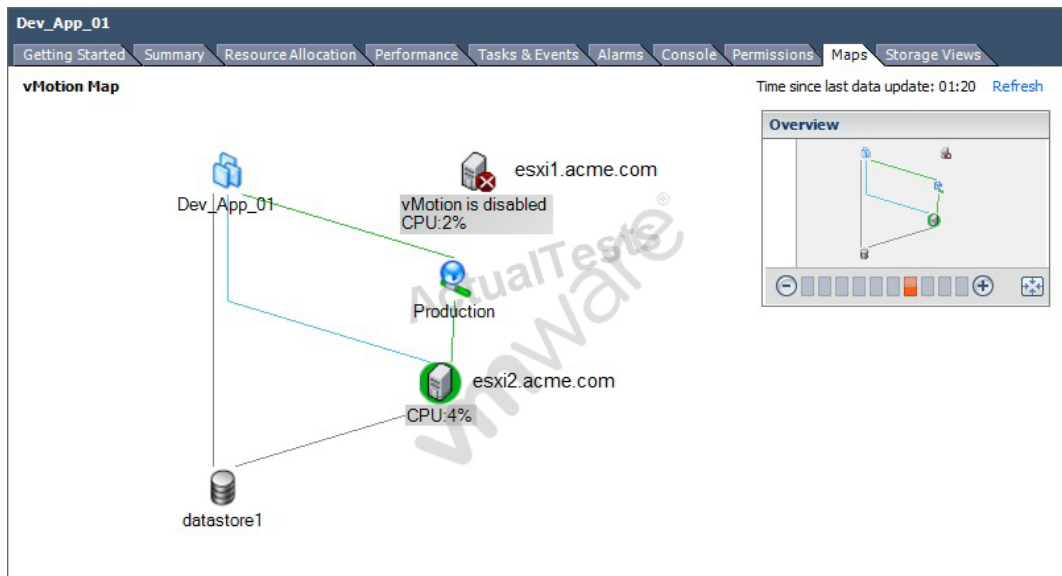
- A. Convert the switch from a vNetwork Standard Switch to a vNetwork Distributed Switch.
- B. Create a new portgroup for the virtual machine and enable traffic shaping.
- C. Apply traffic shaping to the virtual machine with high activity.
- D. Apply traffic shaping to the other virtual machines in the same portgroup.

Answer: B

Explanation:

QUESTION NO: 303

-- Exhibit --



-- Exhibit --

Click the Exhibit button.

An administrator is configuring vMotion in their environment. As part of the implementation, an administrator is examining resource mapping for virtual machines.

What is a likely cause of the error shown in the exhibit?

- A. vMotion has not been enabled on a VMkernel portgroup.
- B. The administrator has not created a Management network.
- C. vMotion has not been enabled on the Production portgroup.
- D. vMotion has been disabled because there are no other hosts in the cluster with vMotion enabled.

Answer: A

Explanation:

QUESTION NO: 304

Which two methods can be used to improve the vMotion migration speed of a virtual machine? (Choose two.)

- A. Enable High priority on the virtual machine before starting vMotion.

- B. Lower the memory reservation for the virtual machine.
- C. Ensure the cluster has the default Swapfile Policy set.
- D. Select High priority during the migration wizard.

Answer: C,D

Explanation:

QUESTION NO: 305

An administrator is upgrading an ESX 3.5 host to ESXi 5.x with an intermediate upgrade to ESX 4.0 using Update Manager. The host has a single Intel Xeon processor, 4GB of RAM, and a VMFS datastore on a private, SAN-attached LUN.

What might cause the upgrade to be unsuccessful?

- A. Update Manager does not support upgrading from ESX.
- B. The host has one processor.
- C. The host has 4GB RAM.
- D. ESX 3.5 is not supported by Update Manager.

Answer: D

Explanation:

QUESTION NO: 306

An administrator decides to use Data Recovery to back up some key virtual machines. What is the process to install Data Recovery?

- A. Download the vmdk and vmx files from VMware.com and copy to a datastore. Right-click the vmx file and select Add to Inventory.
- B. Download the .exe from VMware.com and run from the vSphere Client machine.
- C. Use the vCenter Installer from the original vCenter media and select "vSphere Data Recovery".
- D. Download OVF from VMware.com onto the vSphere Client machine and use Deploy OVF Template.

Answer: D

Explanation:

QUESTION NO: 307

In a vSphere HA cluster what is the maximum number of point-to-point communication links to the slaves each master maintains?

- A. 32
- B. 64
- C. 512
- D. 1024

Answer: A

Explanation:

QUESTION NO: 308

Which are three use cases for vSphere Fault Tolerance? (Choose three.)

- A. Provide guaranteed reliability for a legacy Windows NT virtual machine
- B. Provide efficient scheduled reliability for a payroll virtual machine
- C. Guarantee up-time for a virtual machine - VMFILE01 with a 4GB RDM
- D. Ensure up-time for a Linux virtual machine without making any changes to the OS
- E. Provide guaranteed reliability for a development virtual machine with scheduled snapshots

Answer: A,B,D

Explanation:

QUESTION NO: 309

Which two statements are true about VLANs and portgroups defined on a vSphere Standard Switch? (Choose two.)

- A. A VLAN can be accessed by the entire virtual switch or individual portgroups.
- B. VLANs can be configured only on individual portgroups.
- C. Multiple portgroups are restricted from accessing the same VLAN.
- D. Multiple VLANs can be accessed by virtual machines connected to one portgroup.

Answer: A,D

Explanation:

QUESTION NO: 310

What is the default VFAT scratch partition size for ESXi 5.x?

- A. 4GB
- B. 600MB
- C. 544MB
- D. None

Answer: A

Explanation:

QUESTION NO: 311

The VMware vCenter Server Appliance offers many features of the Windows application version. Which of the following features is only available on the Windows application version of vCenter?

- A. Host Profiles
- B. Template and clone customization
- C. Active Directory authentication
- D. Linked Mode

Answer: D

Explanation:

QUESTION NO: 312

A vSphere Standard Switch has been configured for IP-based load balancing using two uplinks. A new uplink is added to the vswitch. What additional configuration is required by default?

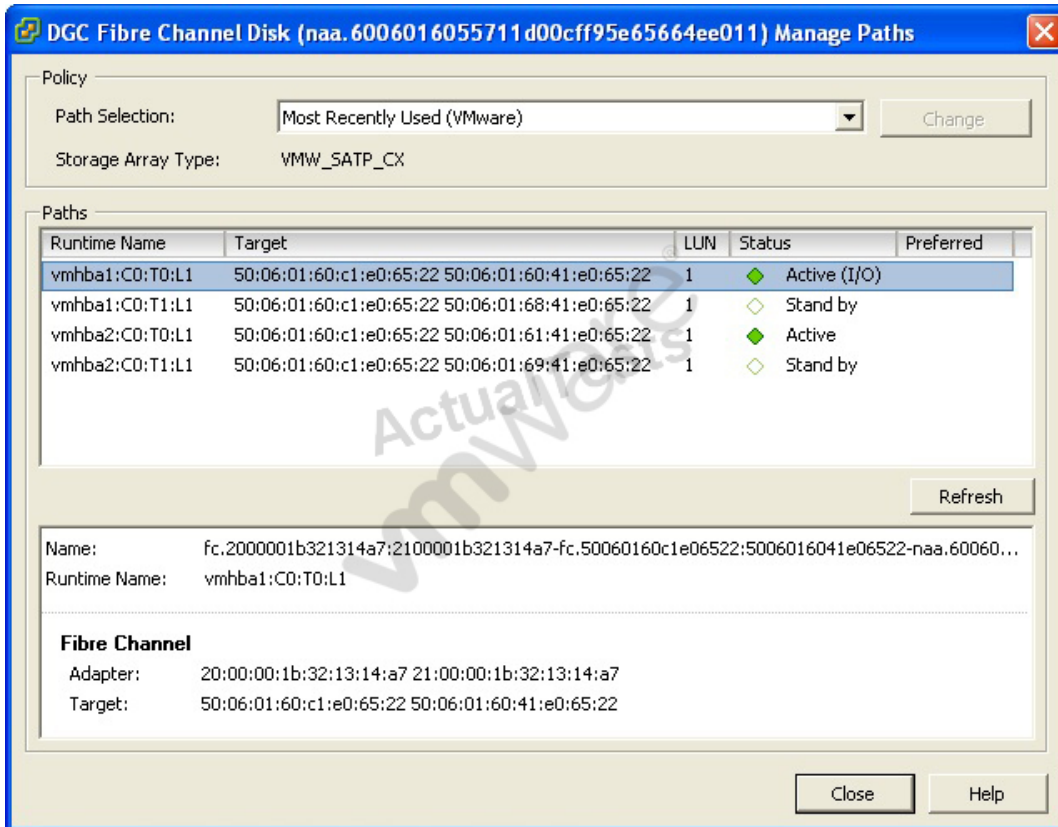
- A. The uplink is placed in standby mode until it is added to the active NIC team.
- B. The uplink is considered active, but it will not participate in the active NIC team until assigned to a port group.
- C. The physical switch must add the new port to the existing 802.3ad group.
- D. The uplink is automatically marked as unused when it is added to IP-based NIC team.

Answer: C

Explanation:

QUESTION NO: 313

Click the Exhibit button.



Based on the exhibit, what is the reason that two of the paths are marked as standby?

- A. The other two paths were set to active.
- B. That is a characteristic of the storage array used.
- C. The active paths were set to preferred.
- D. The storage adapters need to be rescanned before those paths will be set to active.

Answer: B